



LEEDS  
BECKETT  
UNIVERSITY

---

Citation:

Stott, CR and Warren, S (2018) Project Office Volume 3. Project Report. Leeds Beckett University.

Link to Leeds Beckett Repository record:

<https://eprints.leedsbeckett.ac.uk/id/eprint/5382/>

Document Version:

Monograph (Published Version)

---

Creative Commons: Attribution 4.0

The aim of the Leeds Beckett Repository is to provide open access to our research, as required by funder policies and permitted by publishers and copyright law.

The Leeds Beckett repository holds a wide range of publications, each of which has been checked for copyright and the relevant embargo period has been applied by the Research Services team.

We operate on a standard take-down policy. If you are the author or publisher of an output and you would like it removed from the repository, please [contact us](#) and we will investigate on a case-by-case basis.

Each thesis in the repository has been cleared where necessary by the author for third party copyright. If you would like a thesis to be removed from the repository or believe there is an issue with copyright, please contact us on [openaccess@leedsbeckett.ac.uk](mailto:openaccess@leedsbeckett.ac.uk) and we will investigate on a case-by-case basis.



Project  
Office

Vo1 3

Project Office is a design and research collaboration of staff and students. It is an architecture consultancy making ethical, social and resilient architecture. We work with like-minded communities, organisations and individuals.



PROJECT  
OFFICE

## / ABOUT US

Project Office has undertaken more than 25 projects, most within the Leeds City region. It offers a full architectural service that includes feasibility studies, design guides and design advocacy, research, fabrication and construction. Students and staff work together to produce design and research for organisations such as charities and community groups who are unable to afford standard architectural consultancy. Student participants are always paid for their time, either through the University currency of 'credits' awarded towards their degree, or financially working directly for Project Office.

Project Office's approach equips students with a fantastic learning experience relating to real world complexities through the vehicle of live projects, whilst simultaneously supporting the needs of socially conscious organisations.

Project Office is co-directed by;  
Craig Stott MEng, BArch, MA, ARB, FHEA  
and  
Simon Warren BA(Hons), Dip(Arch), ARB, RIBA, SFHEA



Richmond Hill Parkour Playground Activity Day  
Photo by Graham Davey





STaLRC Alumni Competition Presentation Event  
Photo by Graham Davy

## / PEDAGOGIC BRIDGE

Designers are well placed to challenge the contemporary paradigm of neoliberalism through their practice. It follows that design students should be exposed to these realities during their formal education. This is one of the reasons Project Office exists. For architectural education to remain relevant, students' incredible talent and energy must be harnessed to critically address the societal, political and environmental issues facing humankind.

It follows that, if designers are able to decide to act as agents of change, then educational institutions can also choose an ethical and social position as a starting point for educational projects. Such 'Anchor Institutions'<sup>1</sup> can "promote economic, social and cultural regeneration" by embedding themselves within their local community and working with regional partners to bridge the pedagogic gap between practice and academia. Thus the role of universities becomes one intent on advancing society for the greater good through the productive output of student endeavour, in addition to the classic creation and dispersion of knowledge.

<sup>1</sup> Social Mobility Advisory Group (2016) *Working In Partnership; Enabling Social Mobility In Higher Education*. London: Universities UK, 24.

Edited excerpt from; Stott & Warren (2018) 'The Pedagogic Value of Architectural Co-Design' in Ferdous & Bell (eds) *All-Inclusive Engagement in Architecture*. NY: Routledge.

“Over the last 8 years a partnership with Project Office has been a positive force for change and investment in our community. Working with committed staff and students we have created and delivered a large number of successful projects including small scale work – local landscaping ideas and initiatives, to the building of a new £750K community building. The effect of this work on the community and the community association has been to help transform the area, raise local people’s aspirations and create a safer environment. The partnership between Project Office and NWCA continues to flourish.”

“The benefits to New Wortley are clear, we have well developed plans that are truly community led and influenced, and access to a resource that allows us to dream big and deliver a vision of New Wortley as a successful thriving neighbourhood. This way of working really fits with our strengths based model – focusing on the assets and talents in the community.”

“The benefits to students is the chance to work on live projects that have a great chance to be delivered, learning about consultation with real people and understanding the challenges and opportunities.”

Bill Graham, Community Leader,  
New Wortley Community Association



# / NEW WORTLEY COMMUNITY CENTRE

Completed in May 2016, New Wortley Community Centre is the culmination of enthusiastic participation by local residents and volunteers with Leeds Beckett University. The process took over six years and involved 196 individuals including community members, professionals, and staff and students from Architecture, Landscape, Graphics, Cultural Studies, Product Design and Architectural Technology.

The outcomes are a result of an experimental co-design process where exposure to working professionally in multi-disciplinary environments equipped students with the necessary skillset for professional careers whilst simultaneously providing vital support for a third sector organisation.



Photo by Graham Davey









Photo by Will Phuc Ton

The original high street has been deconstructed since the slum clearances of the 1960s. New Wortley no longer has a centre and lacks urban cohesiveness. The new centre is a small civic building that recreates an urban situation by fronting on to New Wortley's main thoroughfare becoming a local landmark for the community and the start of re-establishing the high street building line.

Red brick and grey zinc remind people of the predominant material colours originally seen throughout the area. Large windows permit passers-by to see into the centre as a response to the invisibility of social life within the area.

The architectural concept, a 'work of many hands', underpins New Wortley Community Centre, where discrete elements have been the design responsibility of specific student participants. Project Office has managed and choreographed the work into a singular architectural statement.

The new building has proved a remarkable catalyst attracting a host of fresh users, volunteers and opportunities. Previously just 2 members of paid staff and 8 volunteers ran the organisation; today the centre has 21 members of paid staff and 53 volunteers. Consequently, NWCC now plays a pivotal role in the city's most disadvantaged community.







# New Wortley Comm

Mariam Aslam  
Rachel Berry Lauren Moriarty Will Page  
Delphine Boardman David Fuller Tobias Bridger Rob Hilton  
AbdulZ  
Alvin Bateson Callum Hairsine Krebs Sameerah Khalid Richard Allen Andrew Gaunt Anis  
Rosemar Da Costa Christopher Newbold Hannah Elliott Leo Braga Nicholas Curtis Alex D  
Matthew Pickersgill Amy Featherstone Kate Hopkins Maro Antonakou Adrian O'Ha  
Alex Bingley Chris Paraskos Sarah Harvey Nick Jones Peter Baldock  
Liam Pyman Yue Zheng Vahagn Mkrtchyan Freddie Garside Haroulla Geor  
Joe Morizzo Imran Zulfqar Gareth Roberts Nick Husband Asma Dau  
Owen Toms Stephen McCloy Anisah Parveen Tristan Cox Jujah S  
Stuart Norman John Murphy Stephanie Wilding Jack Hyslop  
James Ballard Jason Cheung Nathan Aston Rachael Brai  
Usman Ali Rachel Mackenzie Gerson Almei  
Harry Winfield Carla Zurrieta Andrew Du  
Kevin Wade Ray Bantug Anna R  
Adam Fulton Hamid Isl

Names of all 196 contributors are engraved on the entrance  
Photo by Will Phuc Ton

## / SEED AWARD WINNER

In 2017 Project Office won the Live Projects Network Category at the SEED (Social Economic Environmental Design) Awards for the process underpinning the New Wortley Community Centre.

The award was collected at the SFI2017 (Structures for Inclusion 2017) Conference at Portland State University, Oregon. Project Office was also invited to present the 'Story of New Wortley' at the conference.

Professor Peter Slee, Leeds Beckett University Vice Chancellor said: "Everyone here at Leeds Beckett University is proud of the pioneering work of our University's Project Office. Simon Warren and Craig Stott have led a talented team of students and staff in ground-breaking work. The New Wortley Community Centre is everything a building should be; functional, sustainable and beautiful. Their international award demonstrates very clearly the world class nature of the work undertaken at Leeds Beckett University."

“The New Wortley Community Centre project has empowered all actors involved, realising their shared vision in a meaningful and sustainable way. Project Office was key to this success, coordinating the energy and potential of both the community and Leeds Beckett University. We commend their evolution and implementation of such a coherent design strategy in a complex and fluid context.”





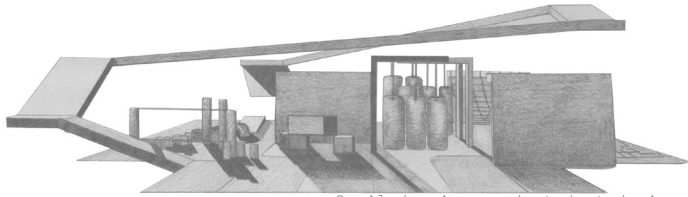
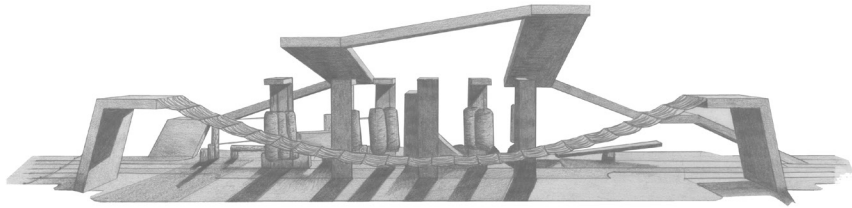
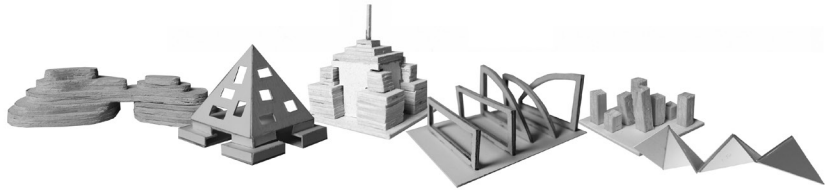
## /RICHMOND HILL PRIMARY SCHOOL PARKOUR PLAYGROUND

Richmond Hill Primary School, widely recognised as forward thinking, resides within one of Leeds' most disadvantaged areas. To further their Outdoor Learning Module the school sought to develop a parkour playground.

BA2 & 3 students tackled the design in groups, including planning an activity with school pupils determining requirements for their Parkour Playground. The completed work was exhibited at The Tetley Centre for Contemporary Art and Learning, attended by pupils, staff, students and the public.

The winning proposal, chosen for its clever way of achieving inclusive use was designed by students Tarran Coward-Willis, Alex Moriarty, Matthew Glegg, Daniel Peinado and Alex Rinder.





Pupil drawings and student design work



# Parkour Playground

Richmond Hill Primary School  
& Leeds Beckett University's  
Project Office



Exhibition of work at The Tetley  
Photo by Graham Davey





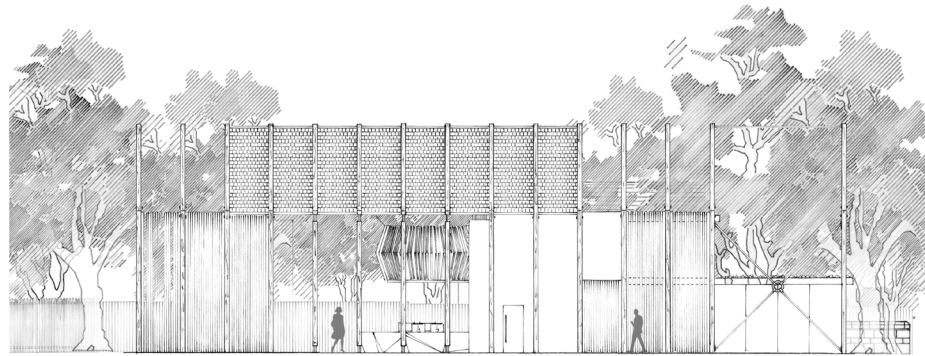


Richmond Hill Parkour Playground Activity Day  
Photo by Graham Davey



# / BRAMLEY HEALTH & WELLBEING CENTRE

Health and Wellbeing Centres allow users an opportunity to live longer, healthier lives that are full, active and independent through a more holistic response to patient care.



Manor Park GP Surgery in Bramley intend on providing a place where healthcare, social care and third sector colleagues can collaborate and innovate to provide improved methods of treatment outside the non clinical environment.

BA2 students were set the task of designing a building that met all Manor Park's needs whilst being flexible enough to host a range of activities and allow future development.

The design work will be used to support the client's fund raising.



An initial sketch scheme by BA2 student Louis Smith

# /'HAUS' - 30 CHAPEL STREET, BRADFORD

In the heart of Bradford's historic Little Germany, the SoCo Company is establishing a hub for innovation and enterprise for start up companies and individuals.



Social Hub Space



Co-working Space

The School of Architecture runs a week long work placement programme for undergraduate students called 'Speed Dating'. Many Leeds city region practices participate each year, including Project Office.

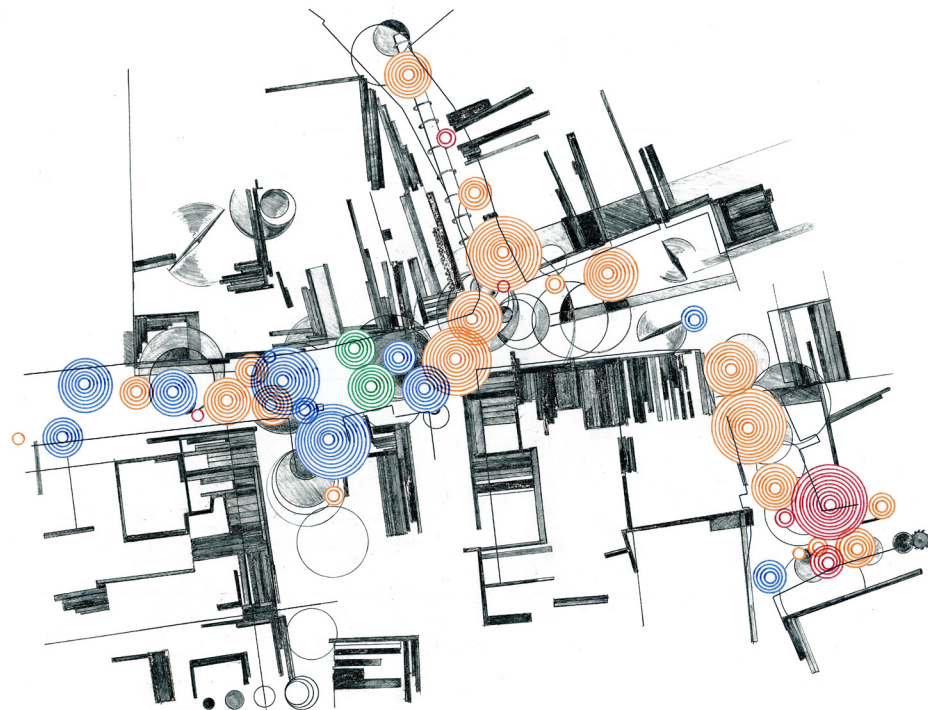
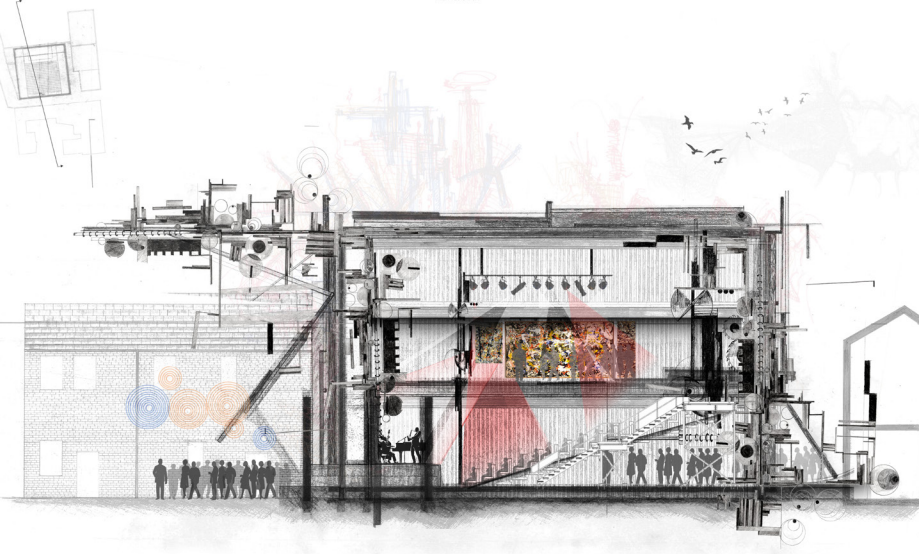
A group of BA2 & 3 students undertaking a Speed Dating work placement with Project Office devised an initial brief and concept design to aid SoCo's fundraising for the next stage of the project.

*"Just want to say how impressed we are with your designs, it far exceeded what we were expecting and you have presented us with a huge amount of work that we will be able to use, not to mention that we are seriously reconsidering the name of the project to use 'Haus'".*

Kamran Rashid, Director SoCo Company

# /OTLEY COURTHOUSE

Otley Courthouse is a community arts centre in a re-purposed nineteenth century magistrates court, run by volunteers.



A proposed urban strategy at Otley Courthouse by BA2 student Dominiq Oti

Currently the Courthouse's desired reach is limited by a lack of specialist facilities and a main auditorium of just 140 seats. BA2 students redesigned the town block in which the existing building sits to include a new 400-seat auditorium, exhibition gallery, and associated ancillary spaces. The ideas generated are now being discussed by the client with the local council.



# / CRESCENT ARTS SCARBOROUGH

Crescent Arts supports and promotes contemporary visual arts and artists in Scarborough offering exhibitions, studio space, professional development, workshops, film screenings and artists' talks.



Photo by Sarah Gharbi

Working closely with the client, BA2 students produced proposals for converting and extending a derelict sunbathing building, originally constructed in 1924, into the new home for Crescent Arts. In conjunction with Scarborough Council this work is being developed into a feasibility study with grant funding by the Architectural Heritage Fund.



“Project Office understands the education and nurturing of young talent, and does a good job to promote it by actively demonstrating the value of architecture.”

Alumnus Steven McCloy

“Architecture, indeed, everything that is built, cannot help playing some kind of role in the lives of the people who use it.”

Herman Hertzberger

## / ALUMNI PEDAGOGY

The institution's association with its students is almost severed after graduation. By extending pedagogy, through a competition, Project Office explores new possibilities between the School of Architecture and its former students, linking academia and practice.

Competitions provide a valuable strategy within an educational setting as they expose the entrant to the canon of advancing architectural knowledge and empower them with the ability to challenge the establishment. Consequently the architectural competition is a relevant tool to push the boundaries of architectural education, here of live project education, as it confronts the contradictions of advancing knowledge, experimentation and production of real work for a client.

As alumni competitions are framed in an educational setting, the learning outcomes of participants are of equal importance to the quality of entries. This methodology ensures continued pedagogical value in the transition between formal education and the profession. Recent alumni are vital and unencumbered fledgling professionals and through entering alumni competitions are provided a space to fly.

Edited excerpt from; Stott & Warren (2016) 'Experimenting with Alumni Pedagogy' Conference Paper at ICC 2016 *The Competition Mesh*. Leeds Beckett University.



Alumnus Steven McCloy Presenting at STaLRC Competition Event  
Photo by Graham Davey



PROJECT  
OFFICE

@LEEDS BECKETT UNIVERSITY  
Cra...ott // Simon Warren



## /RESEARCH

Project Office's research explores the underpinning pedagogy and social value impact of architectural live projects.

In addition to the two PhD studies Project Office supports, numerous research outputs are produced, a selection of which are listed below:

Stott & Warren (2018) 'The Pedagogic Value of Architectural Co-Design' Book Chapter in Ferdous & Bell (eds) *A77- Inclusive Engagement in Architecture*. New York: Routledge.

Stott & Warren (2018) 'Competitions and Educational Structures' Book Chapter in Theodorou and Katsakou (eds), *The Competition Grid: Experimenting With and Within Architecture Competitions*. London: RIBA Publications.

Stott & Warren (2017) 'The Making of a Liveable Community at New Wortley' Conference Paper at *AMPS 2017; Cities, Communities and Homes: Is the Urban Future Liveable?* University of Derby.

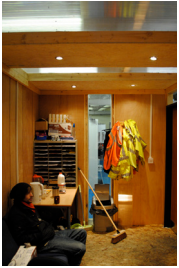
Stott & Warren (2017) 'Advocating a Co-Design Methodology Across Academy and Community' Conference Paper at *AAE 2017; Architecture Connects*. Oxford Brookes University.

Stott & Warren (2017) 'The Story of New Wortley' Invited Presentation at *SFI17 Structures for Inclusion Conference*. Portland State University, Oregon.

Stott & Warren (2016) 'Experimenting with Alumni Pedagogy' Conference Paper at *ICC 2016 The Competition Mesh*. Leeds Beckett University.

Stott & Warren (2016) 'Emergent Community Governance; a new model of socially sustainable transformation in New Wortley' Conference paper at *SEEDS 2017*. Leeds Beckett University.

# / PREVIOUS PROJECTS



Fareshare Office  
2010



Arc Light  
Orwin House  
2010 to 2011



House of Hope  
Haiti  
2011



Old Chapel  
Studios  
2011



Basement Arts  
Leeds  
2012



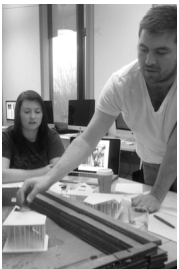
Hunslet Urban  
Framework  
2012 to 2013



Garden Gate  
Hunslet  
2012 to 2013



Morley Newlands  
Primary School  
2013 to 2014



The Orangery  
Beam  
2013 to 2014



Bardsey Scout  
Hut  
2014



Leeds Film  
School  
2014



Nunburnholme  
Heritage Centre  
2015

“There are a million ideas that can change the world, but if you don’t build it, it doesn’t exist.”

Cameron Sinclair



# / WHO WE ARE

## SIMON WARREN

Project Office Co-Director

I am interested in the role of the architect. How do architects practice with ethical grace and respond to climate change and energy depletion imperatives? How should architects make their skills available to underrepresented communities so that they can make positive changes to their environments? I am currently working towards a PhD; the working title is 'Live Project Pedagogy - Architecture in the Making'.

## CRAIG STOTT

Project Office Co-Director

I am interested in the impact of 'Live' project learning within architectural education by establishing its value for both the students involved and the communities who act as client for the work undertaken. The intention is to utilise the power of student design to foster ecological and social sustainability in deprived communities through this pedagogic tool.

## PROJECT OFFICE STAFF 2013-2017

Hanzla Ashgar / Part 2 Architectural Assistant  
Graham Davey / Part 1 Architectural Assistant  
Paul Hansell / Part 2 Architectural Assistant  
Andrew Pye / Part 2 Architectural Assistant / Architect

# / Vol 3. PROJECT PARTICIPANTS

## STUDENTS

Aaron Jones  
Adam Lloyd  
Alex Bingley  
Alexander Moriarty  
Alexander Spencer  
Alexandra Rinder  
Ali Jasim  
Amy Ferguson  
Andrew English  
Anna Rosiak  
Ashley Murray  
Barney Stonelake  
Ben Regan  
Ben Rimmer  
Callum Bleasdale  
Callum Hairsine  
Krebs  
Connor Buckler  
Daniel Fox  
Daniel Peinado  
Daniel Wright  
Delphine Boardman  
Dominiq Oti  
Edward Baxter-Garbett  
Francis Henry  
Hardev Singh  
Harry Cox  
Idris Idris Haladu  
Jack Hyslop  
Jack Whitehouse  
Jamie Williams  
Jason Paley  
Joseph Chapman  
Joseph Johnson  
Joshua Jenje  
Josiah Sherwood  
Kate Hopkins  
Kieran Dobinson  
Laura Kershaw  
Leyla Scarlattella  
Louis Smith  
Magdalena Panasewicz  
Maira Salfate Herrera  
Marco Chan  
Maro Antonakou  
Marvin Schmitt  
Matthew Glegg

Matthew Richardson  
Megan Fitzmaurice  
Michal Maksymiszyn  
Mohammad Farooq  
Mohit Gera  
Nadia Luhar  
Nathan Aston  
Nathan Blackledge  
Nicholas Curtis  
Noor Al-Boinin  
Raheem Johanneson  
Rahim Razaq  
Ray Bantug  
Reece Smith  
Rhiannon Evans  
Rob Hilton  
Roberts Opincans  
Ross Kennedy  
Ryan Ainsley  
Sameerah Khalid  
Samuel Richardson  
Sarah Gharbi  
Stuart Norman  
Tarran Coward-Willis  
Thomas Ford  
Thomas O'Callaghan  
Tin Ho  
Tobias Bridger  
Tristan Cox  
Umer Mahmood  
Vanessa Baer  
Westley Forleo  
Will Page  
William Gains  
William Maddinson

## TUTORS

Andrew DuFeu  
Andy Edwards  
Jen Chalkley  
Jessica Bryne-Daniel  
Lauren Moriarty  
Maurice Shapero  
Robin Brinkworth  
Steven Heywood

## ORGANISATIONS

Big Lottery  
Leeds Beckett  
University

## CONSULTANTS /

CONTRACTORS  
Dobsons Construction  
Chippendale Projects  
Giddy Frog

## COLLABORATORS

Gareth Roberts  
Nicholas Wright  
Daniel Wallace  
Daniel Ingram-Brown  
Katy Shaw  
Nuala Cavanagh  
Rachel Connor  
Ben Lear  
Dan Hird  
Jonathan Crosby  
Neil Masterman  
Ricky Adam

## CLIENTS

New Wortley Community  
Association  
Richmond Hill Primary  
School  
Crescent Arts  
Manor Park Surgery  
Otley Courthouse  
SoCo Bradford

## STEERING GROUP

Amy Featherstone  
Dominiq Oti  
Irena Bauman  
Janet Mulcrone  
John Orrell  
Les Webb



**PROJECT OFFICE**

Project Office  
Leeds Beckett University  
B504, Broadcasting Place  
Woodhouse Lane  
Leeds  
LS2 9EN

+44 (0)113 81 26752  
e: [projectoffice@leedsbeckett.ac.uk](mailto:projectoffice@leedsbeckett.ac.uk)  
t: @projectoffice  
i: [project\\_office\\_leeds](mailto:project_office_leeds)  
w: [leedsbeckett.wixsite.com/projectoffice](http://leedsbeckett.wixsite.com/projectoffice)