



LEEDS
BECKETT
UNIVERSITY

Citation:

Paul, L (2013) One Way or Another 2, Group exhibition. [Show/Exhibition]

Link to Leeds Beckett Repository record:

<https://eprints.leedsbeckett.ac.uk/id/eprint/6553/>

Document Version:

Show/Exhibition

The aim of the Leeds Beckett Repository is to provide open access to our research, as required by funder policies and permitted by publishers and copyright law.

The Leeds Beckett repository holds a wide range of publications, each of which has been checked for copyright and the relevant embargo period has been applied by the Research Services team.

We operate on a standard take-down policy. If you are the author or publisher of an output and you would like it removed from the repository, please [contact us](#) and we will investigate on a case-by-case basis.

Each thesis in the repository has been cleared where necessary by the author for third party copyright. If you would like a thesis to be removed from the repository or believe there is an issue with copyright, please contact us on openaccess@leedsbeckett.ac.uk and we will investigate on a case-by-case basis.



LEEDS
BECKETT
UNIVERSITY

Citation:

Lewis Paul (2013) One Way or Another 2, Group exhibition. [Show/Exhibition]

Link to Leeds Beckett Repository record:

<http://eprints.leedsbeckett.ac.uk/6553/>

Document Version:

Show/Exhibition

The aim of the Leeds Beckett Repository is to provide open access to our research, as required by funder policies and permitted by publishers and copyright law.

The Leeds Beckett repository holds a wide range of publications, each of which has been checked for copyright and the relevant embargo period has been applied by the Research Services team.

We operate on a standard take-down policy. If you are the author or publisher of an output and you would like it removed from the repository, please [contact us](#) and we will investigate on a case-by-case basis.

Each thesis in the repository has been cleared where necessary by the author for third party copyright. If you would like a thesis to be removed from the repository or believe there is an issue with copyright, please contact us on openaccess@leedsbeckett.ac.uk and we will investigate on a case-by-case basis.

Mood of Collapse

'One Way Or Another II' by Lesley Logue, Eric Great-Rex, Sarah Taylor & Lewis Paul at Smart Gallery!

posted by moc83 on May 20, 2013



[One Way Or Another II](#) is the current exhibition at [Smart Gallery](#) and features a range of work from [Lesley Logue](#), Eric Great-Rex, [Sarah Taylor](#) & Lewis Paul. The artists were brought together by Logue who wanted to look at the ideas and process of her contemporaries, staging a show based around unfinished works which can still comfortably sit in a gallery setting.

The works cross many areas including sculpture, print & ceramics, all mixed together across the 2 rooms at Smart Gallery. I really love the bear sculpture in the window, complete with its bullet holes and shooting markers, standing tall in the window silently watching the world outside drift by! Another favourite is the wicker boat. Its such a unique shape, instantly recognisable and yet due to the materials completely unpractical for taking out on the water.

This site uses cookies from Google to deliver its services and to analyse traffic. Your IP address and user agent are shared with Google, together with performance and security metrics, to ensure quality of service, generate usage statistics and to detect and address abuse.

[LEARN MORE](#) [OK](#)

Mood of Collapse

The show is running from the 4th of May until the 9th of June so if your looking for something to do then pop along to [Smart](#), have a chat with whoever is looking after the gallery that day and see some cool work! You can also find out a little bit from the artists in the short video below!

Private Video

Log in to watch (if you have permission)

[Log in](#)

[Five Minutes With.... One Way or Another II](#) from [Flux Video](#) on [Vimeo](#).

This site uses cookies from Google to deliver its services and to analyse traffic. Your IP address and user agent are shared with Google, together with performance and security metrics, to ensure quality of service, generate usage statistics and to detect and address abuse.

[LEARN MORE](#) [OK](#)

Mood of Collapse

EXHIBITION
NO. TWO

ONE WAY OR
ANOTHER II

LESLEY LOGUE | ERIC GREAT-REX | SARAH TAYLOR | LEWIS PAUL

4 MAY - 9 JUNE 2013

the SMART gallery
SMART Consultants
9 Albyn Terrace
Aberdeen
AB10 1YP

t: 01224 561977
e: info@wearesmartconsultants.co.uk
www.wearesmartconsultants.co.uk

gallery open:
saturday 12 - 4pm
sunday 12 - 4pm

the SMART gallery
In association with
covellmatthews
ARTISTS

This site uses cookies from Google to deliver its services and to analyse traffic. Your IP address and user agent are shared with Google, together with performance and security metrics, to ensure quality of service, generate usage statistics and to detect and address abuse.

[LEARN MORE](#) OK

Mood of Collapse



This site uses cookies from Google to deliver its services and to analyse traffic. Your IP address and user agent are shared with Google, together with performance and security metrics, to ensure quality of service, generate usage statistics and to detect and address abuse.

[LEARN MORE](#) [OK](#)

Mood of Collapse



This site uses cookies from Google to deliver its services and to analyse traffic. Your IP address and user agent are shared with Google, together with performance and security metrics, to ensure quality of service, generate usage statistics and to detect and address abuse.

[LEARN MORE](#) [OK](#)

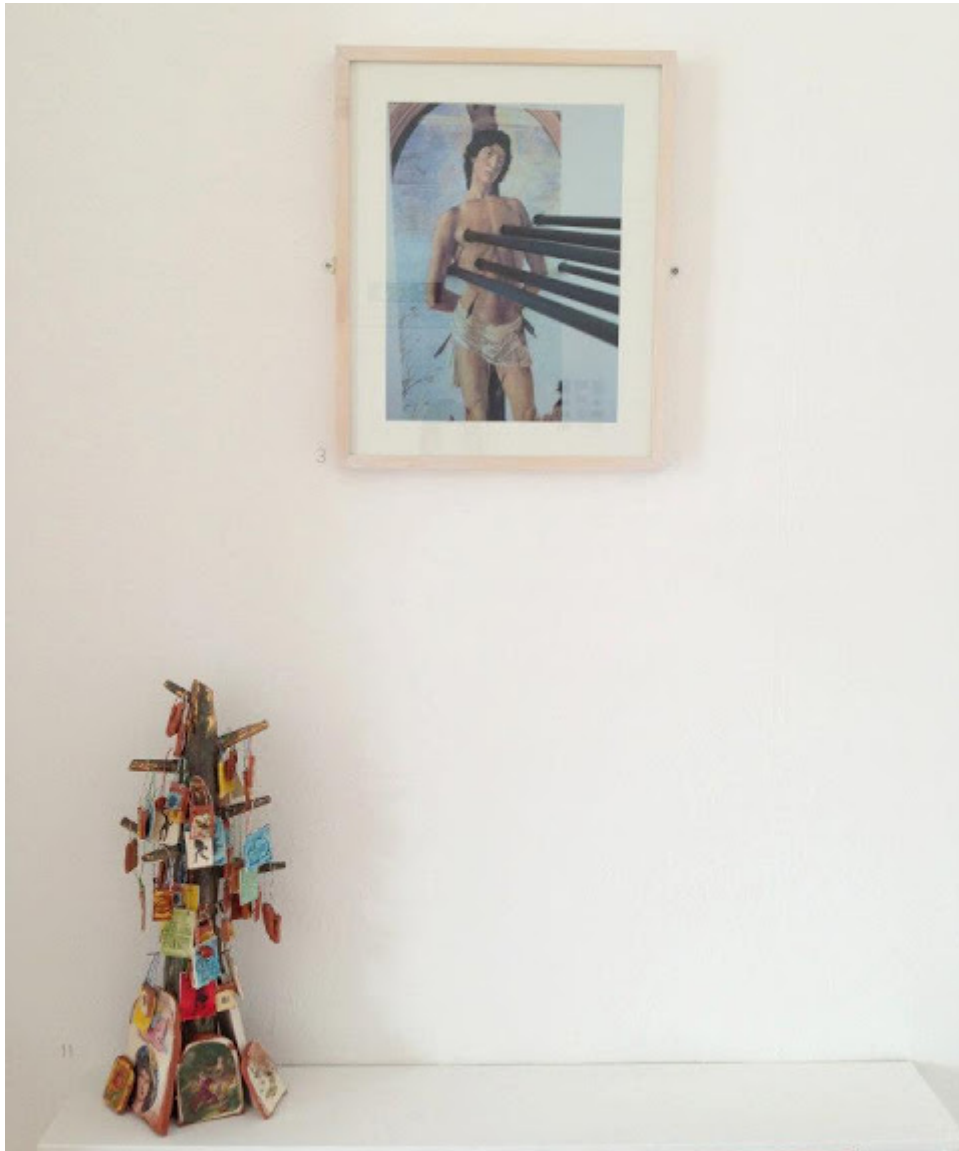
Mood of Collapse



This site uses cookies from Google to deliver its services and to analyse traffic. Your IP address and user agent are shared with Google, together with performance and security metrics, to ensure quality of service, generate usage statistics and to detect and address abuse.

[LEARN MORE](#) [OK](#)

Mood of Collapse



This site uses cookies from Google to deliver its services and to analyse traffic. Your IP address and user agent are shared with Google, together with performance and security metrics, to ensure quality of service, generate usage statistics and to detect and address abuse.

[LEARN MORE](#) [OK](#)

Mood of Collapse



This site uses cookies from Google to deliver its services and to analyse traffic. Your IP address and user agent are shared with Google, together with performance and security metrics, to ensure quality of service, generate usage statistics and to detect and address abuse.

[LEARN MORE](#) [OK](#)

Mood of Collapse



This site uses cookies from Google to deliver its services and to analyse traffic. Your IP address and user agent are shared with Google, together with performance and security metrics, to ensure quality of service, generate usage statistics and to detect and address abuse.

[LEARN MORE](#) [OK](#)

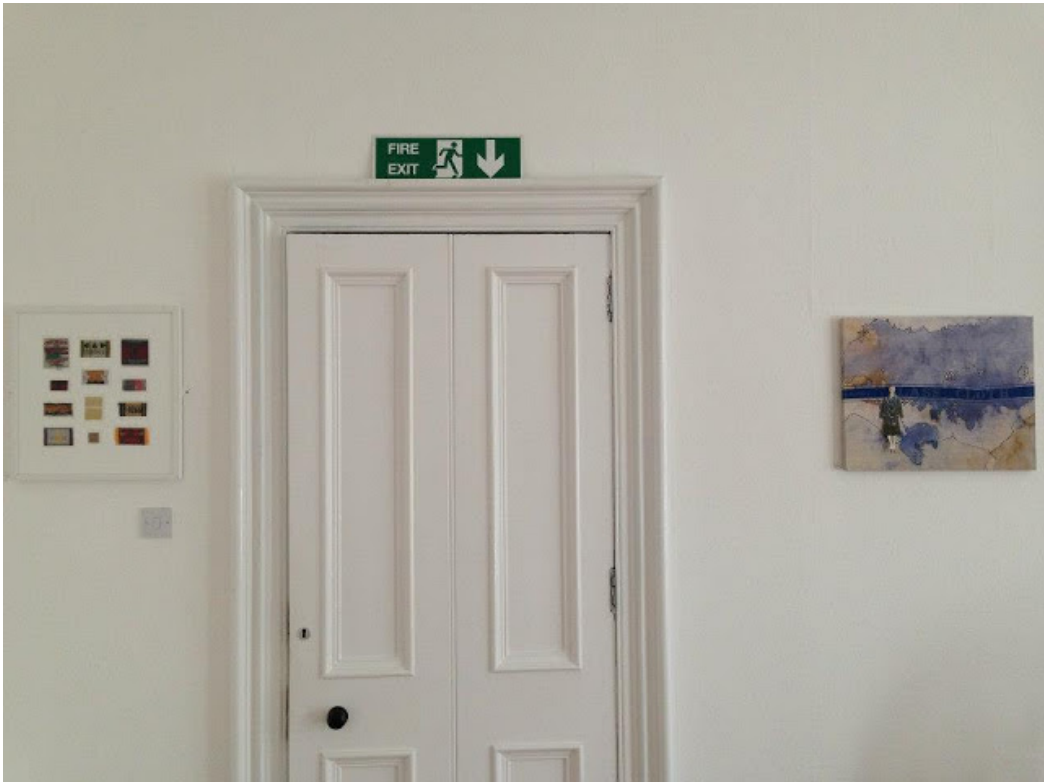
Mood of Collapse



This site uses cookies from Google to deliver its services and to analyse traffic. Your IP address and user agent are shared with Google, together with performance and security metrics, to ensure quality of service, generate usage statistics and to detect and address abuse.

[LEARN MORE](#) [OK](#)

Mood of Collapse



This site uses cookies from Google to deliver its services and to analyse traffic. Your IP address and user agent are shared with Google, together with performance and security metrics, to ensure quality of service, generate usage statistics and to detect and address abuse.

[LEARN MORE](#) [OK](#)

Mood of Collapse



This site uses cookies from Google to deliver its services and to analyse traffic. Your IP address and user agent are shared with Google, together with performance and security metrics, to ensure quality of service, generate usage statistics and to detect and address abuse.

[LEARN MORE](#) [OK](#)

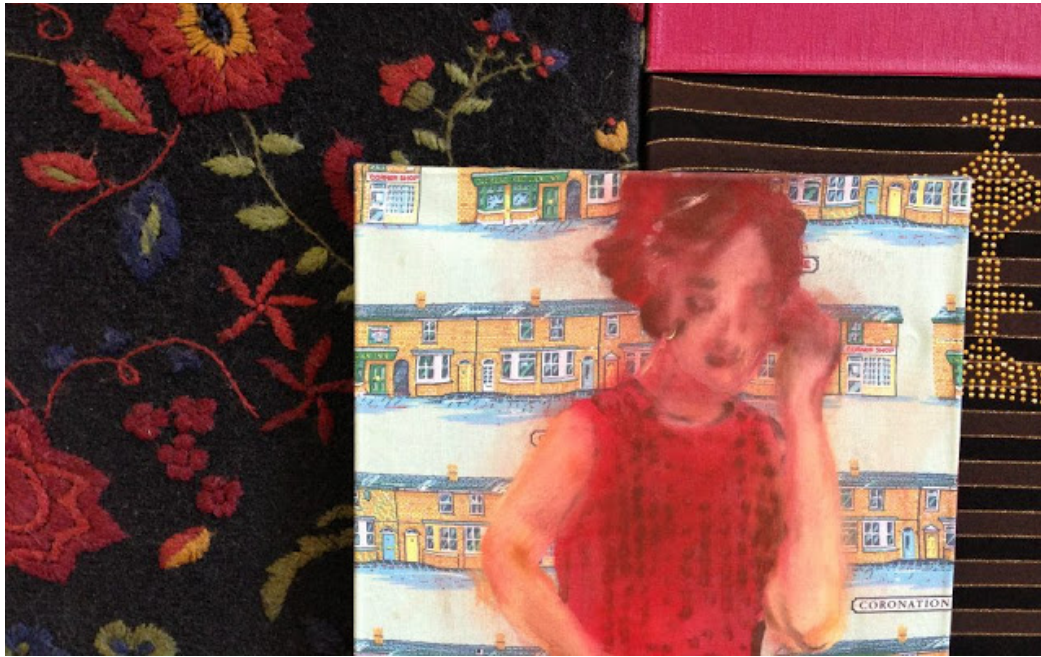
Mood of Collapse



This site uses cookies from Google to deliver its services and to analyse traffic. Your IP address and user agent are shared with Google, together with performance and security metrics, to ensure quality of service, generate usage statistics and to detect and address abuse.

[LEARN MORE](#) [OK](#)

Mood of Collapse



MoC Archive



Popular Posts

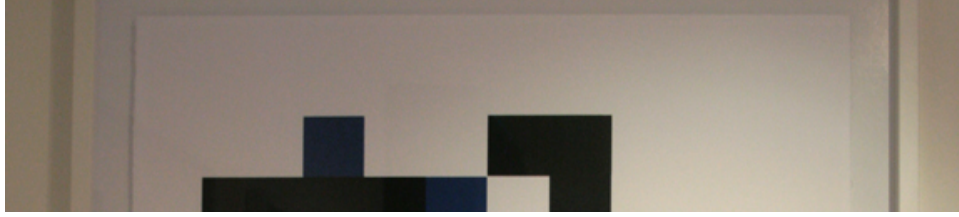


'The Wrong Idea Forever' by Nicola Williams at Gray School of Art!

This site uses cookies from Google to deliver its services and to analyse traffic. Your IP address and user agent are shared with Google, together with performance and security metrics, to ensure quality of service, generate usage statistics and to detect and address abuse.

[LEARN MORE](#) [OK](#)

Mood of Collapse



Colin Taylor @ E.A.R.L's on The Green!

The EARL on The Green is probably my most favourite sandwich shop in the World! The first time I had a Satay Panini (chicken, bacon, peanut butter & sweet chilli sauce) was a pretty special moment, one I will cherish forever. But not just content with keeping my belly ...



'Super Jawa Kart' by Abz Jawa!

In 2016 strange Jawa stencils began appearing around Aberdeen (the small recycling dudes from Star Wars), located on skate ramps and even making an appearance on the Painted Doors Christmas stand. But who was responsible for these stencils and why a Jawa? ...

 Powered by Blogger

This site uses cookies from Google to deliver its services and to analyse traffic. Your IP address and user agent are shared with Google, together with performance and security metrics, to ensure quality of service, generate usage statistics and to detect and address abuse.

[LEARN MORE](#) [OK](#)