



LEEDS
BECKETT
UNIVERSITY

Citation:

Ispoglou, T and McCullough, D and Windle, A and Nair, S and Cox, N and White, H and Burke, D and Kanatas, A and Prokopidis, K (2024) Addressing cancer anorexia-cachexia in older patients: potential therapeutic strategies and molecular pathways. *Clinical Nutrition*, 43 (2). pp. 552-566. ISSN 0261-5614 DOI: <https://doi.org/10.1016/j.clnu.2024.01.009>

Link to Leeds Beckett Repository record:

<https://eprints.leedsbeckett.ac.uk/id/eprint/10416/>

Document Version:

Article (Published Version)

Creative Commons: Attribution 4.0

© 2024 The Author(s).

The aim of the Leeds Beckett Repository is to provide open access to our research, as required by funder policies and permitted by publishers and copyright law.

The Leeds Beckett repository holds a wide range of publications, each of which has been checked for copyright and the relevant embargo period has been applied by the Research Services team.

We operate on a standard take-down policy. If you are the author or publisher of an output and you would like it removed from the repository, please [contact us](#) and we will investigate on a case-by-case basis.

Each thesis in the repository has been cleared where necessary by the author for third party copyright. If you would like a thesis to be removed from the repository or believe there is an issue with copyright, please contact us on openaccess@leedsbeckett.ac.uk and we will investigate on a case-by-case basis.



Narrative Review

Addressing cancer anorexia-cachexia in older patients: Potential therapeutic strategies and molecular pathways



Theocharis Ispoglou^{a,*}, Deaglan McCullough^a, Angela Windle^{b,c}, Sherena Nair^d, Natalie Cox^e, Helen White^f, Dermot Burke^c, Anastasios Kanatas^g, Konstantinos Prokopidis^{h,i}

^a Carnegie School of Sport, Leeds Beckett University, Leeds, UK

^b Department of Nursing and Midwifery, School of Human and Health Sciences, University of Huddersfield, Huddersfield, UK

^c School of Medicine, University of Leeds, Leeds, UK

^d Leeds Teaching Hospitals NHS Trust, Leeds, UK

^e Academic Geriatric Medicine, Faculty of Medicine, University of Southampton, Southampton, UK

^f School of Health, Leeds Beckett University, Leeds, UK

^g School of Dentistry, University of Leeds, Leeds, UK

^h Department of Musculoskeletal and Ageing Science, Institute of Life Course and Medical Sciences, University of Liverpool, Liverpool, UK

ⁱ Liverpool Centre for Cardiovascular Science, University of Liverpool, Liverpool, UK

ARTICLE INFO

Article history:

Received 3 November 2022

Accepted 10 January 2024

Keywords:

Cancer cachexia

Anorexia

Muscle wasting

Sarcopenia

Nutrition

Drugs

SUMMARY

Cancer cachexia (CC) syndrome, a feature of cancer-associated muscle wasting, is particularly pronounced in older patients, and is characterised by decreased energy intake and upregulated skeletal muscle catabolic pathways. To address CC, appetite stimulants, anabolic drugs, cytokine mediators, essential amino acid supplementation, nutritional counselling, cognitive behavioural therapy, and enteral nutrition have been utilised. However, pharmacological treatments that have also shown promising results, such as megestrol acetate, anamorelin, thalidomide, and delta-9-tetrahydrocannabinol, have been associated with gastrointestinal and cardiovascular complications. Emerging evidence on the efficacy of probiotics in modulating gut microbiota also presents a promising adjunct to traditional therapies, potentially enhancing nutritional absorption and systemic inflammation control. Additionally, low-dose olanzapine has demonstrated improved appetite and weight management in older patients undergoing chemotherapy, offering a potential refinement to current therapeutic approaches. This review aims to elucidate the molecular mechanisms underpinning CC, with a particular focus on the role of anorexia in exacerbating muscle wasting, and to propose pharmacological and non-pharmacological strategies to mitigate this syndrome, particularly emphasising the needs of an older demographic. Future research targeting CC should focus on refining appetite-stimulating drugs with fewer side-effects, specifically catering to the needs of older patients, and investigating nutritional factors that can either enhance appetite or minimise suppression of appetite in individuals with CC, especially within this vulnerable group.

© 2024 The Author(s). Published by Elsevier Ltd. This is an open access article under the CC BY license (<http://creativecommons.org/licenses/by/4.0/>).

1. Introduction

An urgent necessity to identify effective treatments for cancer cachexia (CC), a fat and muscle wasting condition, is highlighted by its high prevalence (up to 80 %) in advanced malignant cancers [1]. In this review, we explore CC with a specific focus on the anorexia

aspect, which is a key component of the syndrome, characterised by weight loss, muscle mass reduction, and a diminished desire to eat [2,3]. This condition contributes significantly to the lower quality of life (QoL) [4], morbidity, and mortality rates, with approximately 20–30 % of cancer patient deaths attributed to this condition [5]. The impact can be more pronounced in older cancer patients due to the combined effects of ageing and cancer-related muscle wasting. Its increasing global prevalence is particularly alarming in light of the escalating cancer rates, especially in

* Corresponding author.

E-mail address: T.Ispoglou@leedsbeckett.ac.uk (T. Ispoglou).

developed countries such as the USA, where approximately 70 % of cancer cases occur in older adults over the age of 65 [6]. The combination of ageing, sarcopenia, cancer, and cachexia presents unique challenges in this population [7,8]. While direct comparisons of cancer cachexia prevalence in younger versus older patients are limited, evidence suggests a higher susceptibility in older adults. Older patients with cancer cachexia tend to display lower Geriatric Nutritional Risk Index scores than younger patients, which may be linked to greater risk of weight loss, muscle wasting, and elevated inflammatory markers [9,10]. These findings align with the observations that older patients often have lower baseline levels of skeletal muscle mass, increased muscle attenuation, and a lower body mass index (BMI), all of which are indicative of sarcopenia and have been associated with an increased risk of mortality [11–14]. Addressing sarcopenia in older adults with cancer is therefore crucial to preserving their independence, improving their quality of life, optimising their ability to tolerate and respond to cancer treatments, with implications for healthcare resource optimisation [14]. All these concerns come in the context of the overall growing burden of non-communicable diseases, including cancer, cardiovascular disease, and diabetes [15]. In 2020, cancer alone led to 10 million deaths and 19.3 million new diagnoses [15], a trend projected to worsen, which could further stress health systems and financial stability [16]. Moreover, the prevalence of CC in older cancer patients often coincides with sarcopenia, further complicating their clinical management and exacerbating the challenges in treating this demographic.

Sarcopenia, a disease characterised by the loss of muscle mass, strength, and function, is a major health concern due to its high prevalence in older adults and its negative impact on QoL, survival rates, surgical complications, and length of hospital stay in cancer patients [17–22]. This condition, also prevalent in cancer patients [23], shares pathophysiological mechanisms with CC [24], and its key feature, pronounced muscle mass loss with or without accompanying losses in adipose tissue, contributes to reduced QoL [5]. While aging is the primary cause of sarcopenia, other factors such as disease and physical inactivity may also contribute to its development (i.e., secondary sarcopenia) [21]. Addressing protein and energy deficiencies is crucial for combating sarcopenia in older adults, whether they are healthy or recovering from disease [25,26]. However, this is complicated by age-related anorexia as older adults typically have a reduced appetite compared to younger adults [27]. Challenges in increasing energy and protein intake in hospitalised older patients with advanced cancer further contribute to malnutrition [28]. Given these difficulties, alongside the heightened risk and prevalence of dysphagia [29], anabolic resistance [30], and a higher incidence of oral health diseases in older adults [31], focused attention on this demographic is crucial.

Cancer cachexia (CC), a condition marked by a diminished desire to eat, independently predicts of mortality in cancer patients and significantly exacerbates sarcopenia by impairing appetite and nutrient intake [32–34]. This condition contributes to the decline in health of older adults affected by diseases such as cancer, highlighting the need of diagnosing CC [35,36]. Chemotherapy side effects, such as appetite suppression, fitness loss, and susceptibility to infections, can exacerbate CC [34], a key component of cachexia [37,38]. Additionally, nutrition impact symptoms, such as mucositis and other treatment-related or tumour-related abnormalities in gastrointestinal function, may reduce food intake [39]. However, early satiety is a primary cause of decreased consumption in cancer patients [40]. Therefore, addressing these symptoms may assist patients at various treatment stages in improving clinical outcomes, managing their disease more effectively, and enhancing their quality of life. When tackling CC through pharmacological or non-pharmacological interventions, it is essential to consider

factors such as the appetite-suppressing properties of protein-rich foods [41,42] and the phenomenon of exercise-induced anorexia [43] to ensure a more effective approach.

In the context of cancer patients, particularly older adults, the interrelated issues of anorexia, cachexia, and sarcopenia represent significant challenges due to age-related factors that contribute to decreased appetite and accelerated muscle wasting [44,45]. Addressing these intricately linked conditions is critical to improving clinical outcomes and managing the health of these patients. Therefore, this narrative review aims to elucidate the molecular mechanisms underpinning CC and propose pharmacological and non-pharmacological strategies to mitigate this syndrome. By doing so, it aspires to inform future research and interventions that can enhance patient care and outcomes in this critical area of medical research.

2. Cancer cachexia: a multifaceted challenge in diagnosis, progression, and impact on skeletal muscle health

Building on our focus on anorexia within the CC syndrome, as outlined in the introduction, this section expands on the complex interplay between muscle mass breakdown and anorexia in CC. Diagnosing CC involves a blend of clinical examination, nutritional assessments, and evaluation of biochemical parameters. However, within the UK's National Health Service, full CC assessment often gets sidetracked due to time and resource constraints [46]. The progression of the CC syndrome is multifaceted, involving not only elevated inflammation, proteolysis, and metabolic shifts in multiple tissues, such as muscle and adipose tissue, but also significant changes in appetite and nutritional intake. These factors collectively contribute to the characteristic weight loss seen in cancer patients, with anorexia playing an important role [34,35,47], and ageing having an additional impact partly due to age-related suppression of appetite and other physiological changes [22,27,48–50]. In this review, we explore the specific molecular pathways contributing to anorexia within CC, examining the interplay between cytokines, hormonal changes, and treatment-related side effects, and how they collectively exacerbate this condition, with a particular focus on how these factors affect older cancer patients.

Specifically, weight loss, a significant marker in cancer patients, can result from both the disease's initiation and the side effects of its treatment [51]. This weight loss has been linked to reduced food intake, as shown by a recent multicentre study [52]; the findings that daily energy intake for patients with severely reduced intake only met about 50 % of the measured resting energy expenditure are also consistent with a very low-calorie diet, typically reserved for intentional weight loss in obese patients and used in limited circumstances. Reduced food intake and C-reactive protein (an inflammatory marker) were significant predictors of severe weight loss and overall survival in the same study. Furthermore, the study found that reduced food intake was independently associated with severe weight loss, as was C-reactive protein [52].

Head and neck cancer (HNC) patients, for example, often face challenges in eating due to large tumours or aggressive treatment, which can cause dysphagia, leading predominantly to malnutrition rather than molecularly-driven cachexia [53]. On the other hand, pancreatic ductal adenocarcinoma (PDAC) presents a distinct metabolic pattern. The growth of tumours specifically within the pancreas has been identified as a potential cause of tissue wasting, likely due to diminished exocrine pancreatic function [40]. This distinct phenomenon in PDAC, is indicative of cancer cachexia attributed to compromised exocrine pancreatic function, and therefore pancreatic enzyme replacements can help counteract this tissue loss [54].

Given the prolonged effects of treatment, regular and consistent patient assessments during the cancer survivorship phase are essential. While the UK offers guidelines for nutritional management [55], achieving the recommended nutritional intakes, such as high protein, remains a challenge. With cachexia present in many cancer patients at diagnosis, its link with survival is concerning [56]. The consequences of post-surgical interventions for cachexia are yet to be fully understood. For HNC cases, where CC can result in severe consequences [57], interventions involving the use of feeding tubes have been considered. However, more research is required, especially concerning the prevalence of refeeding syndrome in HNC [58].

The widespread prevalence of CC, especially when food intake is compromised, has a profound impact on life expectancy and QoL, primarily due to muscle loss [1]. To combat this, understanding the intricacies of CC becomes crucial. Central to this fight is the preservation and promotion of muscle mass. An increase in muscle mass is closely linked to appetite and energy intake enhancements, pivotal factors in effectively handling CC [49].

Skeletal muscle size and quality are primarily determined by the balance of muscle protein synthesis (MPS) and muscle protein breakdown (MPB), which are influenced by anabolic signals and proteolytic systems [59]. Disruptions, such as in cancer, tilt this balance towards MPB, causing muscle atrophy [60,61]. The ubiquitin-proteasome system (UPS) is a major driver of skeletal muscle proteolysis, although, the Ca^{2+} -dependent calpains and lysosomal-autophagy system also play a role [62,63]. In the UPS, proteins are tagged with ubiquitin molecules (polyubiquitination) through ligases (E1, E2, & E3), signalling their degradation by the 26S proteasome [64]. Large cytoskeletal proteins are first broken down by Ca^{2+} -dependent calpains, then further degraded by the UPS [65]. In addition, autophagy is a self-destructive process with deprivation of nutrient and low energy availability as key steps activating autophagy (i.e., AMPK), with autophagy being also a key component of adaptive cell responses during nutrient deprivation [66,67]. The lysosomal-autophagy system involves the formation of an autophagosome, which selectively engulfs damaged organelles and proteins before fusing with the lysosome to begin enzymatic degradation [68]. Within the acidic lysosomal lumen, the engulfed organelles are degraded by cathepsin proteases [68]. Growth factors such as insulin also play a role in modulating protein balance, as activation of the PI3K/Akt signalling cascade stimulates the mechanistic target of rapamycin complex 1 (mTORc1)-dependent MPS while also inhibiting proteolysis via inhibition of Forkhead Box O (FOXO)-dependent signalling of muscle RING-finger protein-1 (MuRF-1) and atrogin-1 [69]. In cancer, elevated pro-inflammatory cytokines disrupt these pathways [60,61].

In response to cancer, immune cells secrete interleukins (IL-1, IL-6, and IL-8), tumour necrosis factor- α (TNF- α) and transforming growth factor family members (TGF- β), growth differentiation factors, and Activin A, promoting muscle tissue proteolysis [61]. Interleukin expression, through transducer and activator of transcription-3 (STAT3) signalling, triggers atrophic genes in muscle [70]. TNF- α interacts with nuclear factor-kappa-B, elevating atrogin-1 and inhibiting skeletal muscle regeneration [71]. TGF family members, likely mediated by glucocorticoids (i.e., cortisol) and chemotherapy, upregulate in CC [61]. Elevated TGFs (myostatin and Activin A) induce Small Mothers Against Decapentaplegic 2/3 (SMAD 2/3) signalling, leading to Akt/mTOR inhibition and nuclear translocation of FOXO [72,73]. This results in inhibited MPS, impaired satellite cell activation, myoblast proliferation and differentiation, and upregulation of atrophic genes and the UPS via activation of atrogin-1 [74] (Fig. 1). Cytoskeletal protein degradation rises in CC, perhaps due to poor Ca^{2+} homeostasis and calcium/calmodulin-dependent protein kinase II activation leading to

enhanced calpain activity, as observed in patients with gastric cancer for example [75,76]. While autophagy's role in CC is unclear, it seems more prominent in cardiac than skeletal muscle atrophy due to the heart's faster protein turnover [77]. Inflammation's role in upregulating the UPS and atrophy has largely been explored in cellular and animal models of CC which help demonstrate the causative effects of inflammation on atrophy [78]. Despite human data associating inflammatory cytokines with CC [79–81], anti-inflammatory drug trials show inconsistent results. Some suggest benefits such as reduced TNF- α expression and increased lean body mass and grip strength in cancer patients [82,83], however challenges persist due to varied study designs and patient conditions.

Ultimately, CC increases atrophic signalling molecules while concurrently impairing anabolic signalling, leading to a significant imbalance in protein turnover in favour of muscle degradation. The combination of this pro-inflammatory state, undergoing chemotherapy, and decreased muscle mass will only serve to exacerbate the CC conditions due to increased fatigue leading to prolonged bed rest and physical inactivity [84]. This muscle wasting syndrome is indeed difficult to combat, particularly due to the suppressed appetite that is synonymous with CC and ageing populations. Understanding how appetite is regulated in populations with CC who are more likely to be of older age may give insight on how to increase energy and protein intake to alleviate increased muscle protein turnover.

3. Interplay of age-related anorexia and cancer cachexia: mechanisms and implications

Considering that around 70 % of cancer patients are aged 65 or over [6], addressing age-related anorexia is essential when dealing with CC, as this demographic may encounter distinct challenges in sustaining adequate nutrition and appetite control. Age-related anorexia [85] involves multiple mechanisms, including changes in energy balance regulation [86], and disruptions to reward-based hunger drives [87]. Investigating the psycho-biological control mechanisms of satiation and satiety [88] is vital for understanding the interplay between ageing and CC in relation to appetite and dietary intakes. Appetite hormone dysregulation is common in ageing animals and humans [89,90], with changes in satiety hormone release such as increased cholecystokinin, PYY, insulin, and leptin levels [27], and reduced hunger drive due to lower acetylated ghrelin levels and potential sensitivity to total ghrelin [91]. The combined effects of both age-related and cancer-induced appetite changes add further complexity to this interplay when dealing with older cancer patients. The CC process involves multiple endocrine signals as well as psycho-biological control mechanisms (Fig. 2). Furthermore, resting basal metabolic rate (BMR), another major hunger driver, declines with age, largely attributed to the loss of fat-free mass during sarcopenia development [92]. Interestingly, increased fat-free mass in healthy older adults is associated with higher appetite and energy intake [49]. Older individuals also experience reduced taste sensitivity and higher thresholds for the five main modalities-sweet, salt, bitter, sour, and umami-to varying degrees [93], which is attributed to a decrease in taste bud number and structure. Altered signalling in taste perception and reward centres of the brain has been observed in older adults through functional magnetic resonance imaging (fMRI) studies [86,94]. These changes may contribute to a reduced hedonic or reward-based hunger drive during ageing, which can also affect CC.

Anorexia of ageing and CC affect appetite, with hypothalamic inflammation (locally activated pro-inflammatory pathways) and ghrelin contributing to observed alternations. The anorexia of ageing is present to a lesser extent in healthy older adults, who also experience reduced hunger and increased satiety [86], while CC

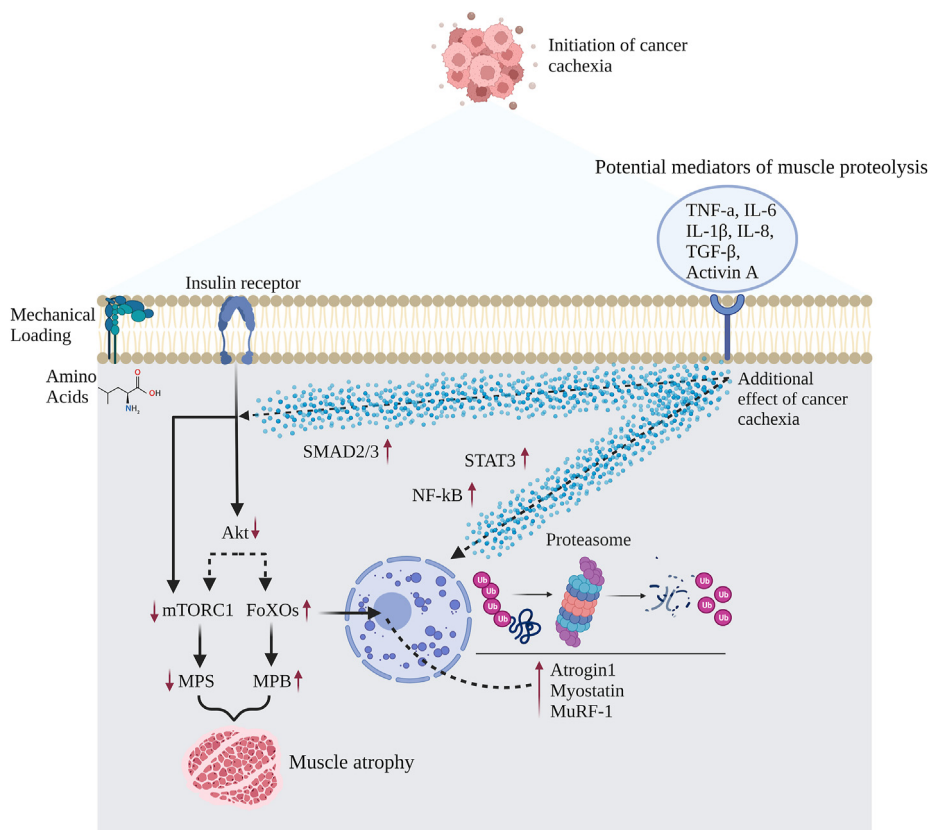


Fig. 1. Potential mechanisms related to inflammatory responses describing the extra impact of CC on muscle proteolysis based on animal and human studies. Akt, protein kinase B; FoXOs, forkhead box transcription factors; IL-1β, interleukin-1β; IL-6, interleukin-6; IL-8, interleukin-8; MPB, muscle protein breakdown; MPS, muscle protein synthesis; mTORC1, mammalian target of rapamycin complex 1; MuRF-1, muscle RING-finger protein-1; NF-κB, nuclear factor-kappa beta; STAT3, signal transducer and activator of transcription 3; TGF-β, transforming growth factor-β; TNF-α, tumour necrosis factor-alpha.

remains prevalent across all ages of affected populations (Fig. 2). Hypothalamic inflammation may cause neurochemical disturbances that interfere with monoaminergic neurotransmission and serotonergic activity, which are likely influencing hormone levels such as ghrelin, explaining food intake changes in patients with CC [95,96]. Notably, active ghrelin levels and the active to total ghrelin ratio are significantly higher in patients with cancer-induced cachexia compared to noncancer controls [97], suggesting ghrelin's key role in CC [98].

Neuropeptides and hormones in CC can also influence the regulation of appetite. For example, patients undergoing esophagectomy have shown elevated postprandial levels of glucagon peptide-1 (GLP-1) compared to healthy controls [99]. A recent *in vivo* study demonstrated that cancer-induced dysregulation of neuropeptides promotes CC by tumour cell-secretion of Dilp8 binding to the Lgr3 receptor in the brain, which in turn upregulates the anorexigenic gene NUCB1 and downregulates orexigenic peptides short neuropeptide (sNPF) and NPF [100]. These peptides may promote appetitive visual memories [101] and mediate smell [102]. Interestingly, Dilp8 inhibition enabled the recovery from CC, although it was unable to restore overall organ wasting [100]. *In vitro* treatment with INSL3 in mouse hypothalamic cells was found to activate NUCB2 and suppress NPY in a Lgr8-dependent manner, leading to significantly reduced food intake, potentially via dysregulation of agouti-related peptide (AgRP) [100]. The same authors reported an increased insulin-like3 peptide (INSL3) profile in patients with pancreatic cancer; a peptide that is secreted from tumour tissues and induces anorexia through the Lgr3 receptor in the brain. Moreover, increased levels of the G-protein-coupled

receptor, sphingosine 1-phosphate receptor (S1PR1), in hypothalamic pro-opiomelanocortin (POMC) neurons persistently activating STAT3 and the melanocortin system in rat models may further describe dysregulated energy homeostasis during CC [103]. Disturbance of the hypothalamic STAT3 signalling leads to abnormal neurotransmitter stimulation, accompanied by anorectic responses [104]. Leptin injections could enhance STAT3 activation in multiple hypothalamic regions [105], further elucidating its involvement in CC. Stimulation of calcitonin gene-related peptide (CGRP) neurons may also mediate anorexigenic responses during CC, considering that inactivation of CGRP neurons in the parabrachial nucleus promotes hyperphagia in mice implanted with Lewis lung carcinoma cells [106]. CGRP neurons are stimulated in the external lateral parabrachial nucleus (PBel) and suppress food consumption via inhibition of hypothalamic AgRP neurons that induce orexigenic effects [107].

Dysregulation of neuropeptides and hormones can hinder food consumption in CC, partly due to increased secretion of circulating cytokines such as TNF-α, which has been linked to heightened bitterness in animal models [108]. A murine model can be used for laryngeal chemosensory research, as human and mouse larynges contain chemosensory cells and nerve fibres that respond to chemical stimuli similarly [109]. Elevated serum macrophage inhibitory cytokine 1 (MIC-1)/growth differentiation factor-15 (GDF-15) levels have been implicated in decreased energy intake [110], BMI [111,112], and severe appetite loss [113]. GDNF-family receptor α-like (GFRAL), a high-affinity receptor for GDF-15, binds to GDF-15 *in vitro* and is necessary for its metabolic effects on body mass and calorie intake *in vivo* in mice [113]. GFRAL is solely

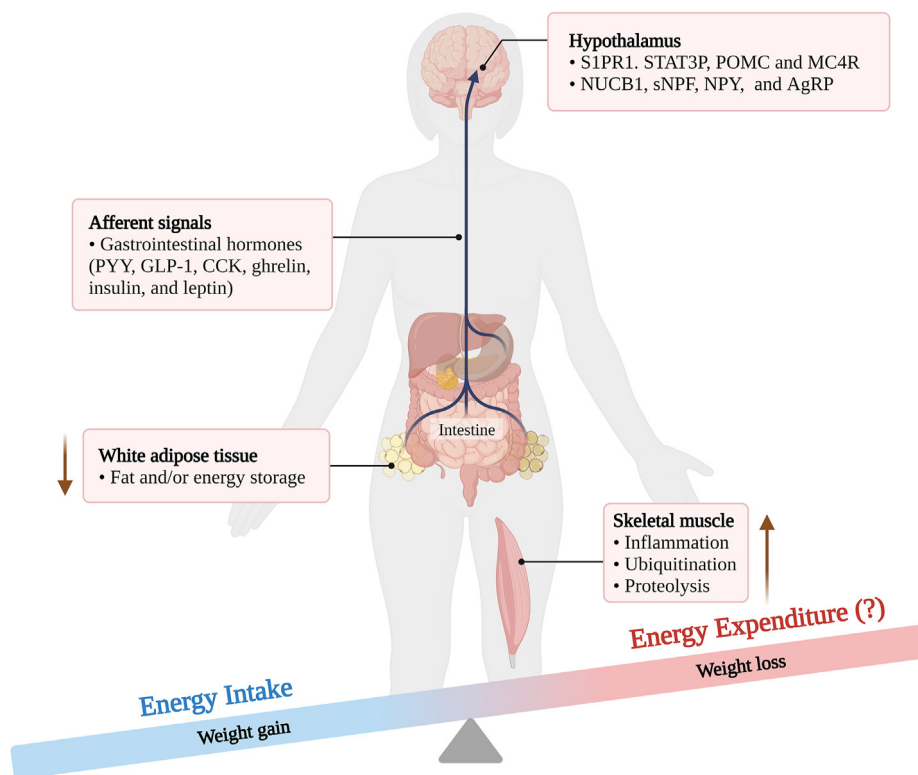


Fig. 2. Description of potentially relevant mechanisms involved in appetite dysregulation during CC. AgRP, agouti-related peptide; CCK, cholecystokinin; GLP-1, glucagon peptide-1; MC4R, melanocortin 4 receptor; NUCB1, nucleobindin 1; POMC, proopiomelanocortin; PYY, peptide YY; S1PR1, Sphingosine-1-Phosphate Receptor 1; phospho-signal transducer and activator of transcription; sNPF, short neuropeptide F.

expressed in hindbrain neurons, suggesting a central mechanism by which GDF-15 controls food intake [113]. MIC-1 may suppress appetite through interaction with the TGF-B type II receptor in the hypothalamus, where it also increases and decreases neuropeptide Y and POMC expression, respectively, in the arcuate nucleus [114]. TNF secretion in sweet and umami taste bud cells expressing the taste receptor T1R3 [115], and interleukin-10 (IL-10) in type II bitter cells [116], suggest that dysregulated inflammatory signalling may alter taste perception, although their peripheral appetite responses in humans remain largely unknown. A recent study found that emergency bowel surgery patients, including cancer patients, experienced worse palatability symptoms than elective cancer surgery patients [117], possibly due to increased inflammatory markers such as TNF- α . However, these markers were not measured in the feasibility study, which focused on postoperative nutritional supplement acceptability. In the context of ageing, individuals with poor physical, mental, or social health may experience exacerbated effects due to factors such as increased inflammation, which has been associated with poor appetite in general hospitalised older populations [118]. Older individuals diagnosed with cancer are likely to exemplify those experiencing worsened anorexia of ageing; however, it is crucial to understand the additional impact specifically of CC on this, considering the high prevalence of cancer in this age group.

4. Pharmacological and non-pharmacological means to address and manage CC

Management of CC through pharmacological methods has been a subject of debate due to varying levels of evidence in clinical practice, leading to consensus-based guidelines rather than ones based on large scale clinical trials [119]. In this context, special

attention is needed for older cancer patients. Considering the age-related physiological impairments in organ function that affect drug metabolism and pharmacokinetics [120], these patients require pharmacological approaches that are specifically tailored to their altered metabolism and drug sensitivity. Diverse pharmacological options have been proposed to treat CC's complications and symptoms, given its unidentified single aetiology. The options fall into four categories: drugs to alleviate symptoms of nausea, reduce gastric acid secretion, manage diarrhoea and constipation, stimulate mood to aid appetite, and a combination of drugs to potentially enhance the anabolic aspects of metabolism.

In a holistic approach to cancer management, non-pharmacological strategies play a key role in managing CC. These rapidly evolving strategies, including exercise regimes, the use of complementary medicine, psychosocial, and nutritional interventions, complement formal treatment modalities are an integral part of the treatment plan, with special considerations for the unique needs and limitations of older cancer patients, ensuring personalised and effective treatment plans [121].

5. Pharmacological means to address CC

5.1. Antidepressants and appetite stimulants

Mirtazapine, a noradrenergic and serotonergic antidepressants that promotes sleep, offers a multifocal approach to addressing CC by promoting sleep, increasing appetite, and regulating mood [122,123]. Its use in older patients with CC requires careful monitoring due to the increased risk of adverse drug events, medication non-adherence, and potential interactions with other medications commonly prescribed in this age group [124]. It can also improve gastric motility as a 5HT1A receptor agonist, potentially leading to

weight gain [125]. While small studies have found that up to 24% of patients gained at least 1 kg after 4 weeks of mirtazapine treatment (15–30 mg), larger scale trials are required to confirm these findings [126]. Although weight gain was not reported in terms of muscle mass or body fat, these results are encouraging to avoid negative energy balance states that lead to accelerating muscle catabolism [126]. In contrast, a recent study administering mirtazapine (15 mg/d) for 8 weeks in a younger patient cohort (~50 year average age) with CC did not display greater appetite scores compared to placebo [127], while in an open-label study, 7 weeks with mirtazapine treatment led to small increases in appetite in older cancer patients (average age over 60 years) [128]. Hence, the available evidence for mirtazapine does not currently advocate for its efficacy in promoting appetite, especially in younger cancer patients, but it may be more beneficial in older patients. Other psychotropic medications being explored include olanzapine, which has shown promise in a recent trial [129]. Administered at a low dose (2.5 mg daily) alongside chemotherapy, olanzapine significantly enhanced appetite and weight gain in patients with advanced malignancies, with 60% of patients in the olanzapine group gaining more than 5% body weight. This intervention also led to improved quality of life with minimal side effects, highlighting its potential utility in CC management [129].

Appetite stimulants that have been studied in the context of cancer include ghrelin-receptor agonists and cannabinoids [119]. These agents could be particularly beneficial for older patients with CC, considering their potential to stimulate appetite and address age-related anorexia, a significant contribution to undernutrition and adverse health outcomes in older adults [130]. Ghrelin, while showing promising appetite-stimulating effects in patients with gastrointestinal [131] and oesophageal cancer [132], has limited use due to its short half-life, parenteral mode of delivery, and restricted availability. Anamorelin, a ghrelin-receptor agonist, holds promise for improving appetite scores, meal enjoyment, and physical condition in patients (average age over 60 years) with non-small cell lung cancer over 12 weeks following a 100 mg dose [133,134], alongside increases in lean mass [135]. Likewise, even lower doses (50 mg/d) for a short duration (3 days) can promote greater appetite and increase body weight compared to placebo [136]. Ongoing 24-week trials (NCT03743064, NCT03743051) are investigating the efficacy of anamorelin in counteracting CC in patients with non-small cell lung cancer. Preliminary findings from one of those studies showed that anamorelin improved body weight and anorexia-related symptoms in patients with CC and a low BMI, demonstrating durable efficacy and favourable safety and tolerability [137]. However, other agents such as melatonin, despite their potential appetite-stimulating properties, by reversing hypophagia in male Wistar rats through suppression of the serotonin type 2A (5-HT_{2A}) receptor [138], no benefits have been observed in advanced cancer patients following 4 weeks of 20 mg daily oral administration [139].

Cannabinoids, acting as neurotransmitters through G-protein coupled receptors, have the potential to improve appetite and regulate weight [140]. Their use in older cancer patients necessitates caution due to impaired metabolism, potential for drug interactions, and increased sensitivity to drug-induced side effects [141]. Strict prescription policies and side effects such as hallucinations, vertigo, and cardiovascular risks limit their use [119]. Delta-9-tetrahydrocannabinol (THC) initially showed promise in stimulating appetite in patients with advanced cancer, however, in a placebo-controlled RCT, subjective appetite scores between groups, which also included a placebo, did not differ following a 2.5 mg dose twice daily for 6 weeks [142]. Interestingly, in a double-blind pilot RCT, THC enhanced chemosensory perception and food taste and led to greater caloric intake in the short-term (18 days). This study adopted an incremental dosage protocol, with the majority of

patients receiving 5 mg/d [143]. The discrepancies between these studies [142,143] studies could be due to various methodological reasons, such as dose protocol, population, and choice of tests to measure appetite. For instance, the study by Brisbois et al. [143] initiated patients at a low dosage during the first three days to build tolerance and minimise adverse effects. They also used tools that were more sensitive than those employed by Strasser et al. [142] to assess appetite. In the latter multicentre instigation [142], which was conducted across different countries and thus implies potential population disparities, there was also a high incidence of adverse events, participant withdrawals, and deviations from the stipulated protocol. Moreover, another cannabinoid, nabilone, has failed to enhance appetite in lung [144] and neck cancer patients [145], concluding that evidence for medicinal cannabis use in enhancing appetite to counteract CC is limited [146]. An ongoing clinical trial utilising an anti-GDF-15 agent is investigating its impact on CC patients with advanced cancer (NCT04803305).

5.2. Anabolic drugs

Anabolic drugs have been suggested for their properties of alleviating anabolic resistance during ageing, but also for their appetite-stimulatory effects, however, they also require careful consideration in older cancer patients due to the potential adverse effects and medication interactions. In patients following surgery for esophageal cancer, 5 injections (50 mg each) of nandrolone decanoate over 3 months did not display significant changes compared to placebo [147]. No major side effects were observed in the latter study, however, use of anabolic steroids such as nandrolone decanoate can have serious adverse effects, mainly of an endocrine nature [148], which can potentially influence adaptive responses. For example, progesterone analogues such as progestins, a class of anabolic steroids, have been shown to improve the appetite, weight, and quality of life of patients with cancer, although side effects include thromboembolic events, oedema, and are associated with high rates of death [119,149,150]. Studies utilizing medroxyprogesterone acetate, a steroid and derivative of progesterone, for 6–12 weeks in advanced cancer stimulated appetite and increased food intake, although these outcomes were insufficient to benefit lean body mass and functional performance [151,152]. Interestingly, non-steroidal selective androgen receptor modulatory drugs such as enobosarm, have shown increased appetite scores in obese cancer patients following oral administration of 1 mg, however, this effect was alleviated in the groups receiving 3 mg/d [153]. Moreover, administration of the steroid megestrol acetate has been considered the most tested product concerning CC. For over 3 decades, multiple trials have consistently displayed a positive effect against CC, promoting appetite and food intake [154–180]. Side effects of megestrol administration include central nervous system effects, adrenal insufficiency, and thromboembolism at high doses [181]. Research is needed to identify the most effective megestrol acetate dose, duration, patient age, and cancer stage that can be most beneficial. Notably, the development of anabolic drugs that will accompany the appetite-stimulating effects with lower rates of side effects is warranted. Finally, acceptable and effective treatments may include the use of non-steroidal drugs such as long-acting insulin; Lundholm et al. (2007) found that insulin stimulated carbohydrate intake and increased whole body fat without affecting lean tissue mass in patients with mainly advanced gastrointestinal malignancy [150]. Importantly, survival rates in insulin-treated patients improved.

5.3. Cytokine mediators and corticosteroids

The potential of pro-inflammatory cytokines, such as TNF- α , to reduce appetite and influence mood by acting on brain receptors has

brought attention to cytokine mediators to regulate appetite. Cytokines act on hunger centres in the hypothalamus; they can induce anorexia, while they can also interfere with glucose transport into the cells, as demonstrated by decreased concentrations of GLUT-4 transporters in stressed muscles as a result of downregulation of protein synthesis by TNF- α [182]. The drug thalidomide, despite its toxicity and serious side effects [183], has been shown to suppress and downregulate the stimulation of the inflammatory cytokine TNF- α and inhibit the transcription factor NF κ B, promoting anti-inflammatory properties [184–186]. Daily administration (200 mg) of thalidomide in patients with advanced pancreatic cancer has exhibited small increases in weight gain (0.37 kg) and arm muscle mass (1.0 cm³) after 4 weeks, while it attenuated weight and lean body mass losses compared to placebo at week 8 [187]. The risk of side effects from thalidomide, such as peripheral neuropathy, may be of particular concern in the older patient population [188]. A shorter-term trial (2 weeks) also showed that 100 mg thalidomide led to lower appetite loss compared with placebo, although the cytokine profile was not statistically different between groups [189]. Other drugs purported to have anti-inflammatory properties, such as pentoxifylline and infliximab, revealed no efficacy in preventing appetite losses during CC [190,191]. In fact, the trial using infliximab was terminated early due to associations with increased fatigue and reduced quality of life in the intervention group of non-small cell lung cancer patients [190]. In individuals with advanced cancer who were receiving opioids, a 7-day course of methylprednisolone (16 mg/2x/d) resulted in reduced fatigue and appetite loss, leading to greater satisfaction in patients compared with participants in a placebo group [192].

5.4. Drug combinations

Multiple clinical trials have utilised a combination of pharmacological agents aiming to alleviate appetite losses in CC, with polypharmacy and drug interaction risks being particularly prominent in older patients [124]. A regimen of megestrol and thalidomide have been shown to be more effective in promoting appetite and weight gain than megestrol alone [193,194], although studies replacing thalidomide with celecoxib did not display more beneficial effects compared to controls [195,196]. Interestingly, a formula containing megestrol acetate, celecoxib, l-carnitine, and antioxidants vs. megestrol acetate alone for 4 months in patients with gynaecological cancers led to increased appetite, lean body mass, fatigue management, and global quality of life [197]. Another trial has shown a promising impact of formoterol (80 μ g/d) and megestrol acetate (480 mg/d) for up to 8 weeks in reducing lack of appetite scores in patients with advanced malignancy, although a control group was not involved [198]. Identical findings regarding higher appetite have been observed in trials incorporating megestrol acetate alongside another pharmacological agent compared to megestrol acetate alone, including olanzapine [199], but not combined with prepulsid [200]. An important focus for future research investigating the efficacy and effectiveness of available treatments is to explore the singular and combined effects of both pharmacological and non-pharmacological interventions.

6. Non-pharmacological means to address CC

6.1. Exercise

Exercise plays a significant role in the treatment of conditions leading to sarcopenia or cachexia, as loss of muscle mass is a key event in these processes [201]. For older cancer patients, preserving muscle mass through muscle-targeted pro-anabolic strategies is crucial for maintaining independence and quality of life, especially

following chemotherapy or during cancer treatment [202,203]. Recent findings in older healthy adults also suggest that an increase in lean mass is associated with a higher appetite, suggesting the maintenance or alleviation of muscle mass losses may be a potential strategy to combat CC [49]. Exercise not only reverses muscle loss and slows down the acceleration of sarcopenia, but it also enhances immune function, improves energy metabolism, and reduces cancer and tumour progression [204]. Older patients may need tailored exercise programmes considering their specific physical limitations and health status; evidence suggests a shift towards decentralised care, emphasising the development of rehabilitation programmes for older cancer patients before or after anti-cancer therapy [205]. Furthermore, and considering that fatigue, anorexia, and cachexia are some of the most prevalent symptom clusters that significantly worsen quality of life in cancer [206], any therapies to alleviate these symptoms can be hugely beneficial to cancer patients. For example, it is known that exercise can help with the restoration of physical functioning, improvement in quality of life, and mitigation of cancer-related fatigue, therefore, any attempts to engage in exercise pre-, peri-, and post-operatively can improve common cancer-related health outcomes such as anxiety, fatigue, physical functioning, and health-related quality of life [207]. More importantly, patients with low physical functioning and high fatigue are more likely to benefit with regards to fatigue and physical function from exercise interventions during and post-cancer treatment, while during treatment patients benefit with regards to muscle strength and quality of life regardless of baseline values [208]. Astonishingly, exercise is also three times more beneficial than pharmacological treatment for combating fatigue [209]. This is particularly relevant for older patients, who may be more prone to fatigue [210]. Previous systematic reviews have not confirmed the benefits of any type of exercise (i.e., aerobic or resistance exercise) to stimulate appetite in patients with cancer [211,212]. However, the above findings are not unexpected for two main reasons: a) appetite is more likely to be enhanced when an exercise intervention is likely to result in an increase in lean mass, as it has been shown in healthy older adults [49], while lean mass was not a key outcome measure in the majority of selected studies; and b) either aerobic or resistance exercise can acutely/temporarily suppress appetite [43,213,214] - a phenomenon called exercise-induced anorexia - thus to gain a more accurate picture of the impact of exercise on appetite in cancer patients, appetite data should be obtained across different timepoints and not in close proximity following the completion of exercise. More recent studies have shown that resistance exercise for 12 weeks and intensified physiotherapy consisting of endurance and muscle force exercise may attenuate appetite loss in gastrointestinal cancer patients [215] and after pancreatic cancer resection [216], respectively. However, in one trial, patients were quasi-randomised [215], raising questions about participants' allocation of treatment, while similarly to other studies lean mass was not a key outcome measure. Finally, the mechanistic link between intensified physiotherapy and appetite modulation in CC is currently unknown. It is also important to note that exercise is often part of a multimodal intervention approach combined with nutrition, pharmacological, and psychological strategies to improve outcomes in CC. Therefore, a comprehensive, synergistic approach to combining exercise with other treatments is anticipated to have a greater impact on preserving lean mass and improving clinical outcomes than exercise alone.

6.2. Nutrition

Nutritional interventions for cancer-related cachexia are dependent upon the defined stage of cachexia (pre-cachexia,

cachexia, or refractory cachexia), and its functional impact [217]. Unlike starvation, which can be addressed by refeeding, cachexia is less responsive to nutritional interventions, and current data suggests that it cannot be reversed by feeding alone. The catabolic state, inflammatory basis, and negative protein–energy balance of cachexia, combine to reduce Activities of Daily Living (ADL) and QoL [217]. Optimal nutritional interventions are therefore multimodal in nature, combined with exercise and pharmacotherapy to address muscle mass loss. The inclusion of dietary supplements, such as probiotics, has been identified as a promising area for further research. Studies have demonstrated that probiotics can reduce serum pro-inflammatory biomarkers, which may in turn alleviate some symptoms of CC and increase the tolerability of chemotherapy by reducing its side effects [218]. This highlights the potential of probiotics to improve treatment outcomes in CC by supporting both nutritional and therapeutic needs without adding side effects. For older patients, achieving the recommended targets for energy and protein intake in particular [219] can be challenging, necessitating more personalised and feasible dietary strategies.

CC is a disease-related sub-type of malnutrition, and decisions on nutritional intervention therefore benefit from utilising defined key criteria; a weight loss greater than 5 % in the previous 6 months or corresponding to 2–5% for patients with a BMI ≤ 20 kg/m² or with sarcopenia [217]. Alternatively, cachexia can also be defined through the Evans' criteria, accompanying weight loss of at least 5 % in 12 months or less (or BMI ≤ 20 kg/m²) and three of the following factors: decreased muscle strength; fatigue; anorexia; low fat-free mass index; abnormal biochemistry (increased CRP, IL-6; haemoglobin < 12 g/dL; serum albumin < 3.2 g/dL) [220]. The American Society of Clinical Oncology (ASCO) [221], European Society for Oncology (ESMO) Clinical Practice [222], and ESPEN practical guidelines [223] all recommend detailed nutritional assessment and screening as the basis for interventions. While nutritional requirements for CC are evolving, the focus remains on increasing or at least maintaining energy and protein intake. ESPEN suggests an energy intake of 25–30 kcal/kg/d and protein intake between 1 g/kg/day to 1.5 g/kg/d [223] with some advocating even higher protein intakes of 1.2–2 g/kg/d, especially for patients with high sarcopenia prevalence [222]. The above recommendations (i.e., energy intake ~ 30 kcal/d and protein intake ~ 1.2 g/d) have been integrated into the official guidance for the nutritional management of HNC, for example [55], but achieving these targets can be a challenging and lengthy process. Recent findings indicate that protein intakes below 1.2 g/kg may lead to muscle wasting in cancer patients, even when within recommended levels; in contrast, a mean intake above 1.4 g/kg has been associated with muscle maintenance during treatment in patients with high sarcopenia prevalence cancers [224], highlighting the need for higher protein intake thresholds and revised dietary guidelines for older cancer patients undergoing treatment. Additionally, the source of protein should be considered, as a combination of both animal- and plant-based proteins is suggested to provide the most beneficial amino acid profile for muscle anabolism in cancer patients [225]. Furthermore, emerging evidence suggests that dietary supplements, especially probiotics, may play a beneficial role in managing CC by modulating systemic inflammation and improving nutrient absorption, thus supporting the nutritional status of GI cancer patients [218]. In the context of CC, bioelectrical impedance analysis emerges as a valuable and practical tool for older adults for non-invasive assessment of body composition, offering insights into the effectiveness of interventions aimed at mitigating muscle wasting and improving nutritional status [226].

Nutritional interventions typically follow a staged nutrition approach, starting with dietary enrichment with energy and protein, then introducing oral nutritional supplements, with the understanding that this should be pre-emptive and initiated early in

the cachexia process [223]. However, one of the key recommendations is that dietary provisions that restrict energy intake should be avoided by cancer patients with or at risk of malnutrition should avoid dietary provisions that restrict energy intake. It is worth noting that protein, including both intact food and supplement sources, is the most satiating of all macronutrients [22,227–229] and may therefore suppress appetite and influence energy intake [22,228]. A number of mechanisms may be responsible for the satiating effects of protein [88,230,231], but it has recently been proposed that non-essential amino acids, which could activate orexin cells and reduce feeding via greater hypothalamic orexin activity [232], are partly responsible for the appetite-suppressing properties of protein. Therefore, dietary provisions, that may include supplementation with all or certain essential amino acids (EAAs), may be a more effective way for optimising daily and “per-meal” protein intake since a) the effective management of sarcopenia depends on the quantity and quality (i.e., EAAs) of protein consumed on a more refined ‘per meal’ basis [233], with the associated increase in plasma concentration of essential amino acids (EAAs) and L-leucine as key drivers for the increase in protein synthesis rates [234–236]; b) EAAs are not resulting in suppression of appetite to the same extent as protein and ultimately will not exacerbate energy deficiencies.

Indeed, anorexic patients with cancer following consumption of branched chain amino acids (BCAAs) (4.8 g/3x/d) showed a lower rate of anorexia in 7 days vs. baseline compared to placebo [237]. Furthermore, EAA-based supplementation may promote non-satiating properties and serve as an effective strategy to improve musculoskeletal health in individuals at high risk of anorexia and negative energy balance [25]. This has been confirmed by previous research, in which authors administered older women with an L-leucine-enriched EAA-based gel or bar supplement alongside a breakfast meal, which revealed higher appetite scores compared to the comparator group (received no intervention) [238], while the same group also showed that EAA supplements in gel format are superior to protein supplements since they resulted in an increase in both energy and protein intakes [228]. In another study, 36 g/d of protein supplementation for 12 weeks also exhibited greater appetite in patients with colorectal cancer compared to controls, however, the amino acid composition of the product was not mentioned [239].

While fish oil supplementation has shown promise in counteracting CC by enhancing appetite and caloric intake in CC [240–243], and when combined with protein supplementation [244,245], the results are mixed, and further research is needed to determine the minimum effective treatment duration. For instance, one study reported no significant differences in subjective appetite response with 1 g/d of fish oil compared to placebo, possibly due to a relatively short treatment duration (2 weeks) [246]. The aforementioned studies showed a benefit at 8 weeks, therefore, it is critical to consider a minimum effective treatment duration. Supplementary research has indicated significant benefits from baseline after 6 weeks [247], although another trial failed to assist appetite, utilising an identical duration [248]. The proposed mechanism for fish oil's appetite-stimulating effects involves the free fatty acid receptors FFA1 and FFA4, which play an important role in regulating energy metabolism [249]. Similarly, marine phospholipids have also demonstrated a significant benefit in stimulating appetite in patients with CC [250,251]. In contrast, other nutritional supplements, such as creatine monohydrate, have not shown any benefits in CC [252].

Clear guidance for a more aggressive nutritional approach using enteral nutrition (EN) is predicated on an inability to meet energy requirements, which can be defined as less than 50 % of the requirement for more than one week or only 50–75 % of the

requirement for more than two weeks [223]. With no evidence of proven benefits, ASCO Guidance strongly recommends that neither enteral nor parenteral nutrition be used in advanced cachexia [221]. This recommendation is consistent with the observation that while EN can improve body weight and energy intake, it does not enhance survival [253,254]. Nevertheless, a recent meta-analysis showed that EN may be a suitable strategy for CC patients aiming to improve their appetite profile [255].

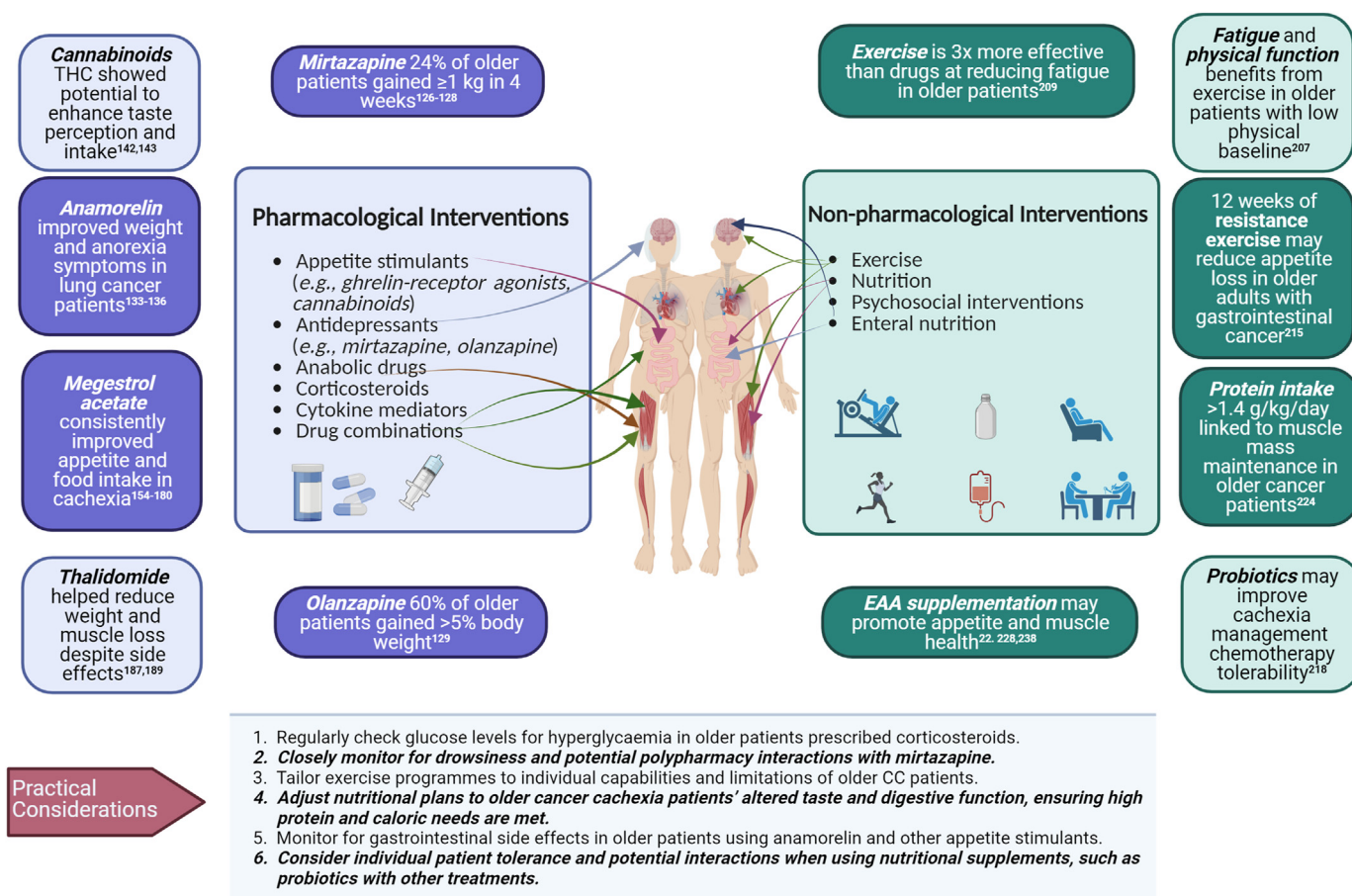
6.3. Psychosocial interventions

Psychosocial support in the form of nutritional counselling, cognitive behavioural therapy (CBT), and therapeutic counselling are all modes of enhancing the treatment of CC for the patient [256,257], exerting positive effects on appetite [258]. These interventions may be especially beneficial for older cancer patients, helping them cope with the psychological burden of cancer and cachexia and improve adherence to nutritional and treatment plans [259]. Mindfulness, motivational reframing, and relaxation techniques help achieve the patient's nutritional goal through a multi-pronged approach of dietitians, family members, and clinicians [121]. These help the patient's self-management goals to continue with plans that have been designed and agreed upon maintaining positive behaviour change to manage symptoms and provide feedback about their adherence. There are robust theories that underpin the processes employed to help a patient with CC cope and adapt to achieving their goals of nutrition and compliance with pharmacological treatments; these empower the individual to navigate their

journey of cancer as a whole, but also enable them to take control of the treatment and management required to address CC [260] (Fig. 3).

6.4. Strengths and limitations

This article provides a comprehensive overview of the molecular mechanisms underpinning CC, offering detailed insights into several pharmacological and non-pharmacological treatments, with a particular focus on older individuals. The multidisciplinary approach of the review, involving clinicians, practitioners, and researchers in both cancer and exercise physiology and nutrition disciplines, is a significant strength. The detailed exploration of molecular pathways also offers novel insights, enhancing our understanding of potential therapeutic strategies for CC. Nevertheless, there are several limitations to this review. The increased heterogeneity across studies, especially those relevant to specific types and stages of cancer, hinders the generalisability of our findings, potentially limiting the effectiveness of treatment strategies across the broad spectrum of CC. The rapid evolution of research in this area means that new studies may have emerged during the submission, peer review, and publication process of this article. Consequently, some of our conclusions might not fully reflect the most current developments in research treatments. The quality of the evidence from the included studies may vary since a systematic approach to individually assess and grade each study was not undertaken. This could affect the reliability of our conclusions. Due to the subjective nature of evaluating the impact of each treatment and the increased heterogeneity across studies, quantifying the



References cited in this figure are listed after those that have been cited in the text.

Fig. 3. Potential investigational, pharmacological, and non-pharmacological strategies for the treatment of CC.

effectiveness of individual treatments is challenging. Therefore, future meta-analyses may provide more objective measures of effectiveness amongst different options aimed at counteracting CC.

7. Conclusions

Cancer cachexia, a significant factor in cancer-related muscle wasting, requires a comprehensive treatment approach, especially in older patients. This approach should combine pharmacological options such as megestrol acetate, anamorelin, thalidomide, THC, and olanzapine alongside non-pharmacological strategies such as nutritional counselling, cognitive behavioural therapy, enteral nutrition, and essential amino acid supplementation. Emerging evidence on the efficacy of probiotics in enhancing gut microbiota and systemic inflammation control adds a promising dimension to these treatments. Our review highlights the central role of cytokines in the molecular pathways of cancer cachexia, especially in exacerbating muscle wasting and anorexia in older patients, which can guide the development of targeted therapeutic strategies. A critical focus remains on addressing protein and energy intake, particularly during periods of energy deficit. Future research should strive to refine appetite-stimulating drugs with fewer side effects and understand how nutritional factors can specifically enhance appetite or minimise suppression of appetite in older populations. Effectively managing cancer cachexia in this demographic is key to improving clinical outcomes, patient satisfaction, and the overall success of both pharmacological and nonpharmacological interventions.

Funding

This study received no funding.

Conflicts of interest

The authors declare no conflicts of interest.

Acknowledgments

Figures were created via [Biorender.com](https://www.biorender.com).

References

- [1] von Haehling S, Anker MS, Anker SD. Prevalence and clinical impact of cachexia in chronic illness in Europe, USA, and Japan: facts and numbers update 2016. Wiley Online Library; 2016. p. 507–9.
- [2] Ni J, Zhang L. Cancer cachexia: definition, staging, and emerging treatments. *Cancer Manag Res* 2020;12:5597.
- [3] Fearon K, Strasser F, Anker SD, Bosaeus I, Bruera E, Fainsinger RL, et al. Definition and classification of cancer cachexia: an international consensus. *Lancet Oncol* 2011;12:489–95.
- [4] Aoyagi T, Terracina KP, Raza A, Matsubara H, Takabe K. Cancer cachexia, mechanism and treatment. *World J Gastrointest Oncol* 2015;7:17.
- [5] Lim S, Brown JL, Washington TA, Greene NP. Development and progression of cancer cachexia: perspectives from bench to bedside. *Sport Med Health Sci* 2020;2:177–85.
- [6] Smith BD, Smith GL, Hurria A, Hortobagyi GN, Buchholz TA. Future of cancer incidence in the United States: burdens upon an aging, changing nation. *J Clin Oncol* 2009;27:2758–65.
- [7] Mayhew A, Amog K, Phillips S, Parise G, McNicholas P, De Souza R, et al. The prevalence of sarcopenia in community-dwelling older adults, an exploration of differences between studies and within definitions: a systematic review and meta-analyses. *Age Ageing* 2019;48:48–56.
- [8] Shafiee G, Keshkar A, Soltani A, Ahadi Z, Larijani B, Heshmat R. Prevalence of sarcopenia in the world: a systematic review and meta-analysis of general population studies. *J Diabetes Metab Disord* 2017;16:1–10.
- [9] Poisson J, Martinez-Tapia C, Heitz D, Geiss R, Albrand G, Falandry C, et al. Prevalence and prognostic impact of cachexia among older patients with cancer: a nationwide cross-sectional survey (NutriAgeCancer). *J Cachexia Sarcopenia Muscle* 2021;12:1477–88.
- [10] Ruan GT, Zhang Q, Zhang X, Tang M, Song MM, Zhang XW, et al. Geriatric Nutrition Risk Index: prognostic factor related to inflammation in elderly patients with cancer cachexia. *J Cachexia Sarcopenia Muscle* 2021;12:1969–82.
- [11] Youn S, Reif R, Chu MP, Smylie M, Walker J, Eurich DT, et al. Myosteatosis is prognostic in metastatic melanoma treated with nivolumab. *Clin Nutr ESPEN* 2021;42:348–53.
- [12] Loosen SH, van den Bosch V, Gorgulho J, Schulze-Hagen M, Kandler J, Jördens MS, et al. Progressive sarcopenia correlates with poor response and outcome to immune checkpoint inhibitor therapy. *J Clin Med* 2021;10.
- [13] Takada K, Yoneshima Y, Tanaka K, Okamoto I, Shimokawa M, Wakasu S, et al. Clinical impact of skeletal muscle area in patients with non-small cell lung cancer treated with anti-PD-1 inhibitors. *J Cancer Res Clin Oncol* 2020;146:1217–25.
- [14] Williams GR, Dunne RF, Giri S, Shachar SS, Caan BJ. Sarcopenia in the older adult with cancer. *J Clin Oncol* 2021;39:2068–78.
- [15] Budreviciute A, Damiati S, Sabir DK, Onder K, Schuller-Goetzburg P, Plakys G, et al. Management and prevention strategies for non-communicable diseases (NCDs) and their risk factors. *Front Public Health* 2020:788.
- [16] Sung H, Ferlay J, Siegel RL, Laversanne M, Soerjomataram I, Jemal A, et al. Global cancer statistics 2020: GLOBOCAN estimates of incidence and mortality worldwide for 36 cancers in 185 countries. *CA A Cancer J Clin* 2021;71:209–49.
- [17] Tamagawa H, Aoyama T, Iguchi K, Fujikawa H, Sawazaki S, Sato T, et al. Preoperative evaluation of skeletal muscle mass in the risk assessment for the short-term outcome of elderly colorectal cancer patients undergoing colectomy. *Mol Clin Oncol* 2018;8:779–84.
- [18] Limpawattana P, Theerakulpiset D, Wirasorn K, Sookprasert A, Khuntikeo N, Chindaprasirt J. The impact of skeletal muscle mass on survival outcome in biliary tract cancer patients. *PLoS One* 2018;13:e0204985.
- [19] Vellas B, Fielding RA, Bens C, Bernabei R, Cawthon PM, Cederholm T, et al. Implications of ICD-10 for sarcopenia clinical practice and clinical trials: report by the international conference on frailty and sarcopenia research task force. *J Frailty Aging* 2018;7:2–9.
- [20] Lees MJ, Wilson OJ, Hind K, Ispoglou T. Muscle quality as a complementary prognostic tool in conjunction with sarcopenia assessment in younger and older individuals. *Eur J Appl Physiol* 2019;119:1171–81.
- [21] Cruz-Jentoft AJ, Bahat G, Bauer J, Boirie Y, Bruyere O, Cederholm T, et al. Sarcopenia: revised European consensus on definition and diagnosis. *Age Ageing* 2019;48:16–31.
- [22] Ispoglou T, Witard OC, Duckworth LC, Lees MJ. The efficacy of essential amino acid supplementation for augmenting dietary protein intake in older adults: implications for skeletal muscle mass, strength and function. *Proc Nutr Soc* 2021;80:230–42.
- [23] Vergara-Fernandez O, Trejo-Avila M, Salgado-Nesme N. Sarcopenia in patients with colorectal cancer: a comprehensive review. *World J Clin Case* 2020;8:1188.
- [24] Ali S, Garcia JM. Sarcopenia, cachexia and aging: diagnosis, mechanisms and therapeutic options—a mini-review. *Gerontology* 2014;60:294–305.
- [25] Ispoglou T, Witard OC, Duckworth LC, Lees MJ. The efficacy of essential amino acid supplementation for augmenting dietary protein intake in older adults: implications for skeletal muscle mass, strength and function. *Proc Nutr Soc* 2021;80:230–42.
- [26] Murphy CH, Roche HM. Nutrition and physical activity countermeasures for sarcopenia: time to get personal? *Nutr Bull* 2018;43:374–87.
- [27] Johnson KO, Shannon OM, Matu J, Holliday A, Ispoglou T, Deighton K. Differences in circulating appetite-related hormone concentrations between younger and older adults: a systematic review and meta-analysis. *Aging Clin Exp Res* 2020;32:1233–44.
- [28] Paillaud E, Caillet P, Campillo B, Bories PN. Increased risk of alteration of nutritional status in hospitalized elderly patients with advanced cancer. *J Nutr Health Aging* 2006;10:91–5.
- [29] Ney DM, Weiss JM, Kind AJ, Robbins J. Senescent swallowing: impact, strategies, and interventions. *Nutr Clin Pract* 2009;24:395–413.
- [30] Drummond MJ, Miyazaki M, Dreyer HC, Pennings B, Dhanani S, Volpi E, et al. Expression of growth-related genes in young and older human skeletal muscle following an acute stimulation of protein synthesis. *J Appl Physiol* 2009;106:1403–11.
- [31] Griffin SO, Jones JA, Brunson D, Griffin PM, Bailey WD. Burden of oral disease among older adults and implications for public health priorities. *Am J Publ Health* 2012;102:411–8.
- [32] Von Haehling S, Morley JE, Anker SD. An overview of sarcopenia: facts and numbers on prevalence and clinical impact. *J Cachexia Sarcopenia Muscle* 2010;1:129–33.
- [33] Vagnildhaug OM, Brunelli C, Hjermstad MJ, Strasser F, Baracos V, Wilcock A, et al. A prospective study examining cachexia predictors in patients with incurable cancer. *BMC Palliat Care* 2019;18:1–10.
- [34] Inui A. Cancer anorexia-cachexia syndrome: current issues in research and management. *CA A Cancer J Clinicians* 2002;52:72–91.
- [35] Muscaritoli M, Anker S, Argilés J, Aversa Z, Bauer J, Biolo G, et al. Consensus definition of sarcopenia, cachexia and pre-cachexia: joint document elaborated by Special Interest Groups (SIG) “cachexia-anorexia in chronic wasting diseases” and “nutrition in geriatrics”. *Clin Nutr* 2010;29:154–9.
- [36] Vanhoutte G, van de Wiel M, Wouters K, Sels M, Bartolomeeussen L, De Keersmaecker S, et al. Cachexia in cancer: what is in the definition? *BMJ Open Gastroenterology* 2016;3:e000097.

- [37] Von Haehling S, Anker SD. Treatment of cachexia: an overview of recent developments. *Int J Cardiol* 2015;184:736–42.
- [38] Ezeoke CC, Morley JE. Pathophysiology of anorexia in the cancer cachexia syndrome. *J Cachexia Sarcopenia Muscle* 2015;6:287–302.
- [39] Del Fabbro E, Orr TA, Stella SM. Practical approaches to managing cancer patients with weight loss. *Curr Opin Support Palliat Care* 2017;11:272–7.
- [40] Muscaritoli M, Lucia S, Farcomeni A, Lorusso V, Saracino V, Barone C, et al. Prevalence of malnutrition in patients at first medical oncology visit: the PreMiO study. *Oncotarget* 2017;8:79884.
- [41] Paddon-Jones D, Leidy H. Dietary protein and muscle in older persons. *Curr Opin Clin Nutr Metab Care* 2014;17:5.
- [42] Mollahosseini M, Shab-Bidar S, Rahimi MH, Djafarian K. Effect of whey protein supplementation on long and short term appetite: a meta-analysis of randomized controlled trials. *Clin Nutr ESPEN* 2017;20:34–40.
- [43] Johnson KO, Mistry N, Holliday A, Ispoglou T. The effects of an acute resistance exercise bout on appetite and energy intake in healthy older adults. *Appetite* 2021;164:105271.
- [44] Landi F, Calvani R, Tosato M, Martone AM, Ortolani E, Saveria G, et al. Anorexia of aging: risk factors, consequences, and potential treatments. *Nutrients* 2016;8:69.
- [45] Merchant RA, Woo J, Morley J. Anorexia of ageing: pathway to frailty and sarcopenia. Springer; 2021. p. 1–3.
- [46] Hutton JL, Martin L, Field CJ, Wismer WV, Bruera ED, Watanabe SM, et al. Dietary patterns in patients with advanced cancer: implications for anorexia-cachexia therapy. *Am J Clin Nutr* 2006;84:1163–70.
- [47] Argilés JM, Busquets S, Stemmler B, López-Soriano FJ. Cancer cachexia: understanding the molecular basis. *Nat Rev Cancer* 2014;14:754–62.
- [48] Giannos P, Prokopidis K, Church DD, Kirk B, Morgan PT, Ni Lochlainn M, et al. Associations of bioavailable serum testosterone with cognitive function in older men: Results from the National Health and Nutrition Examination Survey. *J Gerontol A Biol. Sci. Med. Sci.* 2023;78:151–7.
- [49] Johnson KO, Holliday A, Mistry N, Cunniffe A, Howard K, Stanger N, et al. An increase in fat-free mass is associated with higher appetite and energy intake in older adults: a randomised control trial. *Nutrients* 2021;13.
- [50] Prokopidis K, Giannos P, Witard OC, Peckham D, Ispoglou T. Aberrant mitochondrial homeostasis at the crossroad of musculoskeletal ageing and non-small cell lung cancer. *PLoS One* 2022;17:e0273766.
- [51] Grossberg AJ, Chamchod S, Fuller CD, Mohamed AS, Heukelum J, Eichelberger H, et al. Association of body composition with survival and locoregional control of radiotherapy-treated head and neck squamous cell carcinoma. *JAMA Oncol* 2016;2:782–9.
- [52] Martin L, Muscaritoli M, Bourdel-Marchasson I, Kubrak C, Laird B, Gagnon B, et al. Diagnostic criteria for cancer cachexia: reduced food intake and inflammation predict weight loss and survival in an international, multi-cohort analysis. *J Cachexia Sarcopenia Muscle* 2021;12:1189–202.
- [53] Bossi P, Delrio P, Mascheroni A, Zanetti M. The spectrum of malnutrition/cachexia/sarcopenia in oncology according to different cancer types and settings: a narrative review. *Nutrients* 2021;13:1980.
- [54] Danaei LV, Babic A, Rosenthal MH, Dennstedt EA, Muir A, Lien EC, et al. Altered exocrine function can drive adipose wasting in early pancreatic cancer. *Nature* 2018;558:600–4.
- [55] Talwar B, Donnelly R, Skelly R, Donaldson M. Nutritional management in head and neck cancer: United Kingdom National Multidisciplinary Guidelines. *J Laryngol Otol* 2016;130:S32–40.
- [56] Orell-Kotikangas H, Österlund P, Mäkitie O, Saarihahti K, Ravasco P, Schwab U, et al. Cachexia at diagnosis is associated with poor survival in head and neck cancer patients. *Acta Otolaryngol* 2017;137:778–85.
- [57] Jones AJ, Davis KP, Novinger LJ, Bonetto A, Mantravadi AV, Sim MW, et al. Postoperative consequences of cancer cachexia after head and neck free flap reconstruction. *Head & Neck*; 2022.
- [58] Mehanna HM, Moledina J, Travis J. Refeeding syndrome: what it is, and how to prevent and treat it. *BMJ* 2008;336:1495–8.
- [59] Atherton P, Smith K. Role of protein turnover in adaptation. *J Physiol* 2012;402.
- [60] Londhe P, Guttridge DC. Inflammation induced loss of skeletal muscle. *Bone* 2015;80:131–42.
- [61] Rausch V, Sala V, Penna F, Porporato PE, Ghigo A. Understanding the common mechanisms of heart and skeletal muscle wasting in cancer cachexia. *Oncogenesis* 2021;10:1–13.
- [62] Francaux M, Deldicque L. Exercise and the control of muscle mass in human. *Pflug Arch Eur J Physiol* 2019;471:397–411.
- [63] Basisty N, Meyer JG, Schilling B. Protein turnover in aging and longevity. *Proteomics* 2018;18:1700108.
- [64] Murton A, Constantin D, Greenhaff P. The involvement of the ubiquitin proteasome system in human skeletal muscle remodelling and atrophy. *Biochim Biophys Acta (BBA) - Mol Basis Dis* 2008;1782:730–43.
- [65] Hyatt HW, Powers SK. The role of calpains in skeletal muscle remodeling with exercise and inactivity-induced atrophy. *Int J Sports Med* 2020;41:994–1008.
- [66] Glick D, Barth S, Macleod KF. Autophagy: cellular and molecular mechanisms. *J Pathol* 2010;221:3–12.
- [67] He C, Klionsky DJ. Regulation mechanisms and signaling pathways of autophagy. *Annu Rev Genet* 2009;43:67–93.
- [68] Mizushima N, Komatsu M. Autophagy: renovation of cells and tissues. *Cell* 2011;147:728–41.
- [69] Yoshida T, Delafontaine P. Mechanisms of IGF-1-mediated regulation of skeletal muscle hypertrophy and atrophy. *Cells* 2020;9:1970.
- [70] Bonetto A, Aydogdu T, Jin X, Zhang Z, Zhan R, Puzis L, et al. JAK/STAT3 pathway inhibition blocks skeletal muscle wasting downstream of IL-6 and in experimental cancer cachexia. *Am J Physiol Endocrinol Metabol* 2012;303:E410–21.
- [71] Cai X, Cao C, Li J, Chen F, Zhang S, Liu B, et al. Inflammatory factor TNF- α promotes the growth of breast cancer via the positive feedback loop of TNFR1/NF- κ B (and/or p38)/p-STAT3/HBXIP/TNFR1. *Oncotarget* 2017;8:58338.
- [72] Dai C-J, Cao Y-T, Huang F, Wang Y-G. Multiple roles of mothers against decapentaplegic homolog 4 in tumorigenesis, stem cells, drug resistance, and cancer therapy. *World J Stem Cell* 2022;14:41.
- [73] Schakman O, Kalista S, Barbé C, Loumaye A, Thissen J-P. Glucocorticoid-induced skeletal muscle atrophy. *Int J Biochem Cell Biol* 2013;45:2163–72.
- [74] Goodman CA, McNally RM, Hoffmann FM, Hornberger TA. Smad3 induces atrogen-1, inhibits mTOR and protein synthesis, and promotes muscle atrophy in vivo. *Mol Endocrinol* 2013;27:1946–57.
- [75] Smith IJ, Aversa Z, Hasselgren PO, Pacelli F, Rosa F, Doglietto GB, et al. Calpain activity is increased in skeletal muscle from gastric cancer patients with no or minimal weight loss. *Muscle Nerve* 2011;43:410–4.
- [76] Stephens NA, Gallagher IJ, Rooyackers O, Skipworth RJ, Tan BH, Marstrand T, et al. Using transcriptomics to identify and validate novel biomarkers of human skeletal muscle cancer cachexia. *Genome Med* 2010;2:1–12.
- [77] Cosper PF, Leinwand LA. Cancer causes cardiac atrophy and autophagy in a sexually dimorphic Manner Cancer causes cardiac atrophy. *Cancer Res* 2011;71:1710–20.
- [78] Webster JM, Kempen L, Hardy RS, Langen RCJ. Inflammation and skeletal muscle wasting during cachexia. *Front Physiol* 2020;11:597675.
- [79] Zhang Q, Song M-M, Zhang X, Ding J-S, Ruan G-T, Zhang X-W, et al. Association of systemic inflammation with survival in patients with cancer cachexia: results from a multicentre cohort study. *J Cachexia Sarcopenia Muscle* 2021;12:1466–76.
- [80] Abbass T, Dolan RD, Laird BJ, McMillan DC. The relationship between imaging-based body composition analysis and the systemic inflammatory response in patients with cancer: a systematic review. *Cancers* 2019;11:1304.
- [81] Pavai DR, Patton R, McDonald J, Skipworth RJE, Gallagher IJ, Laird BJ, et al. A systematic review examining the relationship between cytokines and cachexia in incurable cancer. *J Cachexia Sarcopenia Muscle* 2022;13:824–38.
- [82] Mantovani G, Macciò A, Madeddu C, Serpe R, Antoni G, Massa E, et al. Phase II nonrandomized study of the efficacy and safety of COX-2 inhibitor celecoxib on patients with cancer cachexia. *J Mol Med* 2010;88:85–92.
- [83] Solheim TS, Laird BJA, Balstad TR, Stene GB, Bye A, Johns N, et al. A randomized phase II feasibility trial of a multimodal intervention for the management of cachexia in lung and pancreatic cancer. *J Cachexia Sarcopenia Muscle* 2017;8:778–88.
- [84] Nishikawa H, Goto M, Fukunishi S, Asai A, Nishiguchi S, Higuchi K. Cancer cachexia: its mechanism and clinical significance. *Int J Mol Sci* 2021;22:8491.
- [85] Morley JE, Silver AJ. Anorexia in the elderly. *Neurobiol Aging* 1988;9:9–16.
- [86] Giezenaar C, Chapman I, Luscombe-Marsh N, Feinle-Bisset C, Horowitz M, Soenen S. Ageing is associated with decreases in appetite and energy intake—a meta-analysis in healthy adults. *Nutrients* 2016;8:28.
- [87] Cox NJ, Morrison L, Ibrahim K, Robinson SM, Sayer AA, Roberts HC. New horizons in appetite and the anorexia of ageing. *Age Ageing* 2020;49:526–34.
- [88] Tremblay A, Bellisle F. Nutrients, satiety, and control of energy intake. *Appl Physiol Nutr Metabol* 2015;40:971–9.
- [89] Akimoto S, Miyasaka K. Age-associated changes of appetite-regulating peptides. *Geriatr Gerontol Int* 2010;10:S107–9.
- [90] Benelam B. Satiety and the anorexia of ageing. *Br J Community Nurs* 2009;14:332–5.
- [91] Di Francesco V, Pellizzari L, Corrà L, Fontana G. The anorexia of aging: impact on health and quality of life. *Geriatric Care* 2018;4.
- [92] Roberts SB, Rosenberg I. Nutrition and aging: changes in the regulation of energy metabolism with aging. *Physiol Rev* 2006;86:651–67.
- [93] Methven L, Allen VJ, Withers CA, Gosney MA. Ageing and taste. *Proc Nutr Soc* 2012;71:556–65.
- [94] Jacobson A, Green E, Murphy C. Age-related functional changes in gustatory and reward processing regions: an fMRI study. *Neuroimage* 2010;53:602–10.
- [95] Laviano A, Russo M, Freda F, Rossi-Fanelli F. Neurochemical mechanisms for cancer anorexia. *Nutrition* 2002;18:100–5.
- [96] van Norren K, Dwarkasing JT, Witkamp RF. The role of hypothalamic inflammation, the hypothalamic–pituitary–adrenal axis and serotonin in the cancer anorexia–cachexia syndrome. *Curr Opin Clin Nutr Metab Care* 2017;20:396–401.
- [97] Garcia JM, Garcia-Touza M, Hijazi RA, Taffet G, Epner D, Mann D, et al. Active ghrelin levels and active to total ghrelin ratio in cancer-induced cachexia. *J Clin Endocrinol Metabol* 2005;90:2920–6.
- [98] Otto B, Cuntz U, Ea Fruehauf, Wawarta R, Folwaczny C, Riepl R, et al. Weight gain decreases elevated plasma ghrelin concentrations of patients with anorexia nervosa. *Eur J Endocrinol* 2001;145:R5–9.
- [99] Elliott JA, Docherty NG, Haag J, Eckhardt H-G, Ravi N, Reynolds JV, et al. Attenuation of satiety gut hormones increases appetitive behavior after

- curative esophagectomy for esophageal cancer. *Am J Clin Nutr* 2019;109:335–44.
- [100] Yeom E, Shin H, Yoo W, Jun E, Kim S, Hong SH, et al. Tumour-derived Dilp8/INSL3 induces cancer anorexia by regulating feeding neuropeptides via Lgr3/8 in the brain. *Nat Cell Biol* 2021;23:172–83.
- [101] Bestea L, Briard E, Carcaud J, Sandoz J-C, Velarde R, Giurfa M, et al. The short neuropeptide F (sNPF) promotes the formation of appetitive visual memories in honey bees. *Biol Lett* 2022;18:20210520.
- [102] Root CM, Ko KI, Jafari A, Wang JW. Presynaptic facilitation by neuropeptide signaling mediates odor-driven food search. *Cell* 2011;145:133–44.
- [103] Silva VR, Micheletti TO, Pimentel GD, Katashima CK, Lenhare L, Morari J, et al. Hypothalamic S1P/S1PR1 axis controls energy homeostasis. *Nat Commun* 2014;5:1–15.
- [104] Gao Q, Mezei G, Nie Y, Rao Y, Choi CS, Bechmann I, et al. Anorectic estrogen mimics leptin's effect on the rewiring of melanocortin cells and Stat3 signaling in obese animals. *Nat Med* 2007;13:89–94.
- [105] Johnen H, Lin S, Kuffner T, Brown DA, Tsai VW-W, Bauskin AR, et al. Tumor-induced anorexia and weight loss are mediated by the TGF- β superfamily cytokine MIC-1. *Nat Med* 2007;13:1333–40.
- [106] Campos CA, Bowen AJ, Han S, Wisse BE, Palmiter RD, Schwartz MW. Cancer-induced anorexia and malaise are mediated by CGRP neurons in the parabrachial nucleus. *Nat Neurosci* 2017;20:934–42.
- [107] Campos CA, Bowen AJ, Schwartz MW, Palmiter RD. Parabrachial CGRP neurons control meal termination. *Cell Metab* 2016;23:811–20.
- [108] Feng P, Jyotaki M, Kim A, Chai J, Simon N, Zhou M, et al. Regulation of bitter taste responses by tumor necrosis factor. *Brain Behav Immun* 2015;49:32–42.
- [109] Jetté ME, Clary MS, Prager JD, Finger TE. Chemical receptors of the arytenoid: a comparison of human and mouse. *Laryngoscope* 2020;130:423–30.
- [110] Tsai V, Lin S, Brown D, Salis A, Breit S. Anorexia–cachexia and obesity treatment may be two sides of the same coin: role of the TGF- β superfamily cytokine MIC-1/GDF15. *Int J Obes* 2016;40:193–7.
- [111] Negishi K, Hoshida S, Shimpo M, Kario K. Growth differentiation factor 15 predicts cancer death in patients with cardiovascular risk factors: the J-HOP study. *Front Cardiovasc Med* 2021;8:660317.
- [112] Al-Sawaf O, Weiss J, Skrzypski M, Lam JM, Karasaki T, Zambrana F, et al. Body composition and lung cancer-associated cachexia in TRACERx. *Nat Med* 2023;29:846–58.
- [113] Suzuki H, Mitsunaga S, Ikeda M, Aoyama T, Yoshizawa K, Yoshimatsu H, et al. Clinical and tumor characteristics of patients with high serum levels of growth differentiation factor 15 in advanced pancreatic cancer. *Cancers* 2021;13.
- [114] Olson B, Diba P, Korzun T, Marks DL. Neural mechanisms of cancer cachexia. *Cancers* 2021;13.
- [115] Feng P, Zhao H, Chai J, Huang L, Wang H. Expression and secretion of TNF- α in mouse taste buds: a novel function of a specific subset of type II taste cells. 2012.
- [116] Feng P, Chai J, Zhou M, Simon N, Huang L, Wang H. Interleukin-10 is produced by a specific subset of taste receptor cells and critical for maintaining structural integrity of mouse taste buds. *J Neurosci* 2014;34:2689–701.
- [117] Windle A, Burke D, Ispoglou T. The feasibility of an essential amino acid supplement for addressing protein and energy deficiencies in postoperative elective and emergency colorectal patients. 13th international conference on frailty & sarcopenia research. Toulouse: Springer; 2023. p. S78-S. Supplement 1 P8/5 ed.
- [118] Pourhassan M, Babel N, Sieske L, Westhoff TH, Wirth R. Longitudinal changes of cytokines and appetite in older hospitalized patients. *Nutrients* 2021;13:2508.
- [119] Arends J, Bachmann P, Baracos V, Barthelemy N, Bertz H, Bozzetti F, et al. ESPEN guidelines on nutrition in cancer patients. *Clin Nutr* 2017;36:11–48.
- [120] Klotz U. Pharmacokinetics and drug metabolism in the elderly. *Drug Metabol Rev* 2009;41:67–76.
- [121] Hopkinson JB. The psychosocial components of multimodal interventions offered to people with cancer cachexia: a scoping review. *Asia-Pacific J Oncol Nurs* 2021;8:450–61.
- [122] Anttila SA, Leinonen EV. A review of the pharmacological and clinical profile of mirtazapine. *CNS Drug Rev* 2001;7:249–64.
- [123] Cankurtaran ES, Ozalp E, Soygur H, Akbiyik DI, Turhan L, Alkis N. Mirtazapine improves sleep and lowers anxiety and depression in cancer patients: superiority over imipramine. *Support Care Cancer* 2008;16:1291–8.
- [124] Maher RL, Hanlon J, Hajjar ER. Clinical consequences of polypharmacy in elderly. *Exp Opin Drug Saf* 2014;13:57–65.
- [125] Kumar N, Barai S, Gambhir S, Rastogi N. Effect of mirtazapine on gastric emptying in patients with cancer-associated anorexia. *Indian J Palliat Care* 2017;23:335.
- [126] Riechelmann RP, Burman D, Tannock IF, Rodin G, Zimmermann C. Phase II trial of mirtazapine for cancer-related cachexia and anorexia. *Am J Hosp Palliat Med* 2010;27:106–10.
- [127] Hunter CN, Abdel-Aal HH, Elshierief WA, Farag DE, Riad NM, Alsirafy SA. Mirtazapine in cancer-associated anorexia and cachexia: a double-blind placebo-controlled randomized trial. *J Pain Symptom Manag* 2021;62:1207–15.
- [128] Theobald DE, Kirsh KL, Holtsclaw E, Donaghy K, Passik SD. An open-label, crossover trial of mirtazapine (15 and 30 mg) in cancer patients with pain and other distressing symptoms. *J Pain Symptom Manag* 2002;23:442–7.
- [129] Sandhya L, Devi Sreenivasan N, Goenka L, Dubashi B, Kayal S, Solaiappan M, et al. Randomized double-blind placebo-controlled study of olanzapine for chemotherapy-related anorexia in patients with locally advanced or metastatic gastric, hepatopancreaticobiliary, and lung cancer. *J Clin Oncol* 2023;41:2617–27.
- [130] Landi F, Calvani R, Tosato M, Martone AM, Ortolani E, Saveria G, et al. Anorexia of aging: risk factors, consequences, and potential treatments. *Nutrients* 2016;8.
- [131] Lundholm K, Gunnebo L, Körner U, Iresjö BM, Engström C, Hyltander A, et al. Effects by daily long term provision of ghrelin to unselected weight-losing cancer patients: a randomized double-blind study. *Cancer* 2010;116:2044–52.
- [132] Hiura Y, Takiguchi S, Yamamoto K, Takahashi T, Kurokawa Y, Yamasaki M, et al. Effects of ghrelin administration during chemotherapy with advanced esophageal cancer patients: a prospective, randomized, placebo-controlled phase 2 study. *Cancer* 2012;118:4785–94.
- [133] Takayama K, Katakami N, Yokoyama T, Atagi S, Yoshimori K, Kagamu H, et al. Anamorelin (ONO-7643) in Japanese patients with non-small cell lung cancer and cachexia: results of a randomized phase 2 trial. *Support Care Cancer* 2016;24:3495–505.
- [134] Katakami N, Uchino J, Yokoyama T, Naito T, Kondo M, Yamada K, et al. Anamorelin (ONO-7643) for the treatment of patients with non-small cell lung cancer and cachexia: results from a randomized, double-blind, placebo-controlled, multicenter study of Japanese patients (ONO-7643-04). *Cancer* 2018;124:606–16.
- [135] Temel JS, Abernethy AP, Curott DC, Friend J, Duus EM, Yan Y, et al. Anamorelin in patients with non-small-cell lung cancer and cachexia (ROMANA 1 and ROMANA 2): results from two randomised, double-blind, phase 3 trials. *Lancet Oncol* 2016;17:519–31.
- [136] Garcia JM, Friend J, Allen S. Therapeutic potential of anamorelin, a novel, oral ghrelin mimetic, in patients with cancer-related cachexia: a multicenter, randomized, double-blind, crossover, pilot study. *Support Care Cancer* 2013;21:129–37.
- [137] Naito T, Uchino J, Kojima T, Matano Y, Minato K, Tanaka K, et al. A multicenter, open-label, single-arm study of anamorelin (ONO-7643) in patients with cancer cachexia and low body mass index. *Cancer* 2022;128:2025–35.
- [138] Raghavendra V, Kulkarni SK. Melatonin reversal of DOI-induced hypophagia in rats; possible mechanism by suppressing 5-HT_{2A} receptor-mediated activation of HPA axis. *Brain Res* 2000;860:112–8.
- [139] Del Fabbro E, Dev R, Hui D, Palmer L, Bruera E. Effects of melatonin on appetite and other symptoms in patients with advanced cancer and cachexia: a double-blind placebo-controlled trial. *J Clin Oncol* 2013;31:1271.
- [140] Osei-Hyiaman D. Endocannabinoid system in cancer cachexia. *Curr Opin Clin Nutr Metab Care* 2007;10:443–8.
- [141] Minerbi A, Häuser W, Fitzcharles M-A. Medical cannabis for older patients. *Drugs Aging* 2019;36:39–51.
- [142] Strasser F, Luftner D, Possinger K, Ernst G, Ruhstaller T, Meissner W, et al. Comparison of orally administered cannabis extract and delta-9-tetrahydrocannabinol in treating patients with cancer-related anorexia-cachexia syndrome: a multicenter, phase III, randomized, double-blind, placebo-controlled clinical trial from the Cannabis-In-Cachexia-Study-Group. *J Clin Oncol* 2006;24:3394–400.
- [143] Brisbois T, De Kock I, Watanabe S, Mirhosseini M, Lamoureux D, Chasen M, et al. Delta-9-tetrahydrocannabinol may palliate altered chemosensory perception in cancer patients: results of a randomized, double-blind, placebo-controlled pilot trial. *Ann Oncol* 2011;22:2086–93.
- [144] Turcott JG, del Rocio Guillen Núñez M, Flores-Estrada D, Oñate-Ocaña LF, Zatarain-Barrón ZL, Barrón F, et al. The effect of nabilone on appetite, nutritional status, and quality of life in lung cancer patients: a randomized, double-blind clinical trial. *Support Care Cancer* 2018;26:3029–38.
- [145] Côté M, Trudel M, Wang C, Fortin A. Improving quality of life with nabilone during radiotherapy treatments for head and neck cancers: a randomized double-blind placebo-controlled trial. *Ann Otol Rhinol Laryngol* 2016;125:317–24.
- [146] Razmovski-Naumovski V, Luckett T, Amgarth-Duff I, Agar MR. Efficacy of medicinal cannabis for appetite-related symptoms in people with cancer: a systematic review. *Palliat Med* 2022;02692163221083437.
- [147] Darnton S, Zgainski B, Grenier I, Allister K, Hiller L, McManus K, et al. The use of an anabolic steroid (nandrolone decanoate) to improve nutritional status after esophageal resection for carcinoma. *Dis Esophagus* 1999;12:283–8.
- [148] Patané FG, Liberto A, Maria Maglitta AN, Malandrino P, Esposito M, Amico F, et al. Nandrolone decanoate: use, abuse and side effects. *Medicina* 2020;56:606.
- [149] Advani SM, Advani PG, VonVille HM, Jafri SH. Pharmacological management of cachexia in adult cancer patients: a systematic review of clinical trials. *BMC Cancer* 2018;18:1–15.
- [150] Lundholm K, Korner U, Gunnebo L, Sixt-Ammilon P, Fouladi M, Daneryd P, et al. Inpatient treatment in cancer cachexia: effects on survival, metabolism, and physical functioning. *Clin Cancer Res* 2007;13:2699–706.
- [151] Downer S, Joel S, Allbright A, Plant H, Stubbs L, Talbot D, et al. A double blind placebo controlled trial of medroxyprogesterone acetate (MPA) in cancer cachexia. *Br J Cancer* 1993;67:1102–5.
- [152] Simons JPF, Schols AM, Hoefnagels JM, Westerterp KR, Velde GPT, Wouters EF. Effects of medroxyprogesterone acetate on food intake, body composition, and resting energy expenditure in patients with advanced,

- nonhormone-sensitive cancer: a randomized, placebo-controlled trial. *Cancer: Interdisciplinary International Journal of the American Cancer Society* 1998;82:553–60.
- [153] Dobs AS, Boccia RV, Croot CC, Gabrail NY, Dalton JT, Hancock ML, et al. Effects of enobosarm on muscle wasting and physical function in patients with cancer: a double-blind, randomised controlled phase 2 trial. *Lancet Oncol* 2013;14:335–45.
- [154] Currow DC, Glare P, Louw S, Martin P, Clark K, Fazekas B, et al. A randomised, double blind, placebo-controlled trial of megestrol acetate or dexamethasone in treating symptomatic anorexia in people with advanced cancer. *Sci Rep* 2021;11:1–10.
- [155] Cuvelier GD, Baker TJ, Peddie EF, Casey LM, Lambert PJ, Distefano DS, et al. A randomized, double-blind, placebo-controlled clinical trial of megestrol acetate as an appetite stimulant in children with weight loss due to cancer and/or cancer therapy. *Pediatr Blood Cancer* 2014;61:672–9.
- [156] Chow P, Machin D, Chen Y, Zhang X, Win K, Hoang H, et al. Randomised double-blind trial of megestrol acetate vs placebo in treatment-naïve advanced hepatocellular carcinoma. *Br J Cancer* 2011;105:945–52.
- [157] Tomiska M, Tomiskova M, Salajka F, Adam Z, Vorlicek J. Palliative treatment of cancer anorexia with oral suspension of megestrol acetate. *Neoplasma* 2003;50:227–33.
- [158] Ulutin HC, Arpaci F, Pak Y. Megestrol acetate for cachexia and anorexia in advanced non-small cell lung cancer: a randomized study comparing two different doses. *Tumori Journal* 2002;88:277–80.
- [159] Nelson KA, Walsh D, Hussein M. A phase II study of low-dose megestrol acetate using twice-daily dosing for anorexia in nonhormonally dependent cancer. *Am J Hosp Palliat Med* 2002;19:206–10.
- [160] McQuellon RP, Moose DB, Russell GB, Case LD, Greven K, Stevens M, et al. Supportive use of megestrol acetate (Megace) with head/neck and lung cancer patients receiving radiation therapy. *Int J Radiat Oncol Biol Phys* 2002;52:1180–5.
- [161] Westman G, Bergman B, Albertsson M, Kadar L, Gustavsson G, Thaning L, et al. Megestrol acetate in advanced, progressive, hormone-insensitive cancer. Effects on the quality of life: a placebo-controlled, randomised, multicentre trial. *Eur J Cancer* 1999;35:586–95.
- [162] Goss P, Winer E, Tannock I. Schwartz on behalf of the North American Vorozole Study Group L. Randomized phase III trial comparing the new potent and selective third-generation aromatase inhibitor vorozole with megestrol acetate in postmenopausal advanced breast cancer patients. *J Clin Oncol* 1999;17:52.
- [163] De Conno F, Martini C, Zecca E, Balzarini A, Venturino P, Groff L, et al. Megestrol acetate for anorexia in patients with far-advanced cancer: a double-blind controlled clinical trial. *Eur J Cancer* 1998;34:1705–9.
- [164] Chao Y, Chan WK, Wang SS, Lai KH, Chi CW, Lin CY, et al. Phase II study of megestrol acetate in the treatment of hepatocellular carcinoma. *J Gastroenterol Hepatol* 1997;12:277–81.
- [165] Gebbia V, Testa A, Gebbia N. Prospective randomised trial of two dose levels of megestrol acetate in the management of anorexia-cachexia syndrome in patients with metastatic cancer. *Br J Cancer* 1996;73:1576–80.
- [166] Mantovani G, Maccio A, Bianchi A, Curreli L, Ghiani M, Santona M, et al. Megestrol acetate in neoplastic anorexia/cachexia: clinical evaluation and comparison with cytokine levels in patients with head and neck carcinoma treated with neoadjuvant chemotherapy. *Int J Clin Lab Res* 1995;25:135–41.
- [167] Loprinzi CL, Bernath AM, Schaid DJ, Mailliard JA, Athmann LM, Michalak JC, et al. Phase III evaluation of 4 doses of megestrol acetate as therapy for patients with cancer anorexia and/or cachexia. *Oncology* 1994;51:2–7.
- [168] Lai Y-L, Fang F-M, Yeh C-Y. Management of anorexic patients in radiotherapy: a prospective randomized comparison of megestrol and prednisolone. *J Pain Symptom Manag* 1994;9:265–8.
- [169] Kornblith AB, Hollis DR, Zuckerman E, Lyss AP, Canellos GP, Cooper MR, et al. Effect of megestrol acetate on quality of life in a dose-response trial in women with advanced breast cancer. *The Cancer and Leukemia Group B. J Clin Oncol* 1993;11:2081–9.
- [170] Loprinzi CL, Michalak JC, Schaid DJ, Mailliard JA, Athmann LM, Goldberg RM, et al. Phase III evaluation of four doses of megestrol acetate as therapy for patients with cancer anorexia and/or cachexia. *J Clin Oncol* 1993;11:762–7.
- [171] Heckmayr M, Gatzemeier U. Treatment of cancer weight loss in patients with advanced lung cancer. *Oncology* 1992;49:32–4.
- [172] Jatoi A, Rowland K, Loprinzi CL, Sloan JA, Dakhil SR, MacDonald N, et al. An eicosapentaenoic acid supplement versus megestrol acetate versus both for patients with cancer-associated wasting: a North Central Cancer Treatment Group and National Cancer Institute of Canada collaborative effort. *J Clin Oncol* 2004;22:2469–76.
- [173] Willemsse PH, Van Der Ploeg E, Sleijfer DT, Tjabbes T, Van Veelen H. A randomized comparison of megestrol acetate (MA) and medroxyprogesterone acetate (MPA) in patients with advanced breast cancer. *Eur J Cancer Clin Oncol* 1990;26:337–43.
- [174] Beller E, Tattersall M, Lumley T, Levi J, Dalley D, Olver I, et al. Improved quality of life with megestrol acetate in patients with endocrine-insensitive advanced cancer: a randomised placebo-controlled trial. *Ann Oncol* 1997;8:277–83.
- [175] Loprinzi CL, Ellison NM, Schaid DJ, Krook JE, Athmann LM, Dose AM, et al. Controlled trial of megestrol acetate for the treatment of cancer anorexia and cachexia. *J Natl Cancer Inst* 1990;82:1127–32.
- [176] Tchekmedyan NS, Hickman M, Siau J, Greco FA, Keller J, Browder H, et al. Megestrol acetate in cancer anorexia and weight loss. *Cancer* 1992;69:1268–74.
- [177] Lim YL, Teoh SE, Yaow CYL, Lin DJ, Masuda Y, Han MX, et al. A systematic review and meta-analysis of the clinical use of megestrol acetate for cancer-related anorexia/cachexia. *J Clin Med* 2022;11:3756.
- [178] Ruiz-García V, López-Briz E, Carbonell-Sanchis R, Bort-Martí S, González-Perales JL. Megestrol acetate for cachexia–anorexia syndrome. A systematic review. *J Cachexia Sarcopenia Muscle* 2018;9:444–52.
- [179] Rowland K, Loprinzi CL, Shaw EG, Maksymiuk AW, Kurross SA, Jung S-H, et al. Randomized double-blind placebo-controlled trial of cisplatin and etoposide plus megestrol acetate/placebo in extensive-stage small-cell lung cancer: a North Central Cancer Treatment Group study. *J Clin Oncol* 1996;14:135–41.
- [180] Bruera E, Macmillan K, Kuehn N, Hanson J, MacDonald RN. A controlled trial of megestrol acetate on appetite, caloric intake, nutritional status, and other symptoms in patients with advanced cancer. *Cancer* 1990;66:1279–82.
- [181] Gullett NP, Hebbar G, Ziegler TR. Update on clinical trials of growth factors and anabolic steroids in cachexia and wasting. *Am J Clin Nutr* 2010;91:1143s–7s.
- [182] Smith LL. Cytokine hypothesis of overtraining: a physiological adaptation to excessive stress? *Med Sci Sports Exerc* 2000;32:317–31.
- [183] Ghobrial IM, Rajkumar SV. Management of thalidomide toxicity. *J Support Oncol* 2003;1:194–205.
- [184] Keifer JA, Guttridge DC, Ashburner BP, Albert Jr S. Inhibition of NF- κ B activity by thalidomide through suppression of I κ B kinase activity. *J Biol Chem* 2001;276:22382–7.
- [185] Bauditz J, Wedel S, Lochs H. Thalidomide reduces tumour necrosis factor α and interleukin 12 production in patients with chronic active Crohn's disease. *Gut* 2002;50:196–200.
- [186] Casal JJ, Bollini M, Lombardo ME, Bruno AM. Thalidomide analogues: tumor necrosis factor- α inhibitors and their evaluation as anti-inflammatory agents. *Eur J Pharmaceut Sci* 2016;83:114–9.
- [187] Gordon J, Trebble T, Ellis R, Duncan H, Johns T, Goggin P. Thalidomide in the treatment of cancer cachexia: a randomised placebo controlled trial. *Gut* 2005;54:540–5.
- [188] Ghobrial IM, Rajkumar SV. Management of thalidomide toxicity. *J Support Oncol* 2003;1:194–205.
- [189] Yennurajalingam S, Willey JS, Palmer JL, Allo J, Fabbro ED, Cohen EN, et al. The role of thalidomide and placebo for the treatment of cancer-related anorexia-cachexia symptoms: results of a double-blind placebo-controlled randomized study. *J Palliat Med* 2012;15:1059–64.
- [190] Jatoi A, Ritter HL, Dueck A, Nguyen PL, Nikevich DA, Luyun RF, et al. A placebo-controlled, double-blind trial of infliximab for cancer-associated weight loss in elderly and/or poor performance non-small cell lung cancer patients (N01C9). *Lung Cancer* 2010;68:234–9.
- [191] Mehrzad V, Afshar R, Akbari M. Pentoxifylline treatment in patients with cancer cachexia: a double-blind, randomized, placebo-controlled clinical trial. *Adv Biomed Res* 2016;5.
- [192] Paulsen O, Klepstad P, Rosland JH, Aass N, Albert E, Fayers P, et al. Efficacy of methylprednisolone on pain, fatigue, and appetite loss in patients with advanced cancer using opioids: a randomized, placebo-controlled, double-blind trial. *J Clin Oncol* 2014;32:3221–8.
- [193] Wen H-S, Li X, Cao Y-Z, Zhang C-C, Yang F, Shi Y-M, et al. Clinical studies on the treatment of cancer cachexia with megestrol acetate plus thalidomide. *Chemotherapy* 2012;58:461–7.
- [194] Mantovani G, Maccio A, Madeddu C, Serpe R, Massa E, Dessì M, et al. Randomized phase III clinical trial of five different arms of treatment in 332 patients with cancer cachexia. *Oncol* 2010;15:200–11.
- [195] Madeddu C, Dessì M, Panzone F, Serpe R, Antoni G, Cau MC, et al. Randomized phase III clinical trial of a combined treatment with carnitine+ celecoxib+megestrol acetate for patients with cancer-related anorexia/cachexia syndrome. *Clin Nutr* 2012;31:176–82.
- [196] Kouchaki B, Janbabai G, Alipour A, Ala S, Borhani S, Salehifar E. Randomized double-blind clinical trial of combined treatment with megestrol acetate plus celecoxib versus megestrol acetate alone in cachexia-anorexia syndrome induced by GI cancers. *Support Care Cancer* 2018;26:2479–89.
- [197] Maccio A, Madeddu C, Gramignano G, Mulas C, Floris C, Sanna E, et al. A randomized phase III clinical trial of a combined treatment for cachexia in patients with gynecological cancers: evaluating the impact on metabolic and inflammatory profiles and quality of life. *Gynecol Oncol* 2012;124:417–25.
- [198] Greig C, Johns N, Gray C, MacDonald A, Stephens N, Skipworth R, et al. Phase I/II trial of formoterol fumarate combined with megestrol acetate in cachectic patients with advanced malignancy. *Support Care Cancer* 2014;22:1269–75.
- [199] Navari RM, Brenner MC. Treatment of cancer-related anorexia with olanzapine and megestrol acetate: a randomized trial. *Support Care Cancer* 2010;18:951–6.
- [200] Chen H-C, Leung SW, Wang C-J, Sun L-M, Fang F-M, Hsu J-H. Effect of megestrol acetate and prepulsid on nutritional improvement in patients with head and neck cancers undergoing radiotherapy. *Radiother Oncol* 1997;43:75–9.
- [201] Clemente-Suárez VJ, Redondo-Flórez L, Rubio-Zarapuz A, Martínez-Guardado I, Navarro-Jiménez E, Tornero-Aguilera JF. Nutritional and exercise interventions in cancer-related cachexia: an extensive narrative review. *Int J Environ Res Publ Health* 2022;19:4604.

- [202] Pin F, Couch ME, Bonetto A. Preservation of muscle mass as a strategy to reduce the toxic effects of cancer chemotherapy on body composition. *Curr Opin Support Palliat Care* 2018;12:420–6.
- [203] Ballinger TJ, Thompson WR, Guise TA. The bone-muscle connection in breast cancer: implications and therapeutic strategies to preserve musculoskeletal health. *Breast Cancer Res* 2022;24:84.
- [204] Buffart L, Galvão DA, Brug J, Chinapaw M, Newton RU. Evidence-based physical activity guidelines for cancer survivors: current guidelines, knowledge gaps and future research directions. *Cancer Treat Rev* 2014;40:327–40.
- [205] Giallauria F, Testa C, Cuomo G, Di Lorenzo A, Venturini E, Lauretani F, et al. Exercise training in elderly cancer patients: a systematic review. *Cancers* 2023;15.
- [206] Alesi ER, del Fabbro E. Opportunities for targeting the fatigue-anorexia-cachexia symptom cluster. *Cancer J* 2014;20:325–9.
- [207] Campbell KL, Winters-Stone KM, Wiskemann J, May AM, Schwartz AL, Courneya KS, et al. Exercise guidelines for cancer survivors: consensus statement from international multidisciplinary roundtable. *Med Sci Sports Exerc* 2019;51:2375–90.
- [208] Buffart LM, Sweegers MG, May AM, Chinapaw MJ, van Vulpen JK, Newton RU, et al. Targeting exercise interventions to patients with cancer in need: an individual patient data meta-analysis. *J Nat Cancer Inst* 2018;110:1190–200.
- [209] Mustian KM, Alfano CM, Heckler C, Kleckner AS, Kleckner IR, Leach CR, et al. Comparison of pharmaceutical, psychological, and exercise treatments for cancer-related fatigue: a meta-analysis. *JAMA Oncol* 2017;3:961–8.
- [210] Torossian M, Jacelon CS. Chronic illness and fatigue in older individuals: a systematic review. *Rehabil Nurs* 2021;46:125–36.
- [211] Yang M, Liu L, Gan C-e, Qiu L-h, Jiang X-j, He X-t, et al. Effects of home-based exercise on exercise capacity, symptoms, and quality of life in patients with lung cancer: a meta-analysis. *Eur J Oncol Nurs* 2020;49:101836.
- [212] Nakano J, Hashizume K, Fukushima T, Ueno K, Matsuura E, Ikio Y, et al. Effects of aerobic and resistance exercises on physical symptoms in cancer patients: a meta-analysis. *Integr Cancer Ther* 2018;17:1048–58.
- [213] King NA, Burley VJ, Blundell JE. Exercise-induced suppression of appetite: effects on food intake and implications for energy balance. *Eur J Clin Nutr* 1994;48:715–24.
- [214] Balaguera-Cortes L, Wallman KE, Fairchild TJ, Guelfi KJ. Energy intake and appetite-related hormones following acute aerobic and resistance exercise. *Appl Physiol Nutr Metabol* 2011;36:958–66.
- [215] Hong Y, Wu C, Wu B. Effects of resistance exercise on symptoms, physical function, and quality of life in gastrointestinal cancer patients undergoing chemotherapy. *Integr Cancer Ther* 2020;19:1534735420954912.
- [216] Weyhe D, Obonyo D, Uslar V, Tabriz N. Effects of intensive physiotherapy on Quality of Life (QoL) after pancreatic cancer resection: a randomized controlled trial. *BMC Cancer* 2022;22:1–12.
- [217] Fearon K, Strasser F, Anker SD, Bosaeus I, Bruera E, Fainsinger RL, et al. Definition and classification of cancer cachexia: an international consensus. *Lancet Oncol* 2011;12:489–95.
- [218] Yoon SL, Grundmann O. Relevance of dietary supplement use in gastrointestinal-cancer-associated cachexia. *Nutrients* 2023;15:3391.
- [219] Deutz NE, Bauer JM, Barazzoni R, Biolo G, Boirie Y, Boly-Westphal A, et al. Protein intake and exercise for optimal muscle function with aging: recommendations from the ESPEN Expert Group. *Clin Nutr* 2014;33:929–36.
- [220] Evans WJ, Morley JE, Argiles J, Bales C, Baracos V, Guttridge D, et al. Cachexia: a new definition. *Clin Nutr* 2008;27:793–9.
- [221] Roeland EJ, Bohlke K, Baracos VE, Bruera E, Del Fabbro E, Dixon S, et al. Management of cancer cachexia: ASCO guideline. *J Clin Oncol* 2020;38:2438–53.
- [222] Arends J, Strasser F, Gonella S, Solheim T, Madeddu C, Rivasco P, et al. Cancer cachexia in adult patients: ESMO clinical practice guidelines. *ESMO open* 2021;6.
- [223] Muscaritoli M, Arends J, Bachmann P, Baracos V, Barthelemy N, Bertz H, et al. ESPEN practical guideline: clinical Nutrition in cancer. *Clin Nutr* 2021;40:2898–913.
- [224] Capitão C, Coutinho D, Neves PM, Capelas ML, Pimenta NM, Santos T, et al. Protein intake and muscle mass maintenance in patients with cancer types with high prevalence of sarcopenia: a systematic review. *Support Care Cancer* 2022;30:3007–15.
- [225] Ford KL, Arends J, Atherton PJ, Engelen M, Gonçalves TJM, Laviano A, et al. The importance of protein sources to support muscle anabolism in cancer: an expert group opinion. *Clin Nutr* 2022;41:192–201.
- [226] Branco MG, Mateus C, Capelas ML, Pimenta N, Santos T, Mäkitie A, et al. Bioelectrical impedance analysis (BIA) for the assessment of body composition in oncology: a scoping review. *Nutrients* 2023;15.
- [227] Poppitt SD, McCormack D, Buffenstein R. Short-term effects of macronutrient preloads on appetite and energy intake in lean women. *Physiol Behav* 1998;64:279–85.
- [228] Butterworth M, Lees M, Harlow P, Hind K, Duckworth L, Ispoglou T. Acute effects of essential amino acid gel-based and whey protein supplements on appetite and energy intake in older women. *Appl Physiol Nutr Metabol* 2019;44:1141–9.
- [229] Veldhorst MA, Nieuwenhuizen AG, Hochstenbach-Waelen A, Westerterp KR, Engelen MP, Brummer R-JM, et al. Effects of complete whey-protein breakfasts versus whey without GMP-breakfasts on energy intake and satiety. *Appetite* 2009;52:388–95.
- [230] Sukkar SG, Vaccaro A, Ravera GB, Borrini C, Gradaschi R, Sacchi-Nemours AM, et al. Appetite control and gastrointestinal hormonal behavior (CCK, GLP-1, PYY 1–36) following low doses of a whey protein-rich nutraceutical. *Medi-terr J Nutr Metabol* 2013;6:259–66.
- [231] Moran TH, Dailey MJ. Intestinal feedback signaling and satiety. *Physiol Behav* 2011;105:77–81.
- [232] Viskaitis P, Arnold M, Garau C, Jensen LT, Fugger L, Peleg-Raibstein D, et al. Ingested non-essential amino acids recruit brain orexin cells to suppress eating in mice. *Curr Biol* 2022;32:1812–1821. e4.
- [233] Murphy CH, Oikawa SY, Phillips SM. Dietary protein to maintain muscle mass in aging: a case for per-meal protein recommendations. *J Frailty Aging* 2016;5:49–58.
- [234] Atherton PJ, Smith K, Etheridge T, Rankin D, Rennie MJ. Distinct anabolic signalling responses to amino acids in C2C12 skeletal muscle cells. *Amino Acids* 2010;38:1533–9.
- [235] Kimball SR, Shantz LM, Horetsky RL, Jefferson LS. Leucine regulates translation of specific mRNAs in L6 myoblasts through mTOR-mediated changes in availability of eIF4E and phosphorylation of ribosomal protein S6. *J Biol Chem* 1999;274:11647–52.
- [236] Moberg M, Apró W, Ekblom B, van Hall G, Holmberg HC, Blomstrand E. Activation of mTORC1 by leucine is potentiated by branched-chain amino acids and even more so by essential amino acids following resistance exercise. *Am J Physiol Cell Physiol* 2016;310:C874–84.
- [237] Cangiano C, Laviano A, Meguid MM, Mulieri M, Conversano L, Preziosa I, et al. Effects of administration of oral branched-chain amino acids on anorexia and caloric intake in cancer patients. *J Natl Cancer Inst* 1996;88:550–2.
- [238] Ispoglou T, Deighton K, King RF, White H, Lees M. Novel essential amino acid supplements enriched with L-leucine facilitate increased protein and energy intakes in older women: a randomised controlled trial. *Nutr J* 2017;16:1–10.
- [239] Ziętarska M, Krawczyk-Lipiec J, Kraj L, Zaucha R, Małgorzewicz S. Chemotherapy-related toxicity, nutritional status and quality of life in precachectic oncologic patients with, or without, high protein nutritional support. A prospective, randomized study. *Nutrients* 2017;9:1108.
- [240] Zaid ZA, Shahar S, A Jamal AR, Mohd Yusoff NA. Fish oil supplementation is beneficial on caloric intake, appetite and mid upper arm muscle circumference in children with leukaemia. *Asia Pac J Clin Nutr* 2012;21:502–10.
- [241] Sim E, Kim J-M, Lee S-M, Chung MJ, Song SY, Kim ES, et al. The effect of omega-3 enriched oral nutrition supplement on nutritional indices and quality of life in gastrointestinal cancer patients: a randomized clinical trial. 2022.
- [242] Sánchez-Lara K, Turcott JG, Juárez-Hernández E, Nuñez-Valencia C, Villanueva G, Guevara P, et al. Effects of an oral nutritional supplement containing eicosapentaenoic acid on nutritional and clinical outcomes in patients with advanced non-small cell lung cancer: randomised trial. *Clin Nutr* 2014;33:1017–23.
- [243] Fearon KC, Barber MD, Moses AG, Ahmedzai SH, Taylor GS, Tisdale MJ, et al. Double-blind, placebo-controlled, randomized study of eicosapentaenoic acid diester in patients with cancer cachexia. *J Clin Oncol* 2006;24:3401–7.
- [244] Fearon K, Von Meyenfeldt M, Moses A, van Geenen R, Roy A, Gouma D, et al. Effect of a protein and energy dense n-3 fatty acid enriched oral supplement on loss of weight and lean tissue in cancer cachexia: a randomised double blind trial. *Gut* 2003;52:1479–86.
- [245] Barber MD, Ross JA, Voss AC, Tisdale MJ, Fearon KC. The effect of an oral nutritional supplement enriched with fish oil on weight-loss in patients with pancreatic cancer. *Br J Cancer* 1999;81:80–6.
- [246] Bruera E, Strasser F, Palmer JL, Willey J, Calder K, Amyotte G, et al. Effect of fish oil on appetite and other symptoms in patients with advanced cancer and anorexia/cachexia: a double-blind, placebo-controlled study. *Nutr Clin Pract* 2003;18:524.
- [247] Cerchietti LC, Navigante AH, Castro MA. Effects of eicosapentaenoic and docosahexaenoic n-3 fatty acids from fish oil and preferential Cox-2 inhibition on systemic syndromes in patients with advanced lung cancer. *Nutr Cancer* 2007;59:14–20.
- [248] Solís-Martínez O, Plasa-Carvalho V, Phillips-Sixtos G, Trujillo-Cabrera Y, Hernández-Cuellar A, Queipo-García GE, et al. Effect of eicosapentaenoic acid on body composition and inflammation markers in patients with head and neck squamous cell cancer from a public hospital in Mexico. *Nutr Cancer* 2018;70:663–70.
- [249] Freitas RDS, Campos MM. Understanding the appetite modulation pathways: the role of the FFA1 and FFA4 receptors. *Biochem Pharmacol* 2021;186:114503.
- [250] Werner K, Küllenberg de Gaudry D, Taylor LA, Keck T, Unger C, Hopt UT, et al. Dietary supplementation with n-3-fatty acids in patients with pancreatic cancer and cachexia: marine phospholipids versus fish oil - a randomized controlled double-blind trial. *Lipids Health Dis* 2017;16:104.
- [251] Jatoi A, Rowland K, Loprinzi CL, Sloan JA, Dakhil SR, MacDonald N, et al. An eicosapentaenoic acid supplement versus megestrol acetate versus both for patients with cancer-associated wasting: a North Central Cancer Treatment Group and National Cancer Institute of Canada collaborative effort. *J Clin Oncol* 2004;22:2469–76.
- [252] Jatoi A, Steen P, Atherton P, Moore D, Rowland K, Le-Lindqwister N, et al. A double-blind, placebo-controlled randomized trial of creatine for the cancer anorexia/weight loss syndrome (N02C4): an Alliance trial. *Ann Oncol* 2017;28:1957–63.

- [253] Baldwin C, de van der Schueren MA, Kruizenga HM, Weekes CE. Dietary advice with or without oral nutritional supplements for disease-related malnutrition in adults. *Cochrane Database Syst Rev* 2021.
- [254] Bourdel-Marchasson I, Blanc-Bisson C, Doussau A, Germain C, Blanc J-F, Dauba J, et al. Nutritional advice in older patients at risk of malnutrition during treatment for chemotherapy: a two-year randomized controlled trial. *PLoS One* 2014;9:e108687.
- [255] Liu L, Wang Y-c, Liu Q-w, Li J-b, Wu X-d, Qin H-y. Home enteral nutrition after esophagectomy for esophageal cancer: a systematic review and meta-analysis. *Medicine* 2020;99.
- [256] Amano K, Baracos VE, Hopkinson JB. Integration of palliative, supportive, and nutritional care to alleviate eating-related distress among advanced cancer patients with cachexia and their family members. *Crit Rev Oncol Hematol* 2019;143:117–23.
- [257] Portman DG, Thirlwell S, Donovan KA, Alvero C, Gray JE, Holloway R, et al. Leveraging a team mental model to develop a cancer anorexia-cachexia syndrome team. *J Oncol Pract* 2016;12:1046–52.
- [258] Najafi S, Haghghat S, Raji Lahiji M, RazmPoosh E, Chamari M, Abdollahi R, et al. Randomized study of the effect of dietary counseling during adjuvant chemotherapy on chemotherapy induced nausea and vomiting, and quality of life in patients with breast cancer. *Nutr Cancer* 2019;71: 575–84.
- [259] Hopkinson JB. The psychosocial components of multimodal interventions offered to people with cancer cachexia: a scoping review. *Asia Pac J Oncol Nurs* 2021;8:450–61.
- [260] Michie S, Atkins L, West R. *The behaviour change wheel. A guide to designing interventions*. 1st ed. Great Britain: Silverback Publishing; 2014. p. 1003–10.