



LEEDS
BECKETT
UNIVERSITY

Citation:

Heeson, SJA (2019) "Can you do something with this data?" - Transforming OpenAthens e-resource usage data into student engagement insights. In: OpenAthens Conference 2019 User-centred by Design, 19 March 2019 - 19 March 2019, America Square Conference Centre, London, UK. (Unpublished)

Link to Leeds Beckett Repository record:

<https://eprints.leedsbeckett.ac.uk/id/eprint/5789/>

Document Version:

Conference or Workshop Item (Presentation)

The aim of the Leeds Beckett Repository is to provide open access to our research, as required by funder policies and permitted by publishers and copyright law.

The Leeds Beckett repository holds a wide range of publications, each of which has been checked for copyright and the relevant embargo period has been applied by the Research Services team.

We operate on a standard take-down policy. If you are the author or publisher of an output and you would like it removed from the repository, please [contact us](#) and we will investigate on a case-by-case basis.

Each thesis in the repository has been cleared where necessary by the author for third party copyright. If you would like a thesis to be removed from the repository or believe there is an issue with copyright, please contact us on openaccess@leedsbeckett.ac.uk and we will investigate on a case-by-case basis.



LEEDS
BECKETT
UNIVERSITY

“Can you do something with this data?”

Transforming OpenAthens e-resource usage data into student engagement insights

Samantha Heeson

Electronic and Data Services Librarian

Libraries and Learning Innovation

Background



LEEDS
BECKETT
UNIVERSITY



- OpenAthens
 - User experience
 - Vendor input
 - Potential analysis
- Active Directory Federation Services
 - User IDs
 - Approved solution
- E-journals & databases
- Electronic & Data Services Librarian
- “Can you do something with this data?”

OpenAthens Data

name	Cambridge	Cengage	Digital Content Store	EBSCO	EDINA: Digimap	Elsevier	Emerald	HeinOnline	JSTOR	Learning on Screen	LexisNexis	Oxford Academic	Taylor & Francis	Westlaw	
l	47	19516		418	783	327	477	164	19	233	361	218	126	888	4
0605	0	0		0	1	0	0	0	0	0	0	0	0	0	0
1056	0	0		0	0	0	1	0	0	0	0	0	0	0	0
5032	0	0		0	0	0	1	0	0	0	0	0	0	0	0
2641	0	0		2	0	0	0	0	0	0	0	0	0	0	0
8185	0	0		0	1	0	0	0	0	0	0	0	0	1	0
9549	0	0		0	0	0	11	0	0	0	0	0	0	0	0
7338	0	0		0	0	1	0	0	0	0	0	0	0	0	0
1062	0	0		0	0	0	0	0	0	0	0	0	0	0	0
3225	0	0		0	0	4	0	0	0	0	0	0	0	0	0
4461	0	0		0	0	0	0	0	0	0	0	0	0	0	0
7846	0	0		1	0	0	0	0	0	0	0	0	0	0	0
2885	0	0		1	0	0	0	0	0	0	0	0	0	0	0
3988	0	1		0	0	0	0	0	0	0	0	0	0	0	0
5583	0	0		0	0	0	0	3	0	0	0	0	0	0	0
1172	0	0		4	0	0	0	0	0	0	0	0	0	0	0
5115	0	0		0	0	0	0	0	0	0	0	0	0	0	0
7161	0	0		0	0	0	0	4	0	0	0	0	0	0	0
7919	0	0		0	5	0	0	0	0	0	0	0	0	0	0
7993	1	0		0	0	0	0	0	0	0	0	0	0	0	0
9533	0	0		0	0	0	0	0	0	0	0	0	0	7	0
0463	0	0		0	3	0	1	0	0	0	0	0	2	2	0
1126	0	0		0	0	0	0	0	0	0	0	0	0	2	0
2959	0	0		0	1	0	5	0	0	0	0	0	0	1	0
5349	0	0		1	0	0	0	0	0	0	0	0	0	0	0
1371	0	0		0	0	0	0	2	0	0	0	0	0	1	0
2112	0	0		1	0	0	0	0	0	0	0	0	0	0	0
5771	0	0		1	0	0	0	0	0	0	0	0	0	0	0
6527	0	0		0	0	0	0	0	0	0	0	0	0	0	0
9044	0	0		0	0	0	0	0	0	0	0	0	0	0	0
4716	0	0		0	3	0	0	0	0	0	0	0	0	0	0
8301	0	0		0	0	0	0	0	0	0	2	0	0	0	0
1488	0	0		0	0	0	0	0	0	0	4	0	0	0	0

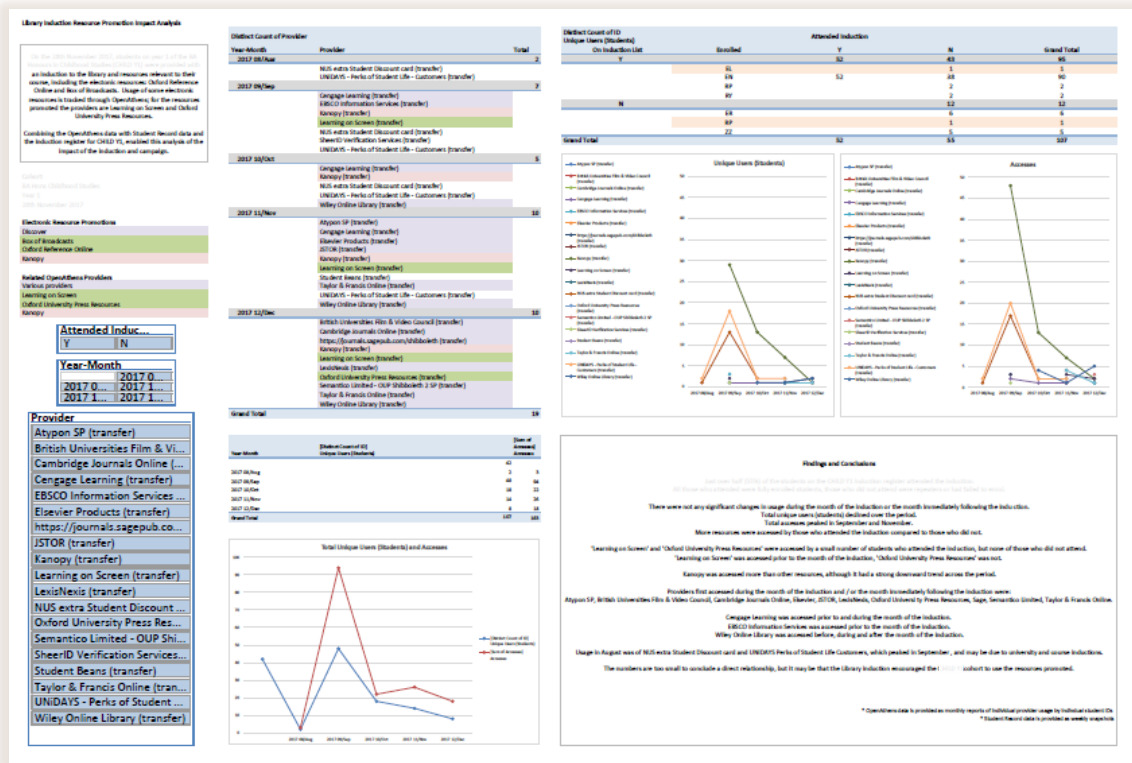
- Monthly CSV reports
- Resource usage
 - E-resources
 - User IDs
 - Accesses
- Basic overview
- No user groups
- 30,000+ students
- 750,000 pieces of data
- Potential...

Proof of Concept

- Three month snapshot
 - OpenAthens
 - Student Record
 - Physical stock
 - Reading lists
- Re-structure & re-format
- User IDs
- In-depth analysis
- Relevant usage
- Potential...

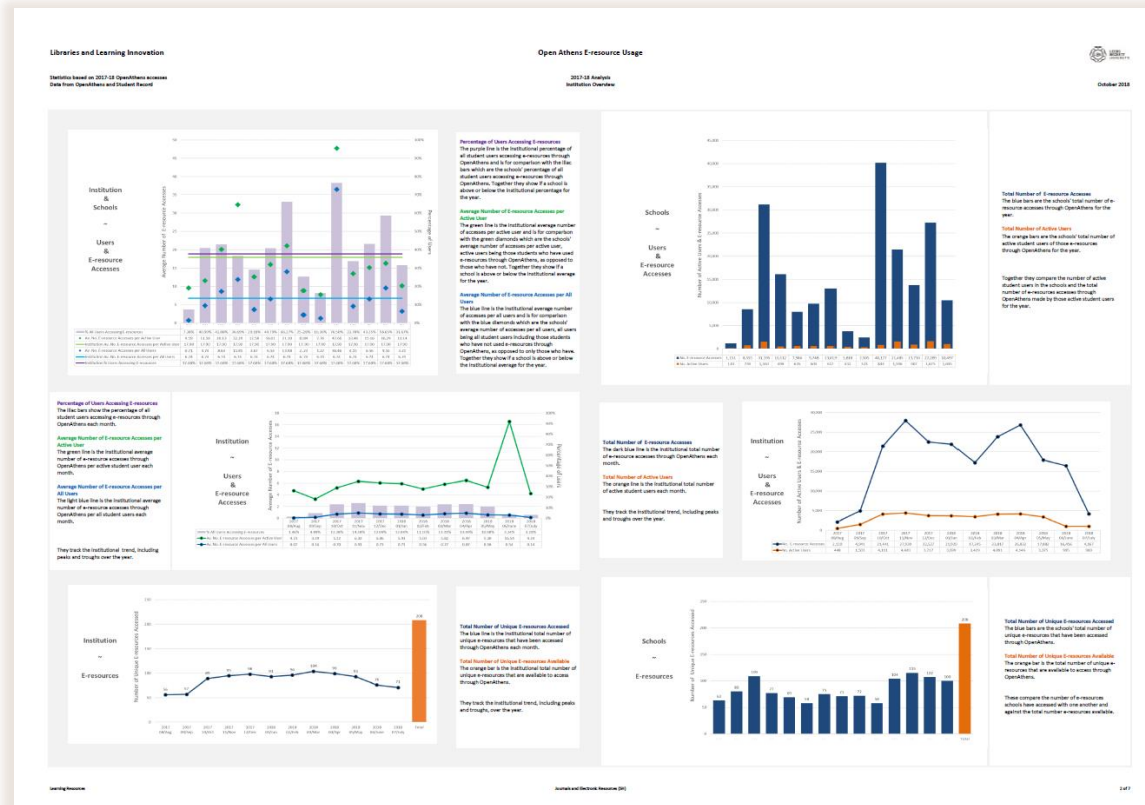
Provider	Month	Item Library	Item Collection	Count of ID	Distinct Count of IDZ
Atypen SP (transfer)	17/04 April	Huddingly Library	SHELVES	3	2
Cambridge Journals ...	17/05 May	Shails Silver Library	AV	1	1
DawsonEra (transfer)	17/06 June		COUNTER	5	1
Digital Content Stor...			ILL	39	10
EBSO Information...			LAW-COLL	5	5
Total				449	164
Grand Total				449	164

Prototype



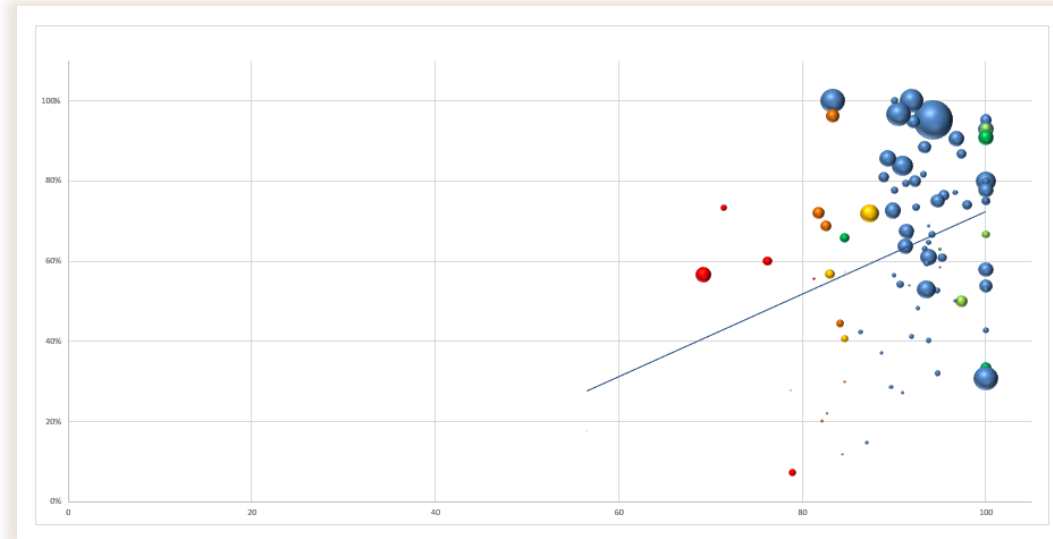
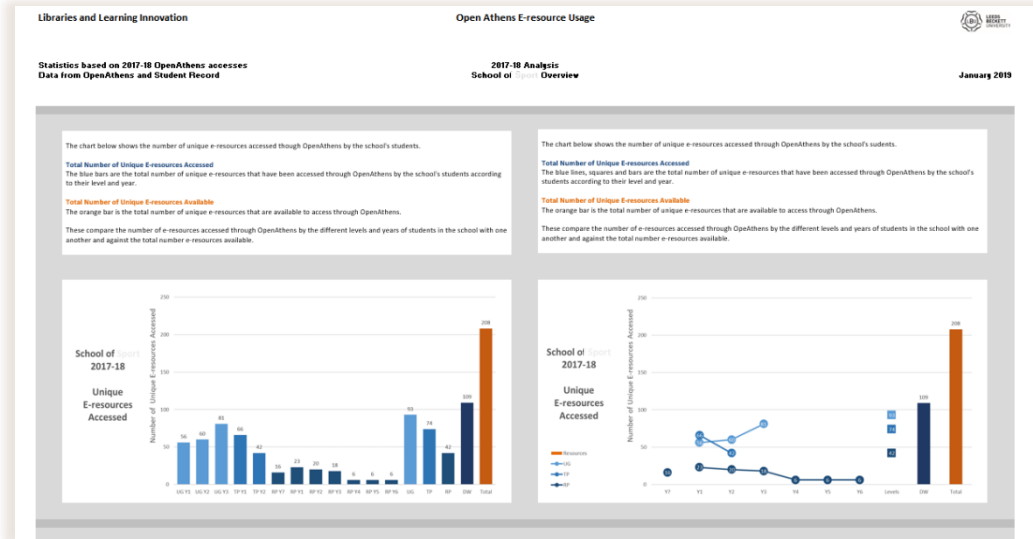
- Database
- Charts
- Narrative
- Five month snapshot
 - OpenAthens
 - Student Record
- Library impact
- Focused analysis
- Early insight
- Appetite...

Standard Reports

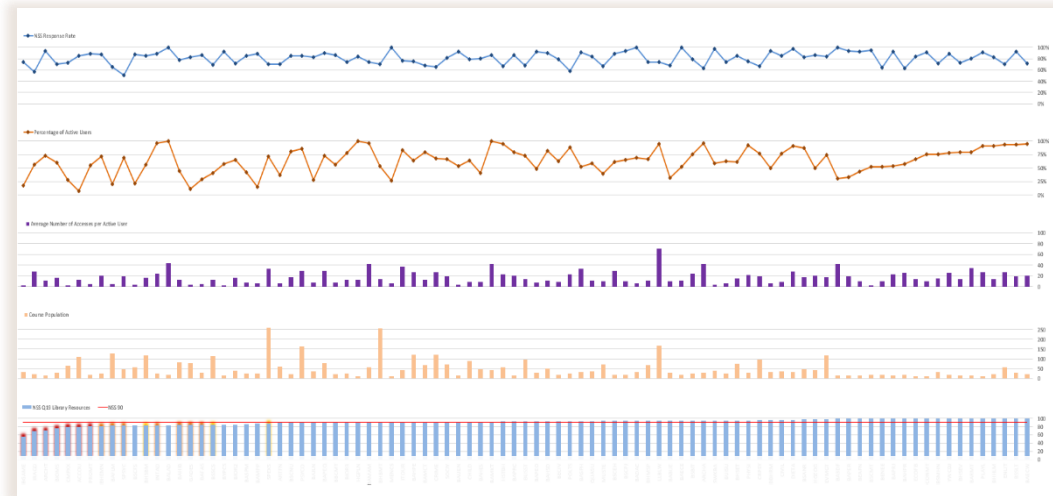


- Institutional & school trends
- Academic year
- Stable system
- Static dashboard
- Highlights & anomalies
- Discussions with schools
- Enhance academic support
- Purchasing decisions
- Custom reports...

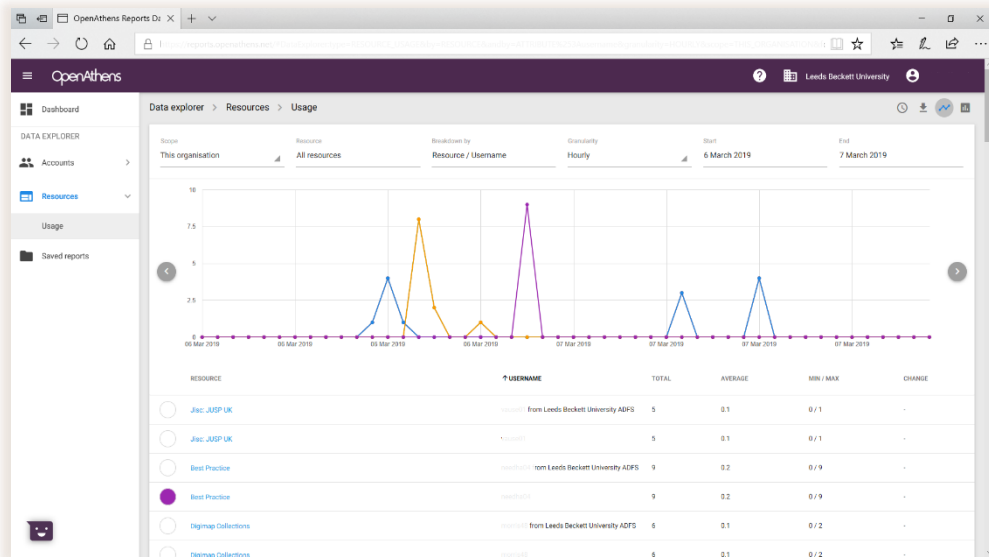
Custom Reports



- School by level and year
- Student engagement & student satisfaction correlation
- Next steps...



Longitudinal Analysis



A	SEG	SEH	SEI	SEJ	SEK	SEL	SEM	SEN
Date	Digimap Collections / from Leeds Beckett University ADFS	IEEE Xplore / from Leeds Beckett University ADFS	Jisc: JUSP UK / from Leeds Beckett University ADFS	Learning on Screen / from Leeds Beckett University ADFS	Thomson Reuters OnePass / from Leeds Beckett University ADFS	Anatomy.tv powered by Primal Pictures / from Leeds Beckett University ADFS	Alexander Street Press LLC / from Leeds Beckett University ADFS	LexisNexis / from Leeds Beckett University ADFS
Total		1	4	60	3	3	4	1
01/11/2018		1	4	60	3	3	4	1

- New OpenAthens interface
 - Timeouts
 - Duplication
 - Structure
- Student engagement vs. e-resource usage
- Monthly, hourly & daily reports
- “Yes, I can do something with this data!”
- Student Record
- Visualisations



LEEDS
BECKETT
UNIVERSITY

Thank you

Any questions?

S.Heeson@leedsbeckett.ac.uk