



LEEDS
BECKETT
UNIVERSITY

Citation:

Jones, D and Di Martino, E and Bradley, SH and Essang, B and Hemphill, S and Wright, JM and Renzi, C and Surr, C and Clegg, A and Neal, R (2022) Factors influencing the symptom appraisal and help seeking of older adults with possible cancer: a mixed methods systematic review. *British Journal of General Practice*. ISSN 0960-1643 DOI: <https://doi.org/10.3399/BJGP.2021.0655>

Link to Leeds Beckett Repository record:

<https://eprints.leedsbeckett.ac.uk/id/eprint/8621/>

Document Version:

Article (Published Version)

Creative Commons: Attribution 4.0

(c) the authors

The aim of the Leeds Beckett Repository is to provide open access to our research, as required by funder policies and permitted by publishers and copyright law.

The Leeds Beckett repository holds a wide range of publications, each of which has been checked for copyright and the relevant embargo period has been applied by the Research Services team.

We operate on a standard take-down policy. If you are the author or publisher of an output and you would like it removed from the repository, please [contact us](#) and we will investigate on a case-by-case basis.

Each thesis in the repository has been cleared where necessary by the author for third party copyright. If you would like a thesis to be removed from the repository or believe there is an issue with copyright, please contact us on openaccess@leedsbeckett.ac.uk and we will investigate on a case-by-case basis.

Daniel Jones, Erica Di Martino, Stephen H Bradley, Blessing Essang, Scott Hemphill, Judy M Wright, Cristina Renzi, Claire Surr, Andrew Clegg and Richard Neal

Factors influencing symptom appraisal and help-seeking of older adults with possible cancer:

a mixed-methods systematic review

Abstract

Background

The cancer burden falls predominantly on older (≥ 65 years) adults. Prompt presentation to primary care with cancer symptoms could result in earlier diagnosis. However, patient symptom appraisal and help-seeking decisions involving cancer symptoms are complex and may be further complicated in older adults.

Aim

To explore the effect of older age on patients' appraisal of possible cancer symptoms and their decision to seek help for these symptoms.

Design and setting

Mixed-methods systematic review.

Method

MEDLINE, EMBASE, CINAHL, PsycINFO, Cochrane Library, Web of Science Core Collection, ASSIA, the ISRCTN registry, and the National Institute for Health and Care Excellence were searched for studies on symptom appraisal and help-seeking decisions for cancer symptoms by adults aged ≥ 65 years. Studies were analysed using thematic synthesis and according to the Synthesis Without Meta-Analysis guidelines.

Results

Eighty studies were included with a total of 32 995 participants. Studies suggested a possible association between increasing age and prolonged symptom appraisal interval. Reduced knowledge of cancer symptoms and differences in symptom interpretation may contribute to this prolonged interval. In contrast, in the current study a possible association was found between increasing age and prompt help-seeking. Themes affecting help-seeking in older adults included the influence of family and carers, competing priorities, fear, embarrassment, fatalism, comorbidities, a desire to avoid doctors, a perceived need to not waste doctors' time, and patient self-management of symptoms.

Conclusion

This review suggests that increasing age is associated with delayed cancer symptom appraisal. When symptoms are recognised as potentially serious, increasing age was associated with prompt help-seeking although other factors could prolong this. Policymakers, charities, and GPs should aim to ensure older adults are able to recognise potential symptoms of cancer and seek help promptly.

Keywords

early detection of cancer; frail elderly; primary health care; systematic review.

INTRODUCTION

Worldwide, the population of adults aged >65 years is growing faster than any other age group.¹ The burden of cancer falls predominantly on older patients with half of all new diagnoses occurring in people aged >70 years and incidence rates for all cancers increasing most rapidly in the >75 years age group.^{1,2}

Shorter times to diagnosis result in more favourable cancer outcomes and patient experiences.^{3,4} As a result, cancer strategies prioritise prompt presentation by patients with symptoms that could be caused by cancer. However, previous qualitative research has highlighted the complexity of patient appraisal and help-seeking decisions involving cancer 'alarm symptoms'. This complexity includes a lack of awareness of cancer symptoms as well as concerns about wasting doctors' time and fears around facing a diagnosis of cancer, all of which may delay presentation to primary care.^{5,6} In older adults, the recognition of cancer symptoms could be further complicated by the presence of chronic diseases and cognitive impairment that may affect the ability to recognise new symptoms.^{7,8} In addition to this, symptoms may be dismissed as part of the ageing process and social isolation may result

in the absence of a person to prompt presentation.

The aim of this review is to explore the effect of older age on the appraisal of symptoms that could indicate cancer in older adults and the decision to seek help in primary care for these symptoms.

METHOD

Protocol

Before commencing this review, a study protocol was registered with PROSPERO (reference number: CRD42020180656). The review has been conducted and reported according to the Cochrane Handbook for Systematic Reviews and the Preferred Reporting Items for Systematic Reviews and Meta-Analyses (PRISMA) statement.⁹

Definition of older adults

There is no universally accepted age threshold for defining old age. The World Health Organization's definition of 'older people' as those aged ≥ 65 years was adopted.¹⁰

Theoretical model

The model of pathways to treatment was used to provide a theoretical underpinning for the analysis of patient appraisal and help-seeking.¹¹ The model is recommended for

D Jones (ORCID: 0000-0003-3833-6055), MRCP, PhD, academic clinical lecturer; **E Di Martino**, PhD, research fellow; **SH Bradley** (ORCID: 0000-0002-2038-2056), MRCP, clinical research fellow; **B Essang**, MBChB, academic clinical fellow; **S Hemphill**, MBChB, academic foundation doctor; **JM Wright**, MSc, FHEA, senior information specialist, Leeds Institute of Health Sciences, University of Leeds, Leeds. **C Renzi**, MD, PhD, principal clinical research fellow, University College London, London. **C Surr**, BA (hons), PGDip, PhD, professor of dementia studies and director of the Centre for Dementia Research, Leeds Beckett University, Leeds. **A Clegg**, BSc, MRCP, MD, professor of geriatric medicine and honorary consultant geriatrician, Academic Unit for Ageing & Stroke Research, University of Leeds,

Leeds. **R Neal** (ORCID: 0000-0002-3544-2744), FRCP, FHEA, PhD, professor of primary care oncology, School of Medicine, University of Leeds, Leeds.

Address for correspondence

Daniel Jones, School of Medicine, University of Leeds, Worsley Building, Leeds LS2 9LU, UK.

Email: d.j.jones@leeds.ac.uk

Submitted: 26 November 2021; **Editor's response:** 2 March 2022; **final acceptance:** 24 May 2022.

©The Authors

This is the full-length article (published online 23 Aug 2022) of an abridged version published in print. Cite this version as: **Br J Gen Pract 2022; DOI: <https://doi.org/10.3399/BJGP.2021.0655>**

How this fits in

The burden of cancer falls predominantly on older (≥ 65 years) adults, and prompt presentation to primary care with cancer symptoms results in better patient outcomes. The current review, which included 80 studies, found that older adults with cancer symptoms may have prolonged symptom appraisal and shorter help-seeking intervals prior to presenting to general practice. Factors such as knowledge of cancer symptoms, the influence of family and carers, fear, embarrassment, comorbidities, and patient self-management all affected the appraisal or help-seeking interval. Clinicians should be aware of patient difficulty in distinguishing potentially worrying cancer symptoms from symptoms of ageing as a result of frailty or comorbidities.

mapping and examining pathways to cancer diagnosis. The model defines the appraisal interval as the time between detecting a bodily change and perceiving a reason to discuss this bodily change with a healthcare professional (HCP). The help-seeking interval is defined as the time between perceiving a need to seek medical help and arranging and attending an appointment with an HCP. The patient interval encompasses both the appraisal and help-seeking interval, and is defined as the time from first noticing a symptom to presenting to an HCP.

Eligibility criteria

Studies of patients aged ≥ 65 years, or with a subgroup of patients aged ≥ 65 years, with symptoms and signs that warrant investigation and referral for suspected cancer¹² presenting to primary care before diagnosis were included in the current study. Editorials, case studies, reviews, expert opinion papers, and studies that were published as abstracts only were excluded from the review. Systematic reviews, published theses, and dissertations were not included but when these were identified reference lists were screened for relevant studies.

Search strategy

Ovid MEDLINE(R) ALL 1946 to 28 July 2021, EMBASE (Ovid) 1947 to 28 July 2021, CINAHL (EBSCOhost), APA PsycINFO (Ovid) 1806 to week 3 of July 2021, Cochrane Central Register of Controlled Trials (Wiley) Issue 7 of 12, July 2021, Cochrane Database of Systematic Reviews (Wiley) Issue 7 of 12, July 2021, Web of Science Core Collection (individual databases are listed in Supplementary Information S1),

Applied Social Sciences Index and Abstracts (ProQuest), ISRCTN registry, ClinicalTrials.gov, and the National Institute for Health and Care Excellence Evidence Search for published and unpublished studies of cancer-related shared decision making for older adults in primary care were searched. The search was originally conducted in April 2020 and updated on 29 July 2021 by re-running all searches without date limits and removing duplicates from the original searches using EndNote.

Subject headings and free-text words were identified for use in the search concepts by two authors and was based on a search strategy published in a similar review.¹³ No language, data, or study design limits were used. Full search strategies are available in Supplementary Information S1.

Further relevant studies were sought by reviewing reference lists of the included studies, and manually searching conference abstracts using the conference handbooks from events organised by the Cancer and Primary Care Research International Network,¹⁴ the National Cancer Research Institute,¹⁵ Macmillan Cancer Support,¹⁶ and Cancer Research UK.¹⁷

Search results were managed in an EndNote library where duplicates were removed automatically and manually using University of Leeds Academic Unit of Health Economics guidance.

Data collection

All titles and abstracts were independently reviewed by two researchers using the review software Rayyan. Any disagreements were resolved through discussion or through adjudication by a third reviewer if required. All reasons for exclusion were recorded. Data extraction was undertaken using a data extraction template.

Risk of bias of included studies

The mixed-methods appraisal tool (MMAT) was used to appraise the methodological quality of the included studies.¹⁸ The tool allows the appraisal of randomised, non-randomised, quantitative descriptive, qualitative, and mixed-methods studies. The tool provides five methodological quality criteria that vary for each type of study.¹⁹ The reviewers' reasons for ratings, including strengths and weaknesses of studies, were recorded independently by two reviewers. Any disagreements were resolved through discussion.

Synthesis of results

Qualitative studies were analysed using thematic synthesis described by Thomas

and Harden.²⁰ Thematic synthesis includes line by line coding of all results, the organisation of the codes into themes, and finally further interpretation to develop analytical themes that aim to offer a new interpretation of the study findings. This was undertaken independently by two reviewers. The ENTREQ guidelines for reporting the synthesis of qualitative research were followed.²¹

Quantitative studies did not provide data suitable for meta-analysis because of heterogeneous effect measures and clinical and methodological diversity. As a result, the analysis reporting was undertaken using the SWiM (Synthesis Without Meta-Analysis) reporting guidelines and checklist.²²

Following the separate analysis of qualitative and quantitative data, the findings were combined by considering the barriers and facilitators to appraisal and help-seeking. This method was based on previous published guidance on integrating qualitative research in systematic reviews.²³

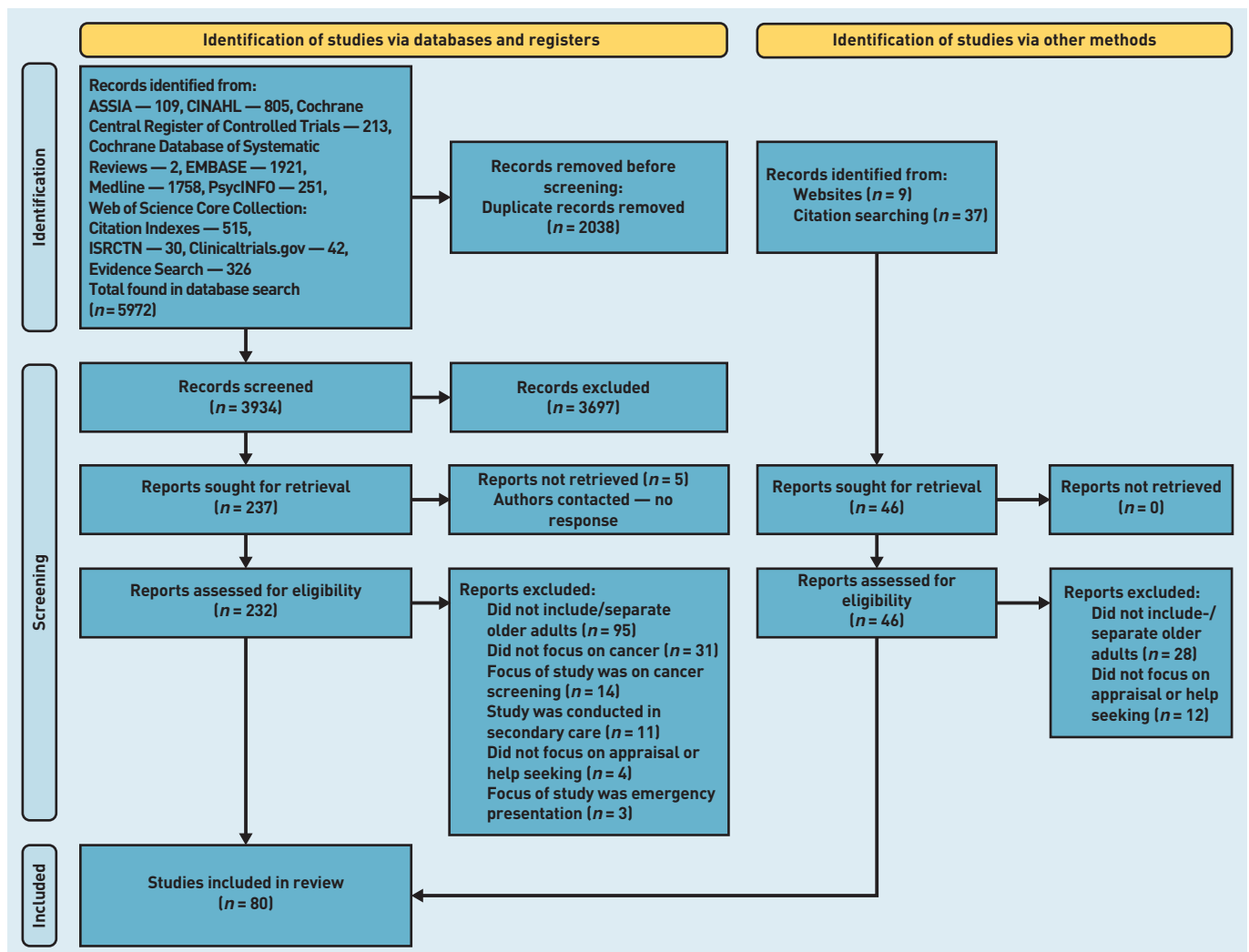
RESULTS

The database searches identified 5972 studies that reduced to 3934 when duplicates were removed. After title and abstract screening and full-text review, 80 papers were included in this review including 324 995 participants (Figure 1).

Studies ranged in size from 10 to 65 192 participants. Forty-six papers included quantitative data²⁴⁻⁶⁹ and 31 provided qualitative data,⁷⁰⁻¹⁰⁰ three were mixed-methods studies and provided both qualitative and quantitative data.¹⁰¹⁻¹⁰³ Study settings were UK, Australia, Denmark, Estonia, France, Germany, Holland, Malaysia, South Africa, Spain, Sweden, Trinidad and Tobago, and the US.

There were no clear differences in the appraisal or help-seeking of older adults by country and, although most of the included countries have a GP gatekeeper healthcare system, no system factors were highlighted in the studies. A variety of cancers were studied including 'any cancer', colorectal,

Figure 1. PRISMA flow diagram.



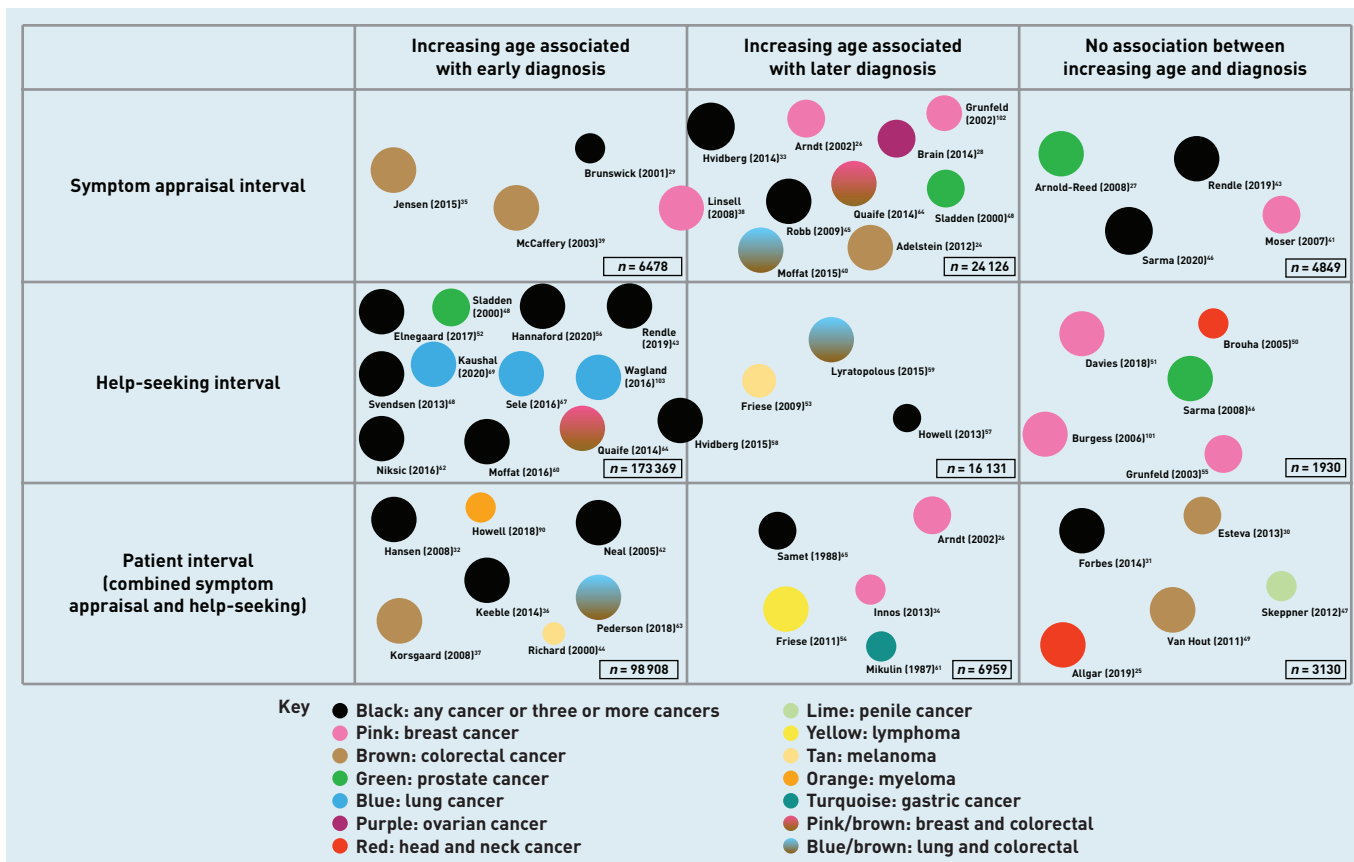


Figure 2. Diagram to show the number of quantitative studies, the association with appraisal and help-seeking, the cancer investigated, and the quality assessment. Size of circle corresponds to the quality rating judged using MMAT. MMAT = mixed-methods appraisal tool.

brain, breast, lung, prostate, lymphoma, ovarian, upper gastrointestinal, bladder, cervical, leukaemia, gastric, myeloma, head and neck, melanoma, pancreatic, and penile. Overall, the quality of studies was judged to be high with an average MMAT across the 80 included studies of 4.6 out of a maximum possible score of 5.0. See Figure 2 for a summary of the results and Supplementary Tables S1–3 for details on the included studies.

Appraisal interval

This review included 50 studies that considered the association between age and help-seeking for cancer symptoms. Twenty studies provided quantitative data. The majority of these studies suggest an association between increasing age and a shorter help-seeking interval. Ten studies found that increasing age was associated with shorter help-seeking interval,^{43,48,52,56,60,62,67–69,103} five studies found no association between age and help-seeking,^{50,51,55,66,101} and three studies found that increasing age was associated with a prolonged help-seeking interval.^{53,57,59} Two studies had mixed findings, highlighting factors that both shortened and prolonged

the appraisal interval.^{38,39} These data are summarised in Supplementary Table S1.

Analysis of the 28 qualitative studies^{70–94,99,101,102} highlighted three themes affecting patients' appraisal of possible cancer symptoms:

- symptom awareness;
- symptoms interpreted as old age; and
- symptoms interpreted as being caused by comorbidities.

The studies suggested that older adults were less aware of potential cancer symptoms resulting in patients not perceiving a need to present to an HCP. When a bodily change was detected, there were examples of patients explaining symptoms as part of the ageing process and as such did not perceive the bodily change as a reason to visit an HCP. Similarly, older adults with existing comorbidities tended to explain new bodily changes as being part of their existing medical problems, or as side effects of medication. This interpretation or normalisation of cancer symptoms resulted in patients not perceiving a need to consult with an HCP, and delaying diagnosis. Box 1 shows the themes from the qualitative

Box 1. Themes and illustrative quotes demonstrating the impact of age on the appraisal of symptoms, highlighting symptom awareness and interpretation

Theme	Sub-theme	Illustrative quotes
Symptom awareness	Studies suggested older adults are less aware of potential cancer symptoms	A man in the 65- to 69-years age group with a delayed diagnosis of colorectal cancer stated: <i>'I wasn't thinking of cancer, I'd never associated that sort of symptom with cancer.'</i> ⁷⁹ A 75-year-old man with prostate cancer who delayed help-seeking for 6 months stated: <i>'I would never have thought there's something wrong with the prostate, I didn't even know what the prostate was.'</i> ⁸² A 68-year-old man with persistent chest pain stated: <i>'I'd never heard anything about checking for lung cancer or that type of thing.'</i> ⁸³
Symptoms interpreted	Older adults tended to explain new symptoms as part of the ageing process	On discussing worsening breathlessness a patient stated: <i>'I was not able to walk as fast as I used to be able to, but I didn't think much about it. I am 72 I am going to begin to slow down.'</i> ⁷⁷ Another patient noticed a breast change and stated: <i>'I thought it was my age, sagging, shrinkage, you know, everything going south, as it were.'</i> ¹⁰¹ A patient eventually diagnosed with myeloma attributed multiple symptoms to the ageing process: <i>'It was a gradual process which I put down to old age, I had a bad back, but I was willing to accept that my back hurt a bit.'</i> ⁹⁰
Symptoms interpreted as being caused by comorbidities	Older adults tended to explain new symptoms as being a result of an existing comorbidity	A 69-year-old patient diagnosed with lung cancer states: <i>'... yeah, well I'm asthmatic, you have a tendency to cough more.'</i> ⁷⁶ A 73-year-old woman with colorectal cancer blamed her change in bowel habit on new cholesterol medication: <i>'... she [GP] changed me to simvastatin and it was a while after I got these sensations, I thought it is because I am taking these statins?'</i> ⁷⁶ As comorbidities and, as a result, medications increase with increasing age, this is more likely to affect older adults. A qualitative study of GP case reports of patients with lung cancer found a number of examples of comorbidities delaying diagnosis in older adults, including persistent coughing thought to be because of blood pressure medication and increased breathlessness thought to be because of heart failure. ⁹⁶

analysis and illustrative quotes supporting these findings.

Help-seeking interval

This review included 48 studies that considered the association between age and help-seeking for cancer symptoms. Eighteen provided quantitative data. The majority of these studies suggest an association between increasing age and a shorter help-seeking interval.^{43,48,52,56,60,62,67-69,103} five studies found no association between age and help-seeking,^{50,51,55,66,101} and only one found that increasing age was associated with a prolonged help-seeking interval.⁵⁹ Two studies had mixed findings highlighting multiple factors that could both shorten and prolong the help-seeking interval. For example, one study found older adults were statistically less likely to want to know they had cancer (which may delay help-seeking), but were also less likely to be 'put off' by perceived barriers to help-seeking (which may shorten help-seeking).^{58,64} These data

are summarised in Supplementary Table S2.

Four quantitative studies^{59,60,62,64} and 30 qualitative studies^{70-91,95-101,103} considered barriers to help-seeking for cancer symptoms among older adults. The studies highlighted and investigated several barriers to help-seeking that are listed below:

- the influence of family, carers, and friends (for example, older adults being encouraged to seek help by family or carers);
- competing priorities (for example, caring for unwell or frail spouses);
- fear (for example, fear of a cancer diagnosis or of investigations);
- the perceived role of the doctor in help-seeking (older adults perceiving 'the doctor' in a way that delayed help-seeking);
- comorbidities (conditions or diseases that tend to increase with advancing age); and
- self-management of symptoms (for

Box 2. Themes and illustrative quotes demonstrating the impact of age on patient help-seeking

Theme	Sub-theme	Illustrative quotes
The influence of family and carers	Family and carers encouraged older patients to seek help	A patient who was an ex-smoker in the 75- to 79-years age group and who had a persistent cough stated: <i>'My wife persuaded me to go to the doctor about it. I wasn't too worried about it.'</i> ⁷⁷ A patient in the 65- to 69-years age group with symptoms suggested of colorectal cancer reported that her daughter was 'on the bossy side' and had said to her 'don't leave it mam, go.' ⁷⁹
Competing priorities	Older adults reported delaying help-seeking as a result of competing priorities such as caregiving roles, or other life events	An older adult reported finding a breast lump but delayed seeking help because of her husband. She stated: <i>'... my husband went into hospital for a hip operation. I thought I'd wait until he came home.'</i> ¹⁰¹ A 69-year-old male with symptoms of lung cancer was due to go on holiday and as a result did not report his symptoms so as to not 'spoil the vacation'. ⁷⁵
Fear	Older adults reported that fear and embarrassment resulted in a delay in help-seeking for cancer symptoms	A 71-year-old patient described deferring help-seeking because of 'fear': <i>'I suppose deep down I didn't want to know anything else, you know, we're back to this thing that you know I think we are frightened, we do get frightened occasionally that ... there is something more serious and so if you can sort of, pretend that it's just a bad back, you're quite happy to just accept that.'</i> ⁹⁰ A patient in the 65- to 69-year age group reported the embarrassment of an intimate examination: <i>'it was just the embarrassment of knowing that I might have to have somebody's finger pushed up your bum for an examination ... that was probably the thing that put me off going more than anything in the first instance was the embarrassment of that sort of thing.'</i> ⁷⁹
The perceived role of the doctor in help-seeking	Older adults perceived 'the doctor' in a way that delayed help-seeking	An older patient reported: <i>'I'm not someone who goes to the doctor. I never used to trouble. If I had a cold I'd see to it myself. I didn't like the idea of going to be honest and I didn't want to go. When I did go she said "Oh you've not been here for so many years"'</i> ¹⁸ An older adult reported being embarrassed by seeing younger doctors: <i>'I was beginning to come to my senses and thought I'd better go the doctors, but I'm an embarrassed person, you know, showing yourself like that ... he's a young, good-looking doctor.'</i> ¹⁰¹
Comorbidities	As a result of comorbidities, patients expect new symptoms and do not seek help	A 67-year-old woman with unexplained weight loss also had comorbidities that resulted in frequent 'aches and pains'. As a result she reported only attending the doctor with serious symptoms: <i>'I have the arthritis, and I have so many aches here, there, and everywhere. And the GP, there's nothing he can do. I am already taking medications for that through the hospital, you know. So I don't bother the GP with all my symptoms every time, just what I think is pertinent.'</i> ¹⁰⁰
Self-management	Older adults described a preference for 'watchful waiting' or self-management that delayed help-seeking	A man in the 75- to 79-years age group described trying medication they could buy before seeking help: <i>'You do the usual, you take your Lemsip's and your Beechams Powders and when it doesn't clear up after a week you think well you need some antibiotics or something slightly stronger. So that was when I went to the doctors.'</i> ⁷⁷ A 71-year-old man with cancer symptoms stated: <i>'I believed that this sickness was a sign for me to get right with God. I put off my baptism for a long time now and I realized that was what I needed to do. So I went and get baptised.'</i> ⁷³

example, 'watchful waiting' or trying 'over-the-counter' or alternative treatments before visiting the GP).

These themes and supporting illustrative quotes are presented in Box 2.

The patient interval

A further 16 studies considered the association between increasing age and

both appraisal and help-seeking intervals combined; this is known as the patient interval. These studies do not suggest an association between increasing age and the patient interval. Seven studies found that increasing age was associated with a shorter patient interval,^{32,36,37,42,44,63,90} five found increasing age had no effect on the patient interval,^{25,30,31,47,49} and four studies suggested patient age was associated with

a longer patient interval.^{26,34,54,61} These data are summarised in Supplementary Table S3 while details of studies providing qualitative data are summarised in Supplementary Table S4.

DISCUSSION

Summary

Cancer is a disease of older adults with over half of new cancer diagnoses occurring in those >70 years of age. Decisions on the recognition and referral of cancer in older adults are difficult, with factors such as frailty and comorbidities meaning that management options are often limited. However, delayed presentation to primary care is likely to reduce the chance of curative treatment still further. If cancer symptoms are not recognised and help not sought, a large burden of potentially curable disease will be missed. As a result, this review has considered the effect of age on the presentation to primary care and the factors that affect this.

The findings of the review suggest an association between increasing age and a prolonged appraisal interval. As a result, the time from first noticing a bodily change to perceiving a need to seek help may be longer in older adults. In contrast, the review suggests an association between increasing age and a shortened help-seeking interval, with most studies suggesting older adults were more likely to seek help promptly when they detected symptoms that they perceived could be cancer. Despite this, the evidence highlighted several factors specific to older adults that could potentially delay help-seeking. Overall increasing age showed no association with the length of the patient interval.

Strengths and limitations

To the authors' knowledge, this is the first systematic review to investigate the association between increasing age and appraisal and help-seeking for cancer symptoms. This review includes 80 studies of good methodological quality and has been conducted in accordance with best-practice guidelines. Studies were included from a variety of countries and investigated a wide range of cancer types using both qualitative and quantitative methods.

This study, however, has some limitations. First, the heterogeneity of included studies precluded meta-analysis of quantitative data. Second, because of the observational nature of some of the included studies, it is unclear whether there is a causative link between older age and the factors highlighted. Finally, although

all the data analysed was from those aged ≥65 years, there was little comparison between younger and older adults. As a result, some of the factors identified may not be specific to older adults and may be equally relevant to a younger patient group. All patients may, for example, have competing priorities and may experience emotions such as fear and embarrassment. It is possible that there are differences in the competing priorities and emotions of older adults such as perhaps being more likely to have dependent partners. These differences would not be possible to identify without further work to compare findings in older and younger adults.

Although many of the included studies were clearly investigating appraisal or help-seeking intervals, there were studies in which it was more difficult to disentangle the two intervals. This is challenging and a recognised methodological issue when exploring the pathway to cancer diagnosis.

Comparison with existing literature

This review suggests an association between increasing age and prolonged symptom appraisal. The qualitative studies in this review suggested that a lack of cancer knowledge and normalising symptoms may contribute to this. Earlier studies support this finding, suggesting that older adults have lower cancer awareness measure scores¹⁰⁴ and lower health literacy.¹⁰⁵

Factors affecting help-seeking in this review were also highlighted in other studies. In one review older adults cited family and carer difficulties¹⁰⁶ as a barrier to seeking help for symptoms of dementia. A review on the impact of comorbidities on cancer diagnosis found that comorbidities could be associated with both prolonged and shortened time to diagnosis,¹⁰⁷ supporting the finding of this review. Fear was a prominent theme in a review considering help-seeking for cancer symptoms in all age groups.¹⁰⁸ A systematic review considering the risk factors for delayed presentation of cancers found evidence of delay in older patients with breast cancer and reported that fear of cancer contributed to this delayed presentation.⁵

Studies have considered factors affecting appraisal and help-seeking in the general population. One study found that symptom knowledge and correct symptom interpretation improved the appraisal interval in the general population, supporting the findings of this study.¹⁰⁹ Whitaker *et al* reported similar factors to this review, in their study on adults aged ≥50 years but also report others such as

lack of confidence in the healthcare system and the importance of 'instinct' or gut feeling that were not found in this current review.⁶

Implications for research and practice

This review suggests that increasing age is associated with prolonged appraisal of cancer symptoms and a shortened time to seek help. Symptom appraisal in older adults is complex, with multiple issues such as a possible lack of awareness of cancer symptoms, the attribution of symptoms to ageing, and the presence of other comorbidities. Further research needs to investigate the best approaches to improve symptom appraisal in older adults. It is possible that cancer awareness campaigns, such as the UK's 'Be Clear on Cancer'¹¹⁰ and the US Centers for Disease Control's 'Inside Knowledge',¹¹¹ may improve awareness; however, subsequent cancer awareness campaigns should be designed to ensure they reach an older population through more targeted advertising or through other means such as cancer champions in day centres for older people or care homes.

The challenge of distinguishing symptoms that may be because of cancer from normal signs of ageing and symptoms of comorbidities is complex and difficult. In primary care, older adults are more likely to have contact with primary care because of the higher burden of comorbidities in this population. It is possible that annual reviews of other chronic conditions may allow an opportunity for HCPs and patients to recognise and discuss cancer symptoms. Posters or literature in waiting rooms could also support older adults to recognise cancer symptoms. When patients are diagnosed with chronic conditions there is an opportunity to discuss and advise patients about expected symptoms and their duration, and symptoms that should prompt concern.

Although increasing age was possibly associated with a shortened help-seeking interval, this review highlighted potential barriers to help-seeking in older adults. Future research could be targeted at interventions to reduce the impact of these barriers. Healthcare practitioners and policymakers may be able to implement changes to encourage patients with cancer symptoms to present promptly. For example, this current review found that a

dislike of visiting GPs and a fear of wasting doctors' time may delay help-seeking. Local or national campaigns could seek to legitimise help-seeking in older adults. This may include public health information that symptoms should not be normalised or attributed to age, on the expected time course or length of symptoms, and the need to return if symptoms persist. In light of the COVID-19 pandemic and the changes this has made to general practice, public information targeted at older adults on the safety of attending general practice, the availability of GPs, and how best to access care may be helpful.

The management of fatalistic attitudes is difficult, but incorporating information about the curability of early-stage cancers in public education campaigns may improve help-seeking.⁵⁹ Although self-management is encouraged by policymakers, the current review suggests an unintended consequence of this self-management may be delayed presentation with symptoms. Pharmacists and dispensaries could be well placed to recognise potentially harmful self-management of certain red-flag symptoms (such as the use of antacid medication for dyspepsia) and are encouraged to promote help-seeking; however, there are no formal referral pathways for community pharmacists to refer patients to primary care or any mechanism for them to ensure help-seeking has taken place.¹¹² Further research is needed and future public health self-management messages may need to take this into account, especially in older adults with potential red-flag symptoms. Finally, the role of family and carers was highlighted in this current review; increasing social isolation in older people is well documented but the effect of this on cancer diagnosis is unknown and is a key area of future research.

With increasing age comes an increasing risk of other factors such as frailty syndromes, comorbidities, and cognitive impairment that may confound the results of this review. It is possible that these factors may play a significant role in the appraisal and help-seeking related to cancer symptoms and are as or more important than age alone. Future research should try to disentangle this, and explore the effect that comorbidities, frailty, and cognitive impairment have on cancer diagnosis.

Funding

This research is linked to the CanTest Collaborative, which is funded by Cancer Research UK (reference: C8640/A23385), of which Richard Neal is an associate director and Erica Di Martino, Stephen H Bradley, and Cristina Renzi are research fellows.

Ethical approval

Not applicable.

Data

The full search strategy and all data are available in the supplementary material.

Provenance

Freely submitted; externally peer reviewed.

Competing interests

The authors have declared no competing interests.

Open access

This article is Open Access: CC BY 4.0 licence (<http://creativecommons.org/licenses/by/4.0/>).

Discuss this article

Contribute and read comments about this article: bjgp.org/letters

REFERENCES

1. GBD 2019 Diseases and Injuries Collaborators. Global burden of 369 diseases and injuries in 204 countries and territories, 1990–2019: a systematic analysis for the Global Burden of Disease Study 2019. *Lancet* 2020; **396**(10258): 1204–1222.
2. Cancer Research UK. *Cancer statistics for the UK*. 2020. <https://www.cancerresearchuk.org/health-professional/cancer-statistics-for-the-uk> [accessed 14 Jun 2022].
3. Neal RD, Tharmanathan P, France B, *et al*. Is increased time to diagnosis and treatment in symptomatic cancer associated with poorer outcomes? Systematic review. *Br J Cancer* 2015; **112**(S1): S92–S107.
4. Mendonca SC, Abel GA, Saunders CL, *et al*. Pre-referral general practitioner consultations and subsequent experience of cancer care: evidence from the English Cancer Patient Experience Survey. *Eur J Cancer Care* 2016; **25**(3): 478–490.
5. Macleod U, Mitchell ED, Burgess C, *et al*. Risk factors for delayed presentation and referral of symptomatic cancer: evidence for common cancers. *Br J Cancer* 2009; **101**(Suppl 2): S92–S101.
6. Whitaker KL, Macleod U, Winstanley K, *et al*. Help seeking for cancer ‘alarm’ symptoms: a qualitative interview study of primary care patients in the UK. *Br J Gen Pract* 2015; DOI: <https://doi.org/10.3399/bjgp15X683533>.
7. Renzi C, Lyratzopoulos G. Comorbidity and the diagnosis of symptomatic-but-as-yet-undiagnosed cancer. *Br J Gen Pract* 2020; DOI: <https://doi.org/10.3399/bjgp20X712193>.
8. Chicoulaa B, Balardy L, Stillmunkes A, *et al*. French general practitioners’ sense of isolation in the management of elderly cancer patients. *Fam Pract* 2016; **33**(5): 551–556.
9. Page MJ, McKenzie JE, Bossuyt PM, *et al*. The PRISMA 2020 statement: an updated guideline for reporting systematic reviews. *BMJ* 2021; **372**: n71.
10. World Health Organization. *Proposed working definition of an older person in Africa for the MDS project*. Geneva: WHO, 2002.
11. Weller D, Vedsted P, Rubin G, *et al*. The Aarhus statement: improving design and reporting of studies on early cancer diagnosis. *Br J Cancer* 2012; **106**(7): 1262–1267.
12. National Institute for Health and Care Excellence. *Suspected cancer: recognition and referral*. London: NICE, 2015. <https://www.nice.org.uk/guidance/ng12> [accessed 14 Jun 2022].
13. Puts MT, Tapscott B, Fitch M, *et al*. A systematic review of factors influencing older adults’ decision to accept or decline cancer treatment. *Cancer Treat Rev* 2015; **41**(2): 197–215.
14. Cancer and Primary Care Research International Network. *Cancer and primary care research international network conferences*. 2021. <https://www.ed.ac.uk/usher/cancer-primary-care-research-international-network/conferences>. [accessed 14 Jun 2022].
15. National Cancer Research Institute. *National Cancer Research Institute cancer conference*. 2021. <https://conference.ncri.org.uk/> [accessed 14 Jun 2022].
16. Macmillan Cancer Support. About us. Cancer experience. 2022. <https://www.macmillan.org.uk/about-us/what-we-do/research/cancer-experience> [accessed 10 August 2022].
17. Cancer Research UK. *Early diagnosis research conferences*. 2021. <https://www.cancerresearchuk.org/health-professional/diagnosis/early-diagnosis-initiative/early-diagnosis-research-conferences> [accessed 14 June 2022].
18. Hong QN, Gonzalez-Reyes A, Pluye P. Improving the usefulness of a tool for appraising the quality of qualitative, quantitative and mixed methods studies, the Mixed Methods Appraisal Tool (MMAT). *J Eval Clin Pract* 2018; **24**(3): 459–467.
19. Hong QN, Pluye P, Fabregues S, *et al*. Improving the content validity of the mixed methods appraisal tool: a modified e-Delphi study. *J Clin Epidemiol* 2019; **111**: 49–59e1.
20. Thomas J, Harden A. Methods for the thematic synthesis of qualitative research in systematic reviews. *BMC Med Res Methodol* 2008; **8**: 45.
21. Tong A, Flemming K, McInnes E, *et al*. Enhancing transparency in reporting the synthesis of qualitative research: ENTREQ. *BMC Med Res Methodol* 2012; **12**: 181.
22. Campbell M, McKenzie JE, Sowden A, *et al*. Synthesis without meta-analysis (SWiM) in systematic reviews: reporting guideline. *BMJ* 2020; **368**: 16890.
23. Thomas J, Harden A, Oakley A, *et al*. Integrating qualitative research with trials in systematic reviews. *BMJ* 2004; **328**(7446): 1010–1012.
24. Adelstein BA, Macaskill P, Turner RM, Irwig L. Patients who take their symptoms less seriously are more likely to have colorectal cancer. *BMC Gastroenterol* 2012; **12**: 130.
25. Allgar VL, Oliver SE, Chen H, *et al*. Time intervals from first symptom to diagnosis for head and neck cancers: an analysis of linked patient reports and medical records from the UK. *Cancer Epidemiol* 2019; **59**: 37–45.
26. Arndt V, Sturmer T, Stegmaier C, *et al*. Patient delay and stage of diagnosis among breast cancer patients in Germany — a population based study. *Br J Cancer* 2002; **86**(7): 1034–1040.
27. Arnold-Reed DE, Hince DA, Bulsara MK, *et al*. Knowledge and attitudes of men about prostate cancer. *Med J Aust* 2008; **189**(6): 312–314.
28. Brain KE, Smits S, Simon AE, *et al*. Ovarian cancer symptom awareness and anticipated delayed presentation in a population sample. *BMC Cancer* 2014; **14**: 171.
29. Brunswick N, Wardle J, Jarvis MJ. Public awareness of warning signs for cancer in Britain. *Cancer Causes Control* 2001; **12**(1): 33–37.
30. Esteva M, Leiva A, Ramos M, *et al*. Factors related with symptom duration until diagnosis and treatment of symptomatic colorectal cancer. *BMC Cancer* 2013; **13**: 87.
31. Forbes LJ, Warburton F, Richards MA, Ramirez AJ. Risk factors for delay in symptomatic presentation: a survey of cancer patients. *Br J Cancer* 2014; **111**(3): 581–588.
32. Hansen RP, Olesen F, Sorensen HT, *et al*. Socioeconomic patient characteristics predict delay in cancer diagnosis: a Danish cohort study. *BMC Health Serv Res* 2008; **8**: 49.
33. Hvidberg L, Pedersen AF, Wulff CN, Vedsted P. Cancer awareness and socio-economic position: results from a population-based study in Denmark. *BMC Cancer* 2014; **14**: 13.
34. Innos K, Padrik P, Valvere V, *et al*. Identifying women at risk for delayed presentation of breast cancer: a cross-sectional study in Estonia. *BMC Public Health* 2013; **13**: 947.
35. Jensen LF, Hvidberg L, Pedersen AF, Vedsted P. Symptom attributions in patients with colorectal cancer. *BMC Fam Pract* 2015; **16**: 115.
36. Keeble S, Abel GA, Saunders CL, *et al*. Variation in promptness of presentation among 10,297 patients subsequently diagnosed with one of 18 cancers: evidence from a National Audit of Cancer Diagnosis in Primary Care. *Int J Cancer* 2014; **135**(5): 1220–1228.
37. Korsgaard M, Pedersen L, Laurberg S. Delay of diagnosis and treatment of colorectal cancer — a population-based Danish study. *Cancer Detect Prev* 2008; **32**(1): 45–51.
38. Linsell L, Burgess CC, Ramirez AJ. Breast cancer awareness among older women. *Br J Cancer* 2008; **99**(8): 1221–1225.
39. McCaffery K, Wardle J, Waller J. Knowledge, attitudes, and behavioral intentions in relation to the early detection of colorectal cancer in the United Kingdom. *Prev Med* 2003; **36**(5): 525–535.
40. Moffat J, Bentley A, Ironmonger L, *et al*. The impact of national cancer awareness campaigns for bowel and lung cancer symptoms on sociodemographic inequalities in immediate key symptom awareness and GP attendances. *Br J Cancer* 2015; **112**(Suppl 1): S14–S21.
41. Moser K, Patnick J, Beral V. Do women know that the risk of breast cancer increases with age? *Br J Gen Pract* 2007; **57**(538): 404–406.
42. Neal RD, Allgar VL. Sociodemographic factors and delays in the diagnosis of six cancers: analysis of data from the ‘National Survey of NHS Patients: Cancer’. *Br J Cancer* 2005; **92**(11): 1971–1975.
43. Rendle KA, Sarma EA, Quaipe SL, *et al*. Cancer symptom recognition and anticipated delays in seeking care among U.S. adults. *Am J Prev Med* 2019; **57**(1): e1–e9.
44. Richard MA, Grob JJ, Avril MF, *et al*. Delays in diagnosis and melanoma prognosis (I): the role of patients. *Int J Cancer* 2000; **89**(3): 271–279.
45. Robb K, Stubbings S, Ramirez A, *et al*. Public awareness of cancer in Britain: a population-based survey of adults. *Br J Cancer* 2009; **101**: S18–S23.
46. Sarma EA, Rendle KA, Kobrin SC. Cancer symptom awareness in the US: sociodemographic differences in a population-based survey of adults. *Prev Med* 2020; **132**: 106005.
47. Skeppner E, Andersson SO, Johansson JE, Windahl T. Initial symptoms and delay in patients with penile carcinoma. *Scan J Urol Neph* 2012; **46**(5): 319–325.
48. Sladden MJ, Hughes AM, Hirst GH, Ward JE. A community study of lower urinary tract symptoms in older men in Sydney, Australia. *ANZ J Surg* 2000; **70**(5): 322–328.

49. Van Hout AM, de Wit NJ, Rutten FH, Peeters PH. Determinants of patient's and doctor's delay in diagnosis and treatment of colorectal cancer. *Eur J Gastroenterol Hepatol* 2011; **23(11)**: 1056–1063.
50. Brouha XD, Tromp DM, Hordijk GJ, *et al*. Oral and pharyngeal cancer: analysis of patient delay at different tumor stages. *Head Neck* 2005; **27(11)**: 939–945.
51. Davies H, Marcu A, Vedsted P, Whitaker KL. Is lower symptom recognition associated with socioeconomic inequalities in help-seeking for potential breast cancer symptoms? *Psycho Oncol* 2018; **27(2)**: 626–632.
52. Elnegaard S, Pedersen AF, Sand Andersen R, *et al*. What triggers healthcare-seeking behaviour when experiencing a symptom? Results from a population-based survey. *BJGP Open* 2017; <https://doi.org/10.3399/bjgpopen17X100761>.
53. Friese CR, Abel GA, Magazu LS, *et al*. Diagnostic delay and complications for older adults with multiple myeloma. *Leuk Lymphoma* 2009; **50(3)**: 392–400.
54. Friese CR, Earle CC, Magazu LS, *et al*. Timeliness and quality of diagnostic care for medicare recipients with chronic lymphocytic leukemia. *Cancer* 2011; **117(7)**: 1470–1477.
55. Grunfeld EA, Hunter MS, Ramirez AJ, Richards MA. Perceptions of breast cancer across the lifespan. *J Psychosom Res* 2003; **54(2)**: 141–146.
56. Hannaford PC, Thornton AJ, Murchie P, *et al*. Patterns of symptoms possibly indicative of cancer and associated help-seeking behaviour in a large sample of United Kingdom residents — the USEFUL study. *PLoS One* 2020; **15(1)**: e0228033.
57. Howell DA, Smith AG, Jack A, *et al*. Time-to-diagnosis and symptoms of myeloma, lymphomas and leukaemias: a report from the Haematological Malignancy Research Network. *BMC Hematology* 2013; **13(1)**: 9.
58. Hvidberg L, Wulff CN, Pedersen AF, Vedsted P. Barriers to healthcare seeking, beliefs about cancer and the role of socio-economic position. A Danish population-based study. *Prev Med* 2015; **71**: 107–113.
59. Lyratzopoulos G, Liu MP-H, Abel GA, *et al*. The association between fatalistic beliefs and late stage at diagnosis of lung and colorectal cancer. *Cancer Epidemiol* 2015; **24(4)**: 720–726.
60. Moffat J, Hinchliffe R, Ironmonger L, Osborne K. Identifying anticipated barriers to help-seeking to promote earlier diagnosis of cancer in Great Britain. *Public Health* 2016; **141**: 120–125.
61. Mikulin T, Hardcastle JD. Gastric cancer — delay in diagnosis and its causes. *Eur J Cancer Clin Oncol* 1987; **23(11)**: 1683–1690.
62. Niksic M, Rachet B, Warburton FG, Forbes LJ. Ethnic differences in cancer symptom awareness and barriers to seeking medical help in England. *Br J Cancer* 2016; **115(1)**: 136–144.
63. Pedersen AF, Forbes L, Brain K, *et al*. Negative cancer beliefs, recognition of cancer symptoms and anticipated time to help-seeking: an international cancer benchmarking partnership (ICBP) study. *BMC Cancer* 2018; **18(1)**: 363.
64. Quaife SL, Forbes LJ, Ramirez AJ, *et al*. Recognition of cancer warning signs and anticipated delay in help-seeking in a population sample of adults in the UK. *Br J Cancer* 2014; **110(1)**: 12–18.
65. Samet JM, Hunt WC, Lerchen ML, *et al*. Delay in seeking care for cancer symptoms: a population-based study of elderly New Mexicans. *J Natl Cancer Inst* 1988; **80(6)**: 432–438.
66. Sarma AV, Wallner L, Jacobsen SJ, *et al*. Health seeking behavior for lower urinary tract symptoms in black men. *J Urol* 2008; **180(1)**: 227–232.
67. Sele LM, Elnegaard S, Balasubramaniam K, *et al*. Lifestyle factors and contact to general practice with respiratory alarm symptoms — a population-based study. *BMC Fam Pract* 2016; **17**: 47.
68. Svendsen RP, Jarbol DE, Larsen PV, *et al*. Associations between health care seeking and socioeconomic and demographic determinants among people reporting alarm symptoms of cancer: a population-based cross-sectional study. *Fam Pract* 2013; **30(6)**: 655–665.
69. Kaushal A, Waller J, von Wagner C, *et al*. The role of chronic conditions in influencing symptom attribution and anticipated help-seeking for potential lung cancer symptoms: a vignette-based study. *BJGP Open* 2020; DOI: 10.3399/bjgpopen20X101086.
70. Evans J, Chapple A, Salisbury H, *et al*. 'It can't be very important because it comes and goes' — patients' accounts of intermittent symptoms preceding a pancreatic cancer diagnosis: a qualitative study. *BMJ Open* 2014; **4(2)**: e004215.
71. Seibaek L, Petersen LK, Blaakaer J, Hounsgaard L. Symptom interpretation and health care seeking in ovarian cancer. *BMC Women's Health* 2011; **11**: 31.
72. Scott SE, Grunfeld EA, Auyeung V, McGurk M. Barriers and triggers to seeking help for potentially malignant oral symptoms: implications for interventions. *J Public Health Dent* 2009; **69(1)**: 34–40.
73. Walter FM, Birt L, Cavers D, *et al*. 'This isn't what mine looked like': a qualitative study of symptom appraisal and help seeking in people recently diagnosed with melanoma. *BMJ Open* 2014; **4(7)**: e005566.
74. Topping A, Nkosana-Nyawata I, Heyman B. 'I am not someone who gets skin cancer': risk, time and malignant melanoma. *Health Risk Soc* 2013; **15(6)**: 596–614.
75. Andersen RS, Paarup B, Vedsted P, *et al*. 'Containment' as an analytical framework for understanding patient delay: a qualitative study of cancer patients' symptom interpretation processes. *Soc Sci Med* 2010; **71(2)**: 378–385.
76. McLachlan S, Mansell G, Sanders T, *et al*. Symptom perceptions and help-seeking behaviour prior to lung and colorectal cancer diagnoses: a qualitative study. *Fam Pract* 2015; **32(5)**: 568–577.
77. Birt L, Hall N, Emery J, *et al*. Responding to symptoms suggestive of lung cancer: a qualitative interview study. *BMJ Open*. 2014; **1**: e000067.
78. Rankin NM, York S, Stone E, *et al*. Pathways to lung cancer diagnosis: a qualitative study of patients and general practitioners about diagnostic and pretreatment intervals. *Ann Am Thorac Soc* 2017; **14(5)**: 742–753.
79. Hall N, Birt L, Banks J, *et al*. Symptom appraisal and healthcare-seeking for symptoms suggestive of colorectal cancer: a qualitative study. *BMJ Open* 2015; **5**: e008448.
80. Samuelsson KS, Egenvall M, Klarin I, *et al*. The older patient's experience of the healthcare chain and information when undergoing colorectal cancer surgery according to the enhanced recovery after surgery concept. *J Clin Nurs* 2018; **27(7–8)**: e1580–e8.
81. Oberoi DV, Jiwa M, McManus A, Parsons R. Do men know which lower bowel symptoms warrant medical attention? A web-based video vignette survey of men in Western Australia. *Am J Mens Health* 2016; **10(6)**: 474–486.
82. McCutchan G, Wood F, Smits S, *et al*. Barriers to cancer symptom presentation among people from low socioeconomic groups: a qualitative study. *BMC Public Health* 2016; **16(1)**: 1052.
83. Tod AM, Craven J, Allmark P. Diagnostic delay in lung cancer: a qualitative study. *J Adv Nurs* 2008; **61(3)**: 336–343.
84. Ramos M, Arranz M, Taltavull M, *et al*. Factors triggering medical consultation for symptoms of colorectal cancer and perceptions surrounding diagnosis. *Eur J Cancer Care* 2010; **19(2)**: 192–199.
85. van Schalkwyk SL, Maree JE, Wright SC. Cervical cancer: the route from signs and symptoms to treatment in South Africa. *Reprod Health Matters* 2008; **16(32)**: 9–17.
86. Parsonage RK, Hiscock J, Law RJ, Neal RD. Patient perspectives on delays in diagnosis and treatment of cancer: a qualitative analysis of free-text data. *Br J Gen Pract* 2017; DOI: <https://doi.org/10.3399/bjgp16X688357>.
87. Salander P, Bergenheim AT, Hamberg K, Henriksson R. Pathways from symptoms to medical care: a descriptive study of symptom development and obstacles to early diagnosis in brain tumour patients. *Fam Pract* 1999; **16(2)**: 143–148.
88. Broughton M, Bailey J, Linney J. How can experiences of patients and carers influence the clinical care of large bowel cancer? *Eur J Cancer Care* 2004; **13(4)**: 318–327.
89. Leydon GM, Bynoe-Sutherland J, Coleman MP. The journey towards a cancer diagnosis: the experiences of people with cancer, their family and carers. *Eur J Cancer Care* 2003; **12(4)**: 317–326.
90. Howell DA, Hart RI, Smith AG, *et al*. Myeloma: patient accounts of their pathways to diagnosis. *PLoS One* 2018; **13(4)**: e0194788.
91. Cunningham-Burley S, Allbutt H, Garraway WM, *et al*. Perceptions of urinary symptoms and health-care-seeking behaviour amongst men aged 40–79 years. *Br J Gen Pract* 1996; **46(407)**: 349–352.
92. Kannan A, Kirkman M, Ruseckaite R, Evans SM. Prostate cancer awareness, case-finding, and early diagnosis: interviews with undiagnosed men in Australia. *PLoS One* 2019; **14(3)**: e0211539.
93. King-Okoye M, Arber A, Faithfull S. Beliefs that contribute to delays in diagnosis of prostate cancer among Afro-Caribbean men in Trinidad and Tobago. *Psycho Oncol* 2019; **28(6)**: 1321–1327.
94. Taib NA, Yip CH, Low WY. Recognising symptoms of breast cancer as a reason for delayed presentation in Asian women — the psycho-socio-cultural model for breast symptom appraisal: opportunities for intervention. *Asian Pac J Can Prev* 2011; **12(6)**: 1601–1608.
95. Lammers HA, van Wijnhoven R, Teunissen TA, *et al*. Why do men suffering from LUTS seek primary medical care? A qualitative study. *J Eval Clin Pract* 2015; **21(5)**: 931–936.

96. Mitchell ED, Rubin G, Macleod U. Understanding diagnosis of lung cancer in primary care: qualitative synthesis of significant event audit reports. *Br J Gen Pract* 2013; <https://doi.org/10.3399/bjgp13X660760>.
97. MacLean A, Hunt K, Smith S, Wyke S. Does gender matter? An analysis of men's and women's accounts of responding to symptoms of lung cancer. *Soc Sci Med* 2017; **191**: 134–142.
98. Tookey S, Renzi C, Waller J, *et al*. Using the candidacy framework to understand how doctor–patient interactions influence perceived eligibility to seek help for cancer alarm symptoms: a qualitative interview study. *BMC Health Serv Res* 2018; **18(1)**: 937.
99. Renzi C, Whitaker KL, Winstanley K, *et al*. Unintended consequences of an 'all-clear' diagnosis for potential cancer symptoms: a nested qualitative interview study with primary care patients. *Br J Gen Pract* 2016; DOI: <https://doi.org/10.3399/bjgp16X683845>.
100. Cromme SK, Whitaker KL, Winstanley K, *et al*. Worrying about wasting GP time as a barrier to help-seeking: a community-based, qualitative study. *Br J Gen Pract* 2016; <https://doi.org/10.3399/bjgp16X685621>.
101. Burgess CC, Potts HW, Hamed H, *et al*. Why do older women delay presentation with breast cancer symptoms? *Psycho Oncol* 2006; **15(11)**: 962–968.
102. Grunfeld EA, Ramirez AJ, Hunter MS, Richards MA. Women's knowledge and beliefs regarding breast cancer. *Br J Cancer* 2002; **86(9)**: 1373–1378.
103. Wagland R, Brindle L, Ewings S, *et al*. Promoting help-seeking in response to symptoms amongst primary care patients at high risk of lung cancer: a mixed method study. *PLoS One* 2016; **11(11)**: e0165677.
104. Whitaker KL, Scott SE, Wardle J. Applying symptom appraisal models to understand sociodemographic differences in responses to possible cancer symptoms: a research agenda. *Br J Cancer* 2015; **112(S1)**: S27–S34.
105. von Wagner C, Knight K, Steptoe A, Wardle J. Functional health literacy and health-promoting behaviour in a national sample of British adults. *J Epidemiol Community Health* 2007; **61(12)**: 1086–1090.
106. Parker M, Barlow S, Hoe J, Aitken L. Persistent barriers and facilitators to seeking help for a dementia diagnosis: a systematic review of 30 years of the perspectives of carers and people with dementia. *Int Psychogeriatr* 2020; DOI: [10.1017/S1041610219002229](https://doi.org/10.1017/S1041610219002229).
107. Renzi C, Kaushal A, Emery J, *et al*. Comorbid chronic diseases and cancer diagnosis: disease-specific effects and underlying mechanisms. *Nat Rev Clin Oncol* 2019; **16(12)**: 746–761.
108. Smith LK, Pope C, Botha JL. Patients' help-seeking experiences and delay in cancer presentation: a qualitative synthesis. *Lancet* 2005; **366(9488)**: 825–831.
109. Petrova D, Okan Y, Salamanca-Fernández E, *et al*. Psychological factors related to time to help-seeking for cancer symptoms: a meta-analysis across cancer sites. *Health Psychol Rev* 2019; **14(2)**: 245–268.
110. Lai J, Mak V, Bright CJ, *et al*. Reviewing the impact of 11 national Be Clear on Cancer public awareness campaigns, England, 2012 to 2016: a synthesis of published evaluation results. *Int J Cancer* 2020; **148(5)**: 1172–1182.
111. Puckett M, Townsend J, Patterson JR, *et al*. Using inside knowledge campaign materials to improve gynecologic cancer knowledge in underserved women. *J Womens Health* 2019; **28(9)**: 1185–1192.
112. Konya J, Neal RD, Clark CE, *et al*. Can early cancer detection be improved in deprived areas by involving community pharmacists? *Br J Gen Pract* 2022; DOI: <https://doi.org/10.3399/bjgp22X718865>.